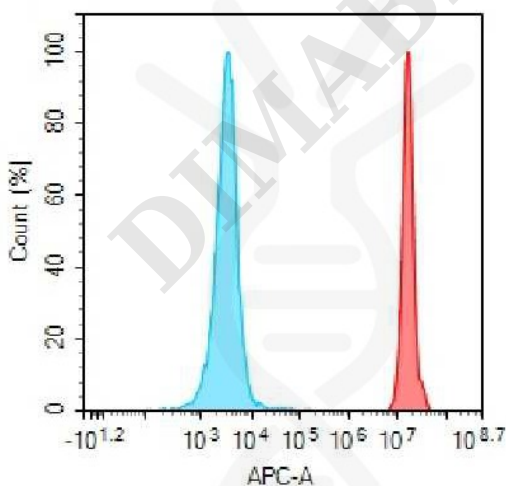


PRODUCT INFORMATION

Target	CD10
Description	Monoclonal Cell Line Derived from CHO-S Cells, Engineered for Stable Expression of Human CD10 Using Lentiviral Technology
Host Cells	CHO-S
Uniprot ID	P08473
Applications	FACS Data
Growth media	DMEM+10% FBS+1% P.S+Gln+2 ug/mL Puromycin
Package	5E6 Cells/mL
Host Species	Human
Suggested Control	SKU: DME100176
Warranty and Disclaimer	1. Please inspect cells upon receipt and report any issues promptly. 2. We offer one-time replacements for issues reported within a week of receipt. 3. User-induced issues are not eligible for free replacements. 4. We do not accept liability for damages resulting from cell use, storage, or loss. 5. Feedback received more than one month after receipt will not be processed.
Storage&Shipping	Cells are shipped using dry ice and require liquid nitrogen storage for long term preservation.
Synonyms	MME;CALLA;CD10;DKFZp686O16152;MGC126681;MGC126707;NEP;SFE;Neprilysin
Background	The protein encoded by this gene is a type II transmembrane glycoprotein and a common acute lymphocytic leukemia antigen that is an important cell surface marker in the diagnosis of human acute lymphocytic leukemia (ALL). The encoded protein is present on leukemic cells of pre-B phenotype; which represent 85% of cases of ALL. This protein is not restricted to leukemic cells; however, and is found on a variety of normal tissues. The protein is a neutral endopeptidase that cleaves peptides at the amino side of hydrophobic residues and inactivates several peptide hormones including glucagon; enkephalins; substance P; neurotensin; oxytocin; and bradykinin.
Usage	For research use only.

Hu_CD10 CHO-S Cell Line



■ Rabbit IgG
■ Anti-CD10 antibody(DM176);
 Rabbit mAb (SKU: DME100176)

Figure 1. Flow cytometry analysis of human CD10 overexpression using Hu_CD10 CHO-S Cell Line (Cat. No. CEL100072) and Anti-CD10 antibody(DM176)Rabbit mAb (Cat. No. DME100176)



DIMABIO CONFIDENTIAL

