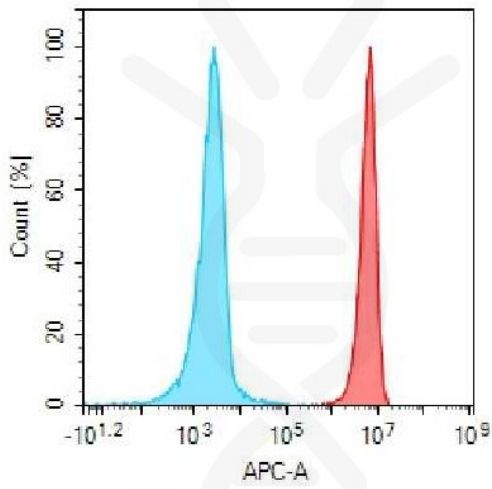


**PRODUCT INFORMATION**

<b>Target</b>	CD28
<b>Description</b>	Monoclonal Cell Line Derived from K562 Cells, Engineered for Stable Expression of Human CD28 Using Lentiviral Technology
<b>Host Cells</b>	K562
<b>Uniprot ID</b>	P10747
<b>Applications</b>	FACS Data
<b>Growth media</b>	RPMI-1640+10% FBS+1% P.S+1% Gln+2 ug/mL Puromycin
<b>Package</b>	5E6 Cells/mL
<b>Host Species</b>	Human
<b>Suggested Control</b>	SKU: DME100063 1. Please inspect cells upon receipt and report any issues promptly. 2. We offer one-time replacements for issues reported within a week of receipt. 3. User-induced issues are not eligible for free replacements. 4. We do not accept liability for damages resulting from cell use, storage, or loss. 5. Feedback received more than one month after receipt will not be processed.
<b>Warranty and Disclaimer</b>	
<b>Storage&amp;Shipping</b>	Cells are shipped using dry ice and require liquid nitrogen storage for long term preservation.
<b>Synonyms</b>	CD28; Tp44
<b>Background</b>	The protein encoded by this gene is essential for T-cell proliferation and survival; cytokine production; and T-helper type-2 development. Several alternatively spliced transcript variants encoding different isoforms have been found for this gene.
<b>Usage</b>	For research use only.



### Hu\_CD28 K562 Cell Line





-  Rabbit IgG
-  Anti-CD28 antibody(DM63);  
Rabbit mAb (SKU: DME100063)

Figure 1. Flow cytometry analysis of human CD28 overexpression using Hu\_CD28 K562 Cell Line (Cat. No. CEL100041) and Anti-CD28 antibody(DM63)Rabbit mAb (Cat. No. DME100063)

