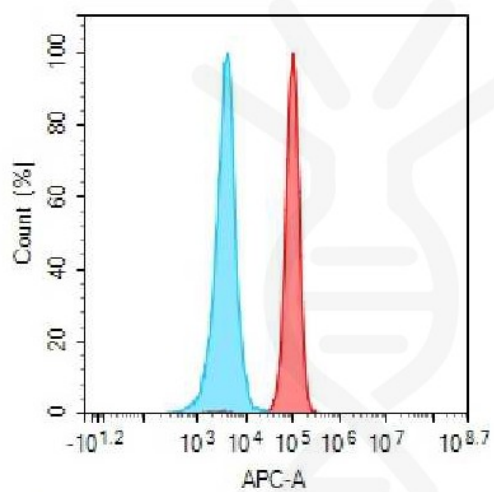


**PRODUCT INFORMATION**

<b>Target</b>	DLL3
<b>Description</b>	Monoclonal Cell Line Derived from CHO-S Cells, Engineered for Stable Expression of Human DLL3 Using Lentiviral Technology
<b>Host Cells</b>	CHO-S
<b>Uniprot ID</b>	Q9NYJ7
<b>Applications</b>	FACS Data
<b>Growth media</b>	DMEM+10% FBS+1% P.S+Gln+2 ug/mL Puromycin
<b>Package</b>	5E6 Cells/mL
<b>Host Species</b>	Human
<b>Suggested Control</b>	SKU: BME100068
<b>Warranty and Disclaimer</b>	1. Please inspect cells upon receipt and report any issues promptly. 2. We offer one-time replacements for issues reported within a week of receipt. 3. User-induced issues are not eligible for free replacements. 4. We do not accept liability for damages resulting from cell use, storage, or loss. 5. Feedback received more than one month after receipt will not be processed.
<b>Storage&amp;Shipping</b>	Cells are shipped using dry ice and require liquid nitrogen storage for long term preservation.
<b>Synonyms</b>	SCDO1
<b>Background</b>	This gene encodes a member of the delta protein ligand family. This family functions as Notch ligands that are characterized by a DSL domain, EGF repeats, and a transmembrane domain. Mutations in this gene cause autosomal recessive spondylocostal dysostosis 1. Two transcript variants encoding distinct isoforms have been identified for this gene. [provided by RefSeq, Jul 2008]
<b>Usage</b>	For research use only.



## Hu\_DLL3 CHO-S Cell Line



-  Human IgG
-  Anti-DLL3(Rovalpituzumab biosimilar) mAb (SKU: BME100068)

Figure 1. Flow cytometry analysis of human DLL3 overexpression using Hu\_DLL3 CHO-S Cell Line (Cat. No. CEL100038) and Anti-DLL3(Rovalpituzumab biosimilar) mAb (Cat. No. BME100068)

DIMABIO CONFIDENTIAL

