

PRODUCT INFORMATION

| | |
|--------------------------------|---|
| Target | EGFR VIII |
| Description | Monoclonal Cell Line Derived from K562 Cells, Engineered for Stable Expression of Human EGFR VIII Using Lentiviral Technology |
| Host Cells | K562 |
| Uniprot ID | P00533 |
| Applications | FACS Data |
| Growth media | RPMI-1640+10% FBS+1% P.S+1% Gln+2 ug/mL Puromycin |
| Package | 5E6 Cells/mL |
| Host Species | Human |
| Suggested Control | SKU: DMC101040 |
| Warranty and Disclaimer | 1. Please inspect cells upon receipt and report any issues promptly. 2. We offer one-time replacements for issues reported within a week of receipt. 3. User-induced issues are not eligible for free replacements. 4. We do not accept liability for damages resulting from cell use, storage, or loss. 5. Feedback received more than one month after receipt will not be processed. |
| Storage&Shipping | Cells are shipped using dry ice and require liquid nitrogen storage for long term preservation. |
| Synonyms | EGFR;RBB;RBB1;ER1;IG61;ENA |
| Background | The protein encoded by this gene is a transmembrane glycoprotein that is a member of the protein kinase superfamily. This protein is a receptor for members of the epidermal growth factor family. EGFR is a cell surface protein that binds to epidermal growth factor. Binding of the protein to a ligand induces receptor dimerization and tyrosine autophosphorylation and leads to cell proliferation. Mutations in this gene are associated with lung cancer. |
| Usage | For research use only. |



Hu_EGFR VIII K562 Cell Line

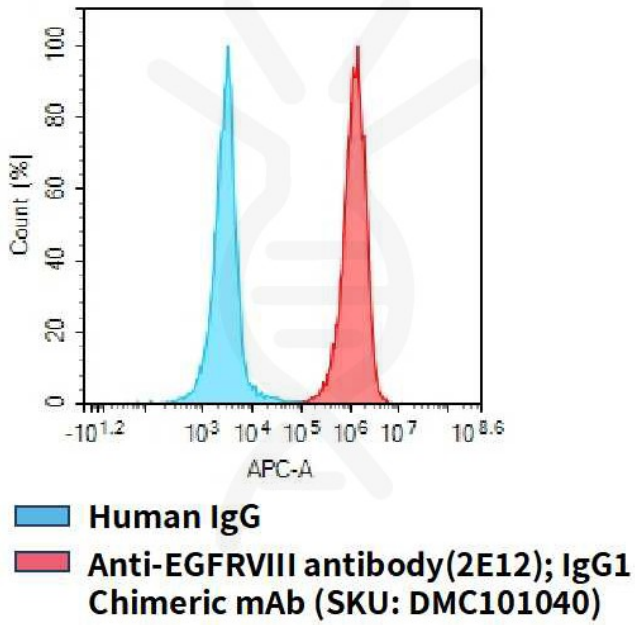


Figure 1. Flow cytometry analysis of human EGFR overexpression using Hu_EGFR VIII K562 Cell Line (Cat. No. CEL100021) and Anti-EGFRVIII antibody(2E12)IgG1 Chimeric mAb (Cat. No. DMC101040)

