

PRODUCT INFORMATION

Target	Trop2
Description	Monoclonal Cell Line Derived from K562 Cells, Engineered for Stable Expression of Human TROP2 Using Lentiviral Technology
Host Cells	K562
Uniprot ID	P09758
Applications	FACS Data
Growth media	RPMI-1640+10% FBS+1% P.S+1% Gln+2 ug/mL Puromycin
Package	5E6 Cells/mL
Host Species	Human
Suggested Control	SKU: BME100023
Warranty and Disclaimer	1. Please inspect cells upon receipt and report any issues promptly. 2. We offer one-time replacements for issues reported within a week of receipt. 3. User-induced issues are not eligible for free replacements. 4. We do not accept liability for damages resulting from cell use, storage, or loss. 5. Feedback received more than one month after receipt will not be processed.
Storage&Shipping	Cells are shipped using dry ice and require liquid nitrogen storage for long term preservation.
Synonyms	TACSTD2; GA733-1; M1S1; TROP2
Background	This intronless gene encodes a carcinoma-associated antigen. This antigen is a cell surface receptor that transduces calcium signals. Mutations of this gene have been associated with gelatinous drop-like corneal dystrophy.
Usage	For research use only.



Hu_TROP2 K562 Cell Line

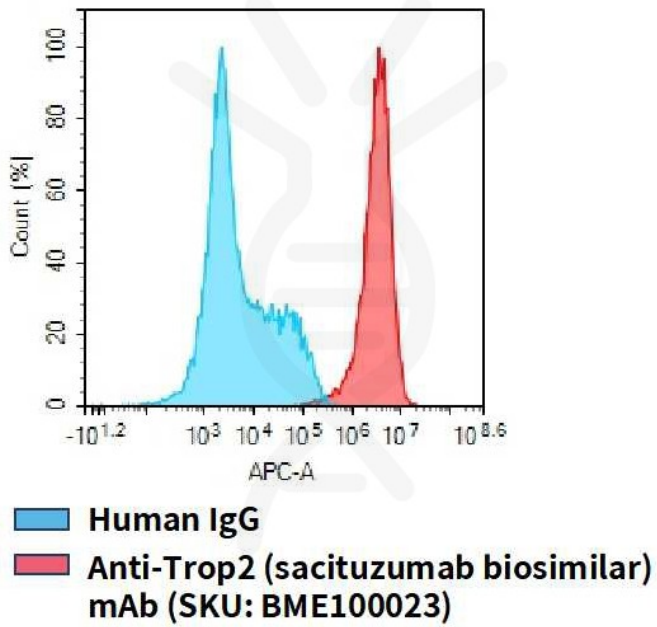


Figure 1. Flow cytometry analysis of human TROP2 overexpression using Hu_TROP2 K562 Cell Line (Cat. No. CEL100030) and Anti-Trop2 (sacituzumab biosimilar) mAb (Cat. No. BME100023)

