

**PRODUCT INFORMATION**

<b>Tag</b>	C-Flag&Strep Tag
<b>Expression Host</b>	HEK293
<b>Target</b>	ADGRE1
<b>Synonyms</b>	EMR1; TM7LN3
<b>Description</b>	Human ADGRE1-Strep full length protein-synthetic nanodisc
<b>Uniprot ID</b>	Q14246
<b>Protein Families</b>	Druggable Genome, GPCR, Transmembrane
<b>Protein Pathways</b>	N/A
<b>Molecular Weight</b>	The human full length ADGRE1-Strep protein has a MW of 97.7 kDa
<b>Delivery</b>	In Stock
<b>Formulation &amp; Reconstitution</b>	Lyophilized from nanodisc solubilization buffer (20 mM Tris-HCl, 150 mM NaCl, pH 8.0). Normally 5% - 8% trehalose is added as protectants before lyophilization. Please see Certificate of Analysis for specific instructions. Do not use solvents with a pH below 6.5 or those containing high concentrations of divalent metal ions (greater than 5 mM) in subsequent experiments.
<b>Sterility</b>	Products are supplied non-sterile. For cell culture applications, dilute in appropriate medium and sterile-filter (0.22 µm) prior to use.
<b>Storage&amp;Shipping</b>	Store at -20°C to -80°C for 12 months in lyophilized form. After reconstitution, if not intended for use within a month, aliquot and store at -80°C (Avoid repeated freezing and thawing). Lyophilized proteins are shipped at ambient temperature.
<b>Background</b>	This protein that has a domain resembling seven transmembrane G protein-coupled hormone receptors (7TM receptors) at its C-terminus. The N-terminus of the encoded protein has six EGF-like modules, separated from the transmembrane segments by a serine/threonine-rich domain, a feature reminiscent of mucin-like, single-span, integral membrane glycoproteins with adhesive properties. Orphan receptor involved in cell adhesion and probably in cell-cell interactions specifically involving cells of the immune system. May play a role in regulatory T-cells (Treg) development.
<b>Usage</b>	Research use only
<b>Conjugate</b>	Unconjugated



### ELISA assay to evaluate ADGRE1-Strep-Nanodisc 0.2 $\mu$ g Human ADGRE1-Strep-Nanodisc per well

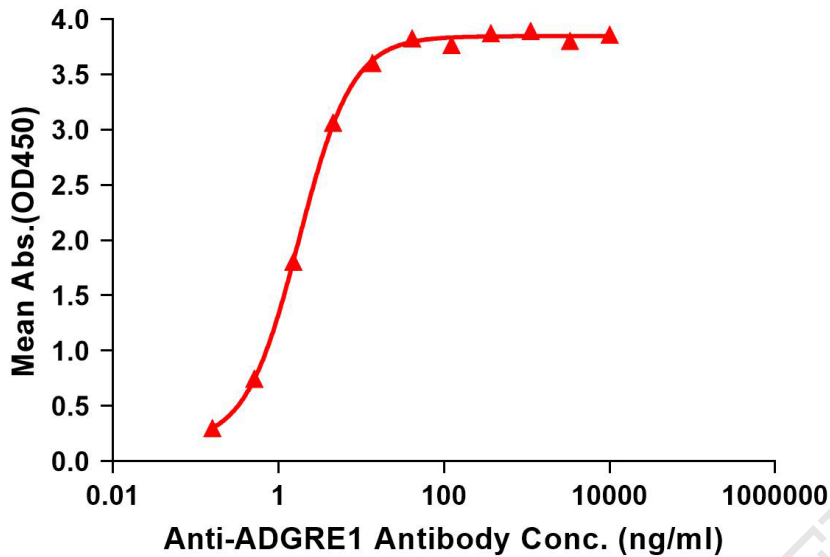


Figure 1. Elisa plates were pre-coated with C-Flag&Strep Tag ADGRE1-Strep-Nanodisc (0.2 $\mu$ g/per well). Serial diluted anti-ADGRE1 monoclonal antibody (DMC100481) solutions were added, washed, and incubated with secondary antibody before Elisa reading. From above data, the EC50 for anti-ADGRE1 monoclonal antibody binding with ADGRE1-Strep-Nanodisc is 1.769ng/ml.

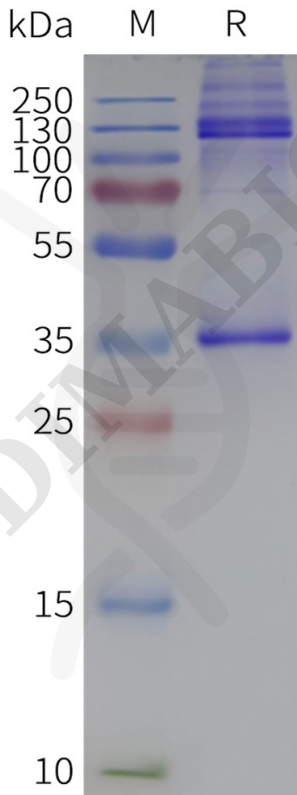


Figure 2. Human ADGRE1-Strep-Nanodisc, C-Flag&Strep Tag on SDS-PAGE

