

PRODUCT INFORMATION

Target	ADGRE2
Synonyms	Adhesion G protein-coupled receptor E2;EGF-like module receptor 2;EGF-like module-containing mucin-like hormone receptor-like 2;CD312
Description	Recombinant human ADGRE2 protein with C-terminal 7×His tag
Delivery	In Stock
Uniprot ID	Q9UHX3
Expression Host	HEK293
Tag	C-7×His Tag
Molecular Characterization	ADGRE2(Gln24-Thr537) 7×His tag
Molecular Weight	The protein has a predicted molecular mass of 57.2 kDa after removal of the signal peptide. The apparent molecular mass of ADGRE2-His is approximately 70-100 kDa due to glycosylation.
Purity	The purity of the protein is greater than 85% as determined by SDS-PAGE and Coomassie blue staining.
Formulation & Reconstitution	Lyophilized from sterile PBS, pH 7.4. Normally 5 % - 8% trehalose is added as protectants before lyophilization. Please see Certificate of Analysis for specific instructions of reconstitution.
Storage & Shipping	Store at -20°C to -80°C for 12 months in lyophilized form. After reconstitution, if not intended for use within a month, aliquot and store at -80°C (Avoid repeated freezing and thawing). Lyophilized proteins are shipped at ambient temperature.
Background	This gene encodes a member of the class B seven-span transmembrane (TM7) subfamily of G-protein coupled receptors. These proteins are characterized by an extended extracellular region with a variable number of N-terminal epidermal growth factor-like domains coupled to a TM7 domain via a mucin-like spacer domain. The encoded protein is expressed mainly in myeloid cells where it promotes cell-cell adhesion through interaction with chondroitin sulfate chains. This gene is situated in a cluster of related genes on chromosome 19. Alternatively spliced transcript variants encoding multiple isoforms have been observed for this gene. [provided by RefSeq, Aug 2012]
Usage	Research use only
Conjugate	Unconjugated



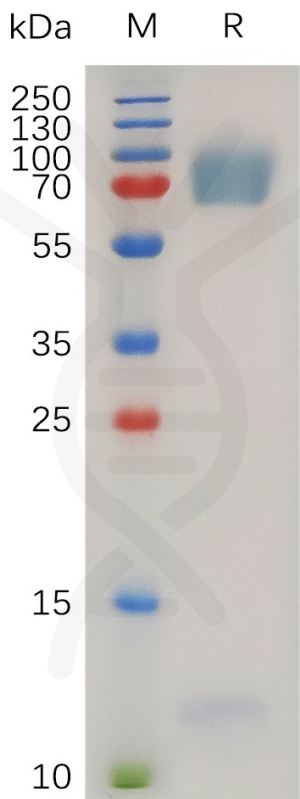


Figure 1. Human ADGRE2 Protein, His Tag on SDS-PAGE under reducing condition.

**Human ADGRE2, His Tagged protein ELISA**

0.2 µg of Human ADGRE2, His tagged protein per well

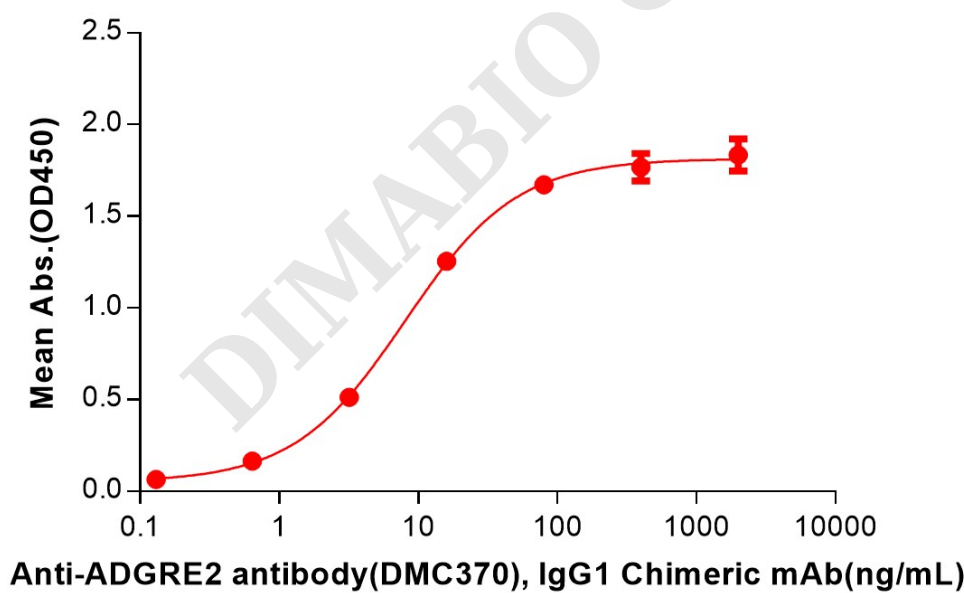


Figure 2. ELISA plate pre-coated by 2 µg/mL (100 µL/well) Human ADGRE2 Protein, His Tag (PME100741) can bind Anti-ADGRE2 antibody(DMC370), IgG1 Chimeric mAb in a linear range of 3.20-80 ng/mL.



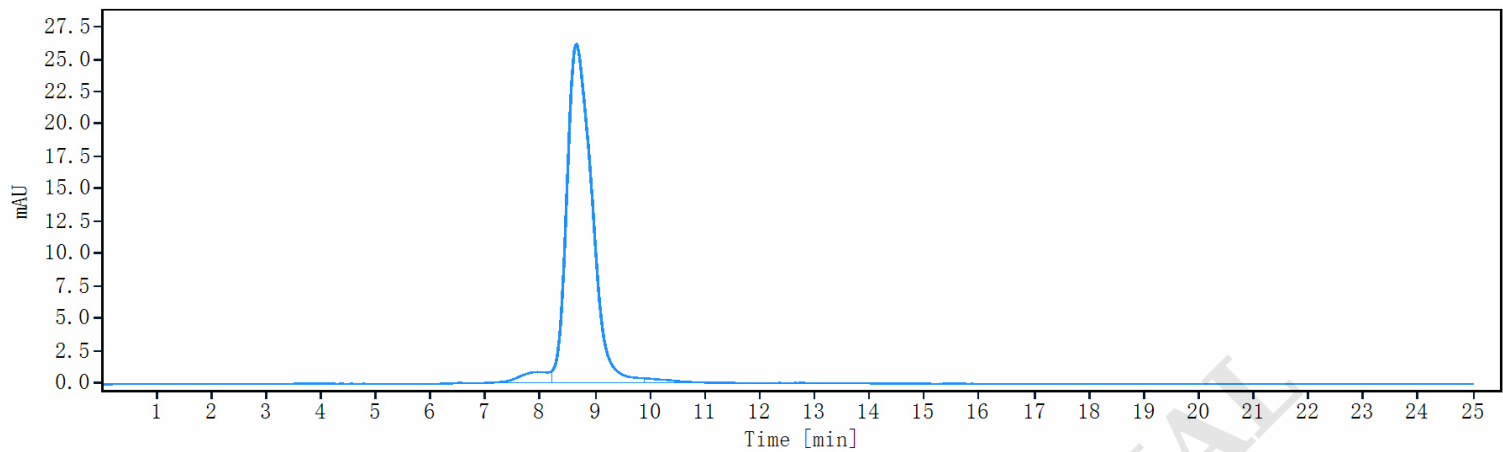


Figure 3. The purity of Human ADGRE2 Protein, His Tag (PME100741) was greater than 90% as determined by SEC-HPLC.

