

**PRODUCT INFORMATION**

<b>Target</b>	ALB
<b>Synonyms</b>	HSA;PRO0883;PRO0903;PRO1341
<b>Description</b>	Recombinant Human ALB with C-terminal 6×His tag
<b>Delivery</b>	In Stock
<b>Uniprot ID</b>	P02768
<b>Expression Host</b>	HEK293
<b>Tag</b>	C-6×His Tag
<b>Molecular Characterization</b>	ALB(Asp25-Leu609) 6×His tag
<b>Molecular Weight</b>	The protein has a predicted molecular mass of 67.3 kDa after removal of the signal peptide. The apparent molecular mass of ALB-His is approximately 55-70 kDa due to glycosylation.
<b>Purity</b>	The purity of the protein is greater than 95% as determined by SDS-PAGE and Coomassie blue staining.
<b>Formulation &amp; Reconstitution</b>	Lyophilized from sterile PBS, pH 7.4. Normally 5 % - 8% trehalose is added as protectants before lyophilization. Please see Certificate of Analysis for specific instructions of reconstitution.
<b>Storage&amp;Shipping</b>	Store at -20°C to -80°C for 12 months in lyophilized form. After reconstitution, if not intended for use within a month, aliquot and store at -80°C (Avoid repeated freezing and thawing). Lyophilized proteins are shipped at ambient temperature.
<b>Background</b>	This gene encodes the most abundant protein in human blood. This protein functions in the regulation of blood plasma colloid osmotic pressure and acts as a carrier protein for a wide range of endogenous molecules including hormones, fatty acids, and metabolites, as well as exogenous drugs. Additionally, this protein exhibits an esterase-like activity with broad substrate specificity. The encoded preproprotein is proteolytically processed to generate the mature protein. A peptide derived from this protein, EPI-X4, is an endogenous inhibitor of the CXCR4 chemokine receptor. [provided by RefSeq, Jul 2016]
<b>Usage</b>	Research use only
<b>Conjugate</b>	Unconjugated



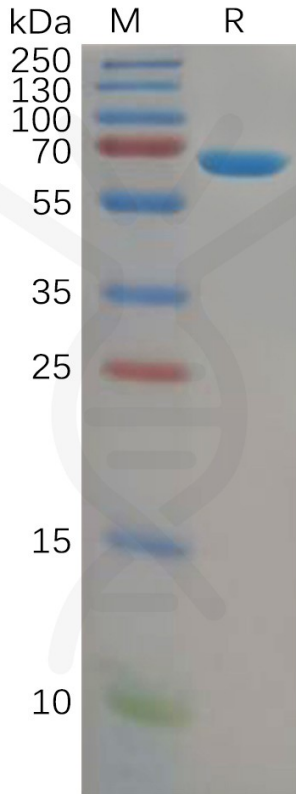


Figure 1. Human ALB Protein, His Tag on SDS-PAGE under reducing condition.

### Human ALB, His Tagged protein ELISA

0.2  $\mu$ g of Human ALB, His tagged protein per well

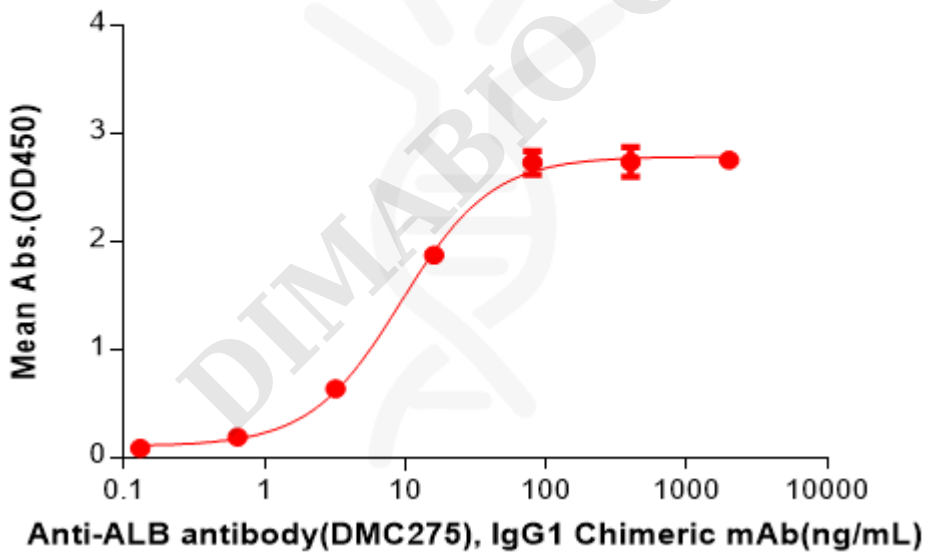


Figure 2. ELISA plate pre-coated by 2  $\mu$ g/mL (100  $\mu$ L/well) Human ALB Protein, His Tag(PME100591) can bind Anti-ALB antibody(DMC275), IgG1 Chimeric mAb in a linear range of 3.20-16 ng/mL.

