

PRODUCT INFORMATION

Target	APLP2
Synonyms	APLP-2;APPH;APPL2;CDEBP
Description	Recombinant Human APLP2 Protein with C-terminal 6×His tag
Delivery	In Stock
Uniprot ID	Q06481
Expression Host	HEK293
Tag	C-6×His Tag
Molecular Characterization	APLP2(Gly32-Ser692) 6×His tag
Molecular Weight	The protein has a predicted molecular mass of 76.9 kDa after removal of the signal peptide. The apparent molecular mass of APLP2-His is approximately 100-130 kDa due to glycosylation.
Purity	The purity of the protein is greater than 85% as determined by SDS-PAGE and Coomassie blue staining.
Formulation & Reconstitution	Lyophilized from sterile PBS, pH 7.4. Normally 5 % - 8% trehalose is added as protectants before lyophilization. Please see Certificate of Analysis for specific instructions of reconstitution.
Storage&Shipping	Store at -20°C to -80°C for 12 months in lyophilized form. After reconstitution, if not intended for use within a month, aliquot and store at -80°C (Avoid repeated freezing and thawing). Lyophilized proteins are shipped at ambient temperature.
Background	This gene encodes amyloid precursor- like protein 2 (APLP2), which is a member of the APP (amyloid precursor protein) family including APP, APLP1 and APLP2. This protein is ubiquitously expressed. It contains heparin-, copper- and zinc- binding domains at the N-terminus, BPTI/Kunitz inhibitor and E2 domains in the middle region, and transmembrane and intracellular domains at the C-terminus. This protein interacts with major histocompatibility complex (MHC) class I molecules. The synergy of this protein and the APP is required to mediate neuromuscular transmission, spatial learning and synaptic plasticity. This protein has been implicated in the pathogenesis of Alzheimer's disease. Multiple alternatively spliced transcript variants encoding different isoforms have been identified. [provided by RefSeq, Aug 2011]
Usage	Research use only
Conjugate	Unconjugated



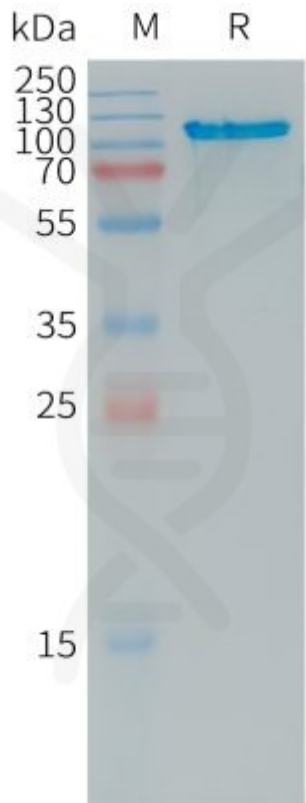


Figure 1.Human APLP2 Protein, His Tag on SDS-PAGE under reducing condition.

