

## PRODUCT INFORMATION

<b>Target</b>	BACE1
<b>Synonyms</b>	ASP2;BACE;HSPC104
<b>Description</b>	Recombinant Human BACE1 Protein with C-terminal 6×His tag
<b>Delivery</b>	In Stock
<b>Uniprot ID</b>	P56817
<b>Expression Host</b>	HEK293
<b>Tag</b>	C-6×His Tag
<b>Molecular Characterization</b>	BACE1(Thr22-Thr457) 6×His tag
<b>Molecular Weight</b>	The protein has a predicted molecular mass of 49.3 kDa after removal of the signal peptide. The apparent molecular mass of BACE1-His is approximately 55-100 kDa due to glycosylation.
<b>Purity</b>	The purity of the protein is greater than 85% as determined by SDS-PAGE and Coomassie blue staining.
<b>Formulation &amp; Reconstitution</b>	Lyophilized from sterile PBS, pH 7.4. Normally 5 % - 8% trehalose is added as protectants before lyophilization. Please see Certificate of Analysis for specific instructions of reconstitution.
<b>Storage&amp;Shipping</b>	Store at -20°C to -80°C for 12 months in lyophilized form. After reconstitution, if not intended for use within a month, aliquot and store at -80°C (Avoid repeated freezing and thawing). Lyophilized proteins are shipped at ambient temperature.
<b>Background</b>	This gene encodes a member of the peptidase A1 family of aspartic proteases. Alternative splicing results in multiple transcript variants, at least one of which encodes a preproprotein that is proteolytically processed to generate the mature protease. This transmembrane protease catalyzes the first step in the formation of amyloid beta peptide from amyloid precursor protein. Amyloid beta peptides are the main constituent of amyloid beta plaques, which accumulate in the brains of human Alzheimer's disease patients. [provided by RefSeq, Nov 2015]
<b>Usage</b>	Research use only
<b>Conjugate</b>	Unconjugated



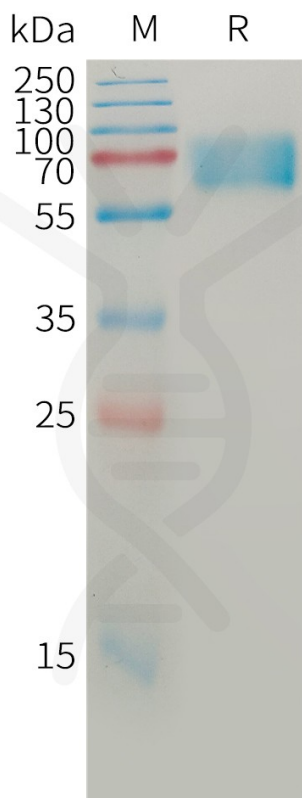


Figure 1. Human BACE1 Protein, His Tag on SDS-PAGE under reducing condition.

DIMABIO CONFIDENTIAL

