

PRODUCT INFORMATION

Target	BAFF-R
Synonyms	BAFFR;TNFRSF13C;BAFF-R;BROMIX;CD268;CVID4;prolixin
Description	Recombinant Human BAFF-R protein with C-terminal human Fc
Delivery	In Stock
Uniprot ID	Q96RJ3
Expression Host	HEK293
Tag	C-Human Fc Tag
Molecular Characterization	BAFF-R(Ser7-Ala71) hFc(Glu99-Ala330)
Molecular Weight	The protein has a predicted molecular mass of 32.7 kDa after removal of the signal peptide. The apparent molecular mass of BAFF-R-hFc is approximately 35-55 kDa due to glycosylation.
Purity	The purity of the protein is greater than 95% as determined by SDS-PAGE and Coomassie blue staining.
Formulation & Reconstitution	Lyophilized from sterile PBS, pH 7.4. Normally 5 % - 8% trehalose is added as protectants before lyophilization. Please see Certificate of Analysis for specific instructions of reconstitution.
Storage & Shipping	Store at -20°C to -80°C for 12 months in lyophilized form. After reconstitution, if not intended for use within a month, aliquot and store at -80°C (Avoid repeated freezing and thawing). Lyophilized proteins are shipped at ambient temperature.
Sterility	Products are supplied non-sterile. For cell culture applications, dilute in appropriate medium and sterile-filter (0.22 µm) prior to use.
Background	B cell-activating factor (BAFF) enhances B-cell survival in vitro and is a regulator of the peripheral B-cell population. Overexpression of Baff in mice results in mature B-cell hyperplasia and symptoms of systemic lupus erythematosus (SLE). Also, some SLE patients have increased levels of BAFF in serum. Therefore, it has been proposed that abnormally high levels of BAFF may contribute to the pathogenesis of autoimmune diseases by enhancing the survival of autoreactive B cells. The protein encoded by this gene is a receptor for BAFF and is a type III transmembrane protein containing a single extracellular cysteine-rich domain. It is thought that this receptor is the principal receptor required for BAFF-mediated mature B-cell survival.
Usage	Research use only
Conjugate	Unconjugated



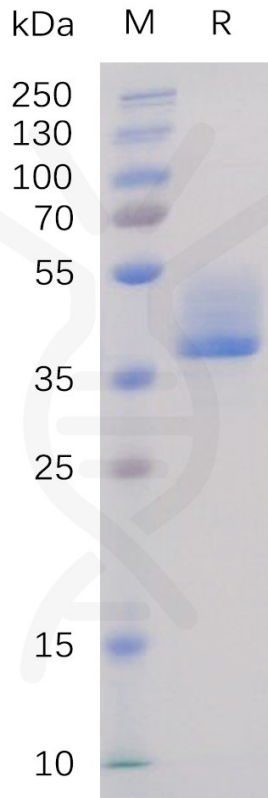


Figure 1. Human BAFF-R Protein, hFc Tag on SDS-PAGE under reducing condition.

Human BAFF-R, hFc tagged protein ELISA

0.1 μ g of Human BAFF-R, hFc tagged protein per well

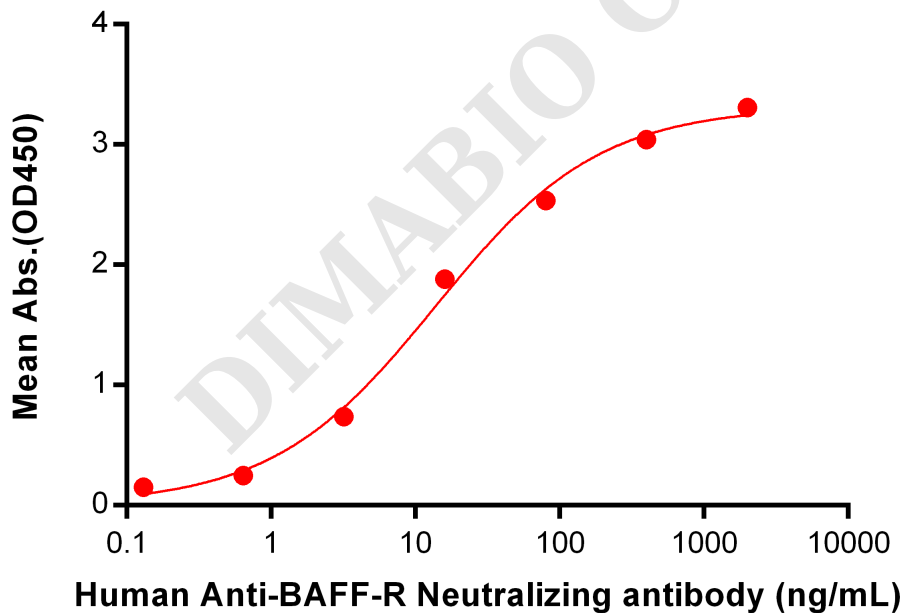


Figure 2. ELISA plate pre-coated by 2 μ g/ml (100 μ l/well) Human BAFFR, hFc tagged protein (PME100503) can bind Anti-BAFFR Neutralizing antibody BME100045 in a linear range of 3.2-80 ng/ml.

