

PRODUCT INFORMATION

Target	CALCR
Synonyms	CT-R; CTR; CRT; CTR1; C1A; Calcitonin receptor
Description	Recombinant human CALCR Protein with C-terminal human Fc tag
Delivery	In Stock
Uniprot ID	P30988
Expression Host	HEK293
Tag	C-Human Fc tag
Molecular Characterization	CALCR(Ala25-Tyr146) hFc(Glu99-Ala330)
Molecular Weight	The protein has a predicted molecular mass of 40.6 kDa after removal of the signal peptide.
Purity	The purity of the protein is greater than 95% as determined by SDS-PAGE and Coomassie blue staining.
Formulation & Reconstitution	Lyophilized from sterile PBS, pH 7.4. Normally 5% - 8% trehalose is added as protectants before lyophilization. Please see Certificate of Analysis for specific instructions of reconstitution.
Storage&Shipping	Store at -20°C to -80°C for 12 months in lyophilized form. After reconstitution, if not intended for use within a month, aliquot and store at -80°C (Avoid repeated freezing and thawing). Lyophilized proteins are shipped at ambient temperature.
Sterility	Products are supplied non-sterile. For cell culture applications, dilute in appropriate medium and sterile-filter (0.22 µm) prior to use.
Background	CALCR encodes the calcitonin receptor, a G-protein coupled receptor (GPCR) that binds calcitonin, a hormone involved in calcium and bone homeostasis. CALCR primarily couples to Gs proteins, stimulating adenylyl cyclase and increasing intracellular cAMP, and can also couple to Gq/11 proteins to trigger phospholipase C signaling. It is expressed in osteoclasts, kidney, brain, and thyroid C-cells, where it regulates bone resorption, calcium metabolism, and neuroendocrine functions. CALCR is a therapeutic target for osteoporosis, Paget's disease, and other bone disorders, and is also studied in pain modulation and metabolic regulation.
Usage	Research use only
Conjugate	Unconjugated



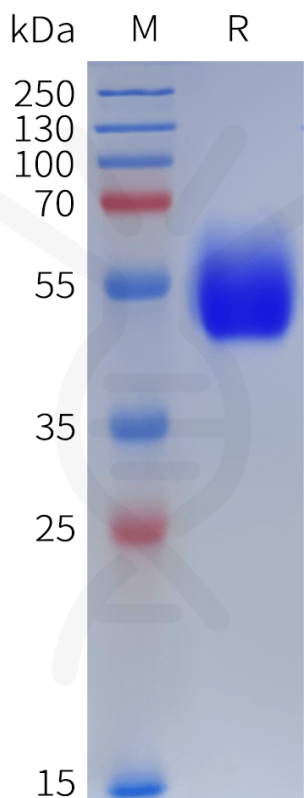


Figure 1. Human CALCR Protein, hFc Tag on SDS-PAGE under reducing condition.

DIMABIO CONFIDENTIAL

