

PRODUCT INFORMATION

Target	CCL17
Synonyms	TARC; ABCD-2; SCYA17; A-152E5.3
Description	Recombinant human CCL17 Protein with C-terminal human Fc tag
Delivery	In Stock
Uniprot ID	Q92583
Expression Host	HEK293
Tag	C-Human Fc tag
Molecular Characterization	CCL17(Ala24-Ser94) hFc(Glu99-Ala330)
Molecular Weight	The protein has a predicted molecular mass of 34.2 kDa after removal of the signal peptide. The apparent molecular mass of CCL17-hFc is approximately 35-55 kDa due to glycosylation.
Purity	The purity of the protein is greater than 95% as determined by SDS-PAGE and Coomassie blue staining.
Formulation & Reconstitution	Lyophilized from sterile PBS, pH 7.4. Normally 5% - 8% trehalose is added as protectants before lyophilization. Please see Certificate of Analysis for specific instructions of reconstitution.
Storage&Shipping	Store at -20°C to -80°C for 12 months in lyophilized form. After reconstitution, if not intended for use within a month, aliquot and store at -80°C (Avoid repeated freezing and thawing). Lyophilized proteins are shipped at ambient temperature.
Sterility	Products are supplied non-sterile. For cell culture applications, dilute in appropriate medium and sterile-filter (0.22 µm) prior to use.
Background	This antimicrobial gene is one of several Cys-Cys (CC) cytokine genes clustered on the q arm of chromosome 16. Cytokines are a family of secreted proteins involved in immunoregulatory and inflammatory processes. The CC cytokines are proteins characterized by two adjacent cysteines. The cytokine encoded by this gene displays chemotactic activity for T lymphocytes, but not monocytes or granulocytes. The product of this gene binds to chemokine receptors CCR4 and CCR8. This chemokine plays important roles in T cell development in thymus as well as in trafficking and activation of mature T cells. [provided by RefSeq, Sep 2014]
Usage	Research use only
Conjugate	Unconjugated



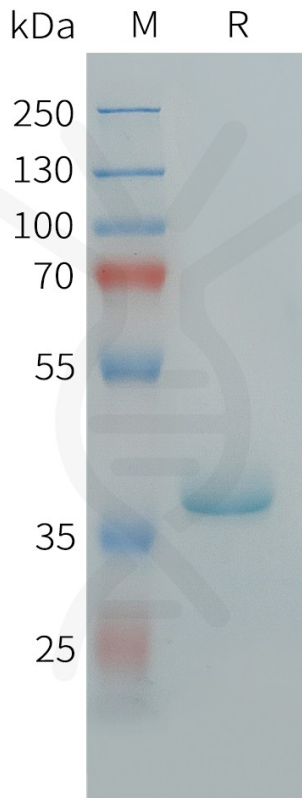


Figure 1. Human CCL17 Protein, hFc Tag on SDS-PAGE under reducing condition.

Human CCL17, hFc Tagged Protein ELISA

0.2 μ g of Human CCL17, hFc tagged protein per well

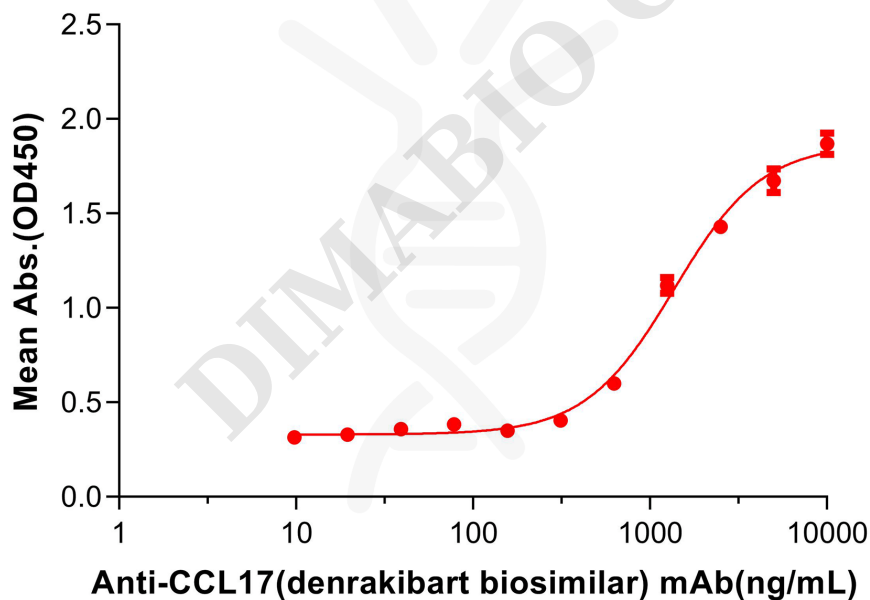


Figure 2. ELISA plate pre-coated by 2 μ g/mL (100 μ L/well) Human CCL17 Protein, hFc Tag (PME101461) can bind Anti-CCL17(denrakibart biosimilar) mAb(BME100474) in a linear range of 625-1250 ng/mL. In order to specifically detect BME100474, mouse anti-human Fab-specific antibody was used as detection antibody.

