

PRODUCT INFORMATION

Target	CCL3
Synonyms	SCI; LD78; MIP1A; SCYA3; G0S19-1; LD78ALPHA; MIP-1-alpha
Description	Recombinant human CCL3 Protein with C-terminal human Fc tag
Delivery	In Stock
Uniprot ID	P10147
Expression Host	HEK293
Tag	C-Human Fc tag
Molecular Characterization	CCL3(Ala27-Ala92) hFc(Glu99-Ala330)
Molecular Weight	The protein has a predicted molecular mass of 33.6 kDa after removal of the signal peptide. The apparent molecular mass of CCL3-hFc is approximately 35-55 kDa due to glycosylation.
Purity	The purity of the protein is greater than 95% as determined by SDS-PAGE and Coomassie blue staining.
Formulation & Reconstitution	Lyophilized from sterile PBS, pH 7.4. Normally 5 % - 8% trehalose is added as protectants before lyophilization. Please see Certificate of Analysis for specific instructions.
Storage&Shipping	Store at -20°C to -80°C for 12 months in lyophilized form. After reconstitution, if not intended for use within a month, aliquot and store at -80°C (Avoid repeated freezing and thawing).Lyophilized proteins are shipped at ambient temperature.
Background	This locus represents a small inducible cytokine. The encoded protein, also known as macrophage inflammatory protein 1 alpha, plays a role in inflammatory responses through binding to the receptors CCR1, CCR4 and CCR5. Polymorphisms at this locus may be associated with both resistance and susceptibility to infection by human immunodeficiency virus type 1.[provided by RefSeq, Sep 2010]
Usage	Research use only
Conjugate	Unconjugated



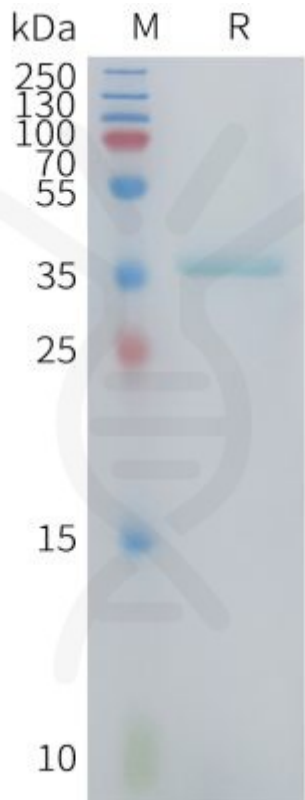


Figure 1. Human CCL3 Protein, hFc Tag on SDS-PAGE under reducing condition.

