

PRODUCT INFORMATION

Target	CCR8
Synonyms	CCR-8;CMKBRL2;CKR-L1;GPRCY6;TER1;CDw198
Description	Recombinant human CCR8 protein with C-terminal mouse Fc tag
Delivery	In Stock
Uniprot ID	P51685
Expression Host	HEK293
Tag	C-Mouse Fc Tag
Molecular Characterization	CCR8(Met1-Lys35) mFc(Pro99-Lys330)
Molecular Weight	The protein has a predicted molecular mass of 30.2 kDa after removal of the signal peptide. The apparent molecular mass of CCR8-mFc is approximately 33-55 kDa due to glycosylation.
Purity	The purity of the protein is greater than 95% as determined by SDS-PAGE and Coomassie blue staining.
Formulation & Reconstitution	Lyophilized from sterile PBS, pH 7.4. Normally 5 % - 8% trehalose is added as protectants before lyophilization. Please see Certificate of Analysis for specific instructions of reconstitution.
Storage & Shipping	Store at -20°C to -80°C for 12 months in lyophilized form. After reconstitution, if not intended for use within a month, aliquot and store at -80°C (Avoid repeated freezing and thawing). Lyophilized proteins are shipped at ambient temperature.
Background	This gene encodes a member of the beta chemokine receptor family, which is predicted to be a seven transmembrane protein similar to G protein-coupled receptors. Chemokines and their receptors are important for the migration of various cell types into the inflammatory sites. This receptor protein preferentially expresses in the thymus. I-309, thymus activation-regulated cytokine (TARC) and macrophage inflammatory protein-1 beta (MIP-1 beta) have been identified as ligands of this receptor. Studies of this receptor and its ligands suggested its role in regulation of monocyte chemotaxis and thymic cell apoptosis. More specifically, this receptor may contribute to the proper positioning of activated T cells within the antigenic challenge sites and specialized areas of lymphoid tissues. This gene is located at the chemokine receptor gene cluster region. [provided by RefSeq, Jul 2008]
Usage	Research use only
Conjugate	Unconjugated



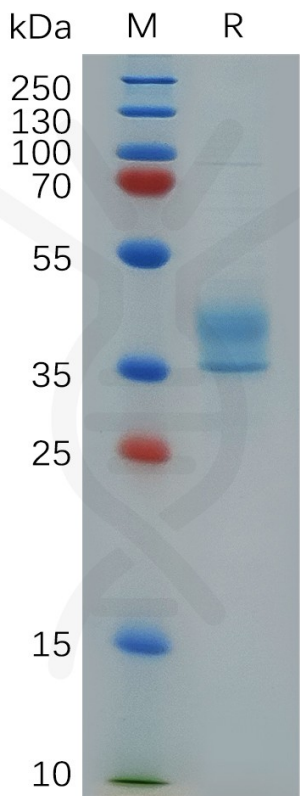


Figure 1. Human CCR8, mFc Tag on SDS-PAGE under reducing condition.

Human CCR8, mFc Tagged protein ELISA

0.2 µg of Human CCR8, mFc tagged protein per well

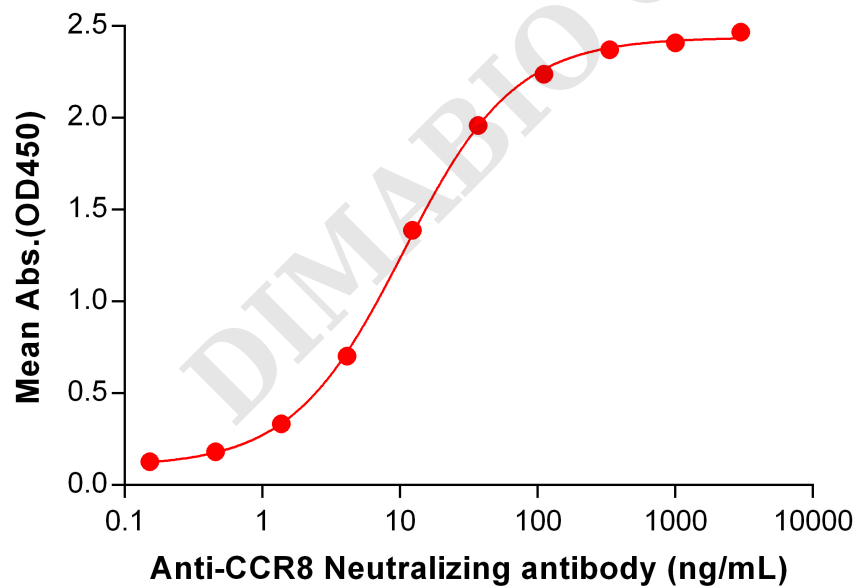


Figure 2. ELISA plate pre-coated by 2 µg/mL (100 µL/well) Human CCR8 Protein, mFc Tag (PME101103) can bind Anti-CCR8 Neutralizing antibody BME100063 in a linear range of 1.37-111.11 ng/mL.



Human CCR8, mFc Tagged protein ELISA
0.2 µg of Human CCR8, mFc tagged protein per well

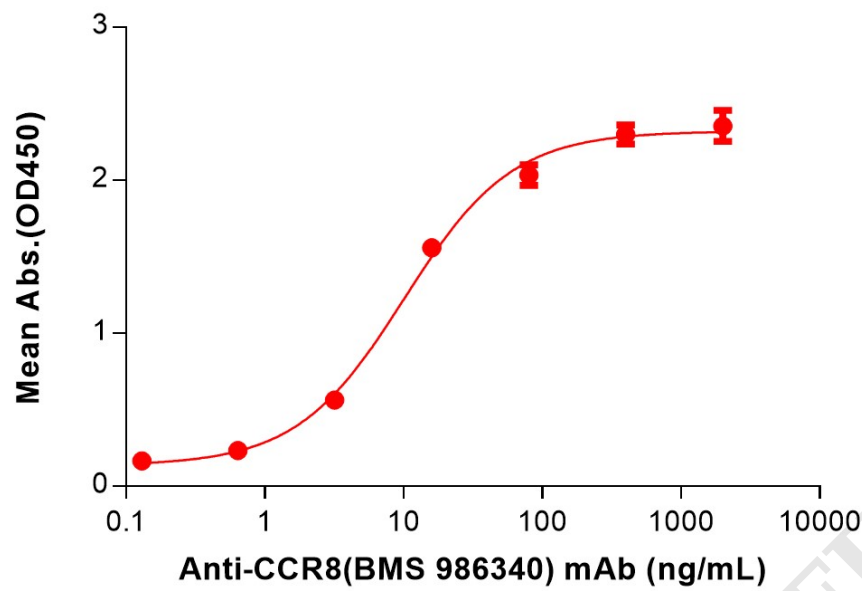


Figure 3. ELISA plate pre-coated by 2 µg/mL (100 µL/well) Human CCR8 Protein, mFc Tag (PME101103) can bind Anti-CCR8(BMS 986340) mAb (BME100115) in a linear range of 0.64–80 ng/mL.

