

PRODUCT INFORMATION

Target	CD14
Synonyms	CD14 Molecule; Myeloid Cell-Specific Leucine-Rich Glycoprotein; CD14 Antigen; Monocyte Differentiation Antigen CD14
Description	Recombinant Human CD14(20-352) Protein with C-terminal 7×His tag
Delivery	In Stock
Uniprot ID	P08571
Expression Host	HEK293
Tag	C-7×His Tag
Molecular Characterization	CD14(Thr20-Cys352) 7×His tag
Molecular Weight	The protein has a predicted molecular mass of 36.7 kDa after removal of the signal peptide. The apparent molecular mass of CD14(20-352)-7×His is approximately 35-55 kDa due to glycosylation.
Purity	The purity of the protein is greater than 85% as determined by SDS-PAGE and Coomassie blue staining.
Formulation & Reconstitution	Lyophilized from sterile PBS, pH 7.4. Normally 5% - 8% trehalose is added as protectants before lyophilization. Please see Certificate of Analysis for specific instructions of reconstitution.
Storage & Shipping	Store at -20°C to -80°C for 12 months in lyophilized form. After reconstitution, if not intended for use within a month, aliquot and store at -80°C (Avoid repeated freezing and thawing). Lyophilized proteins are shipped at ambient temperature.
Sterility	Products are supplied non-sterile. For cell culture applications, dilute in appropriate medium and sterile-filter (0.22 µm) prior to use.
Background	The protein encoded by this gene is a surface antigen that is preferentially expressed on monocytes/macrophages. It cooperates with other proteins to mediate the innate immune response to bacterial lipopolysaccharide, and to viruses. This gene has been identified as a target candidate in the treatment of SARS-CoV-2-infected patients to potentially lessen or inhibit a severe inflammatory response. Alternative splicing results in multiple transcript variants encoding the same protein. [provided by RefSeq, Aug 2020]
Usage	Research use only
Conjugate	Unconjugated



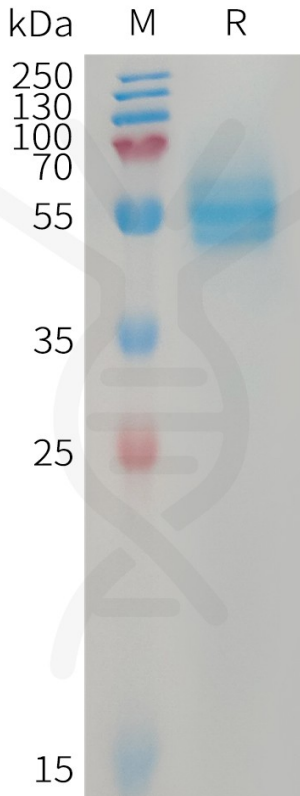


Figure 1. Human CD14(20-352) Protein, His Tag on SDS-PAGE under reducing condition.

Human CD14(20-352), His Tagged protein ELISA

0.2 μ g of Human CD14(20-352), His tagged protein per well

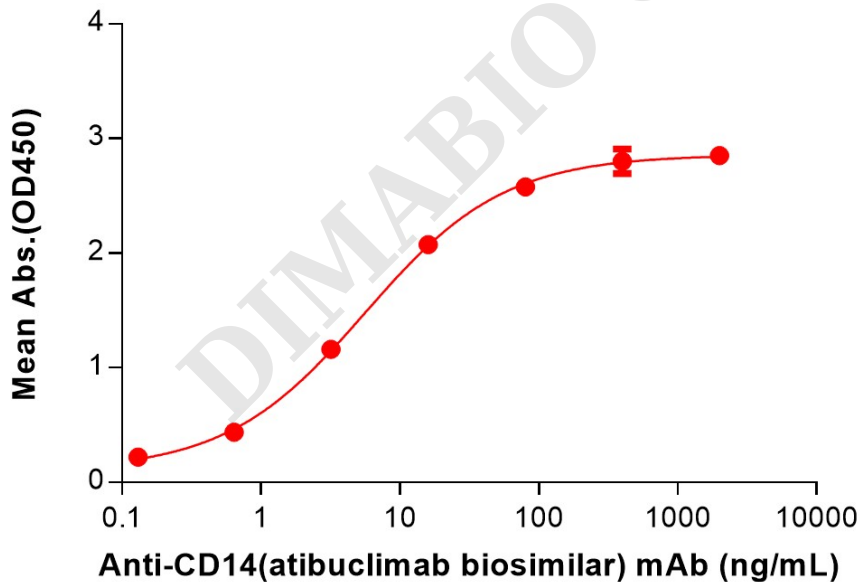


Figure 2. ELISA plate pre-coated by 2 μ g/mL (100 μ L/well) Human CD14(20-352) Protein, His Tag (PME101230) can bind Anti-CD14(atibuclimab biosimilar) mAb (BME100205) in a linear range of 0.64–80 ng/mL.

