

PRODUCT INFORMATION

| | |
|------------------------------|--|
| Target | CD155 |
| Synonyms | PVR;FLJ25946;PVS;CD155;TAGE4;HVED;NECL5 |
| Description | Recombinant human CD155 protein with C-terminal human Fc tag |
| Delivery | In Stock |
| Uniprot ID | P15151 |
| Expression Host | HEK293 |
| Tag | C-Human Fc Tag |
| Molecular Characterization | CD155(Trp21-Asn343) hFc(Glu99-Ala330) |
| Molecular Weight | The protein has a predicted molecular mass of 61.2 kDa after removal of the signal peptide. The apparent molecular mass of CD155-hFc is approximately 70-100 kDa due to glycosylation. |
| Purity | The purity of the protein is greater than 95% as determined by SDS-PAGE and Coomassie blue staining. |
| Formulation & Reconstitution | Lyophilized from sterile PBS, pH 7.4. Normally 5 % - 8% trehalose is added as protectants before lyophilization. Please see Certificate of Analysis for specific instructions of reconstitution. |
| Storage & Shipping | Store at -20°C to -80°C for 12 months in lyophilized form. After reconstitution, if not intended for use within a month, aliquot and store at -80°C (Avoid repeated freezing and thawing). Lyophilized proteins are shipped at ambient temperature. |
| Background | The protein encoded by this gene is a transmembrane glycoprotein belonging to the immunoglobulin superfamily. The external domain mediates cell attachment to the extracellular matrix molecule vitronectin, while its intracellular domain interacts with the dynein light chain Tctex-1/DYNLT1. The gene is specific to the primate lineage, and serves as a cellular receptor for poliovirus in the first step of poliovirus replication. Multiple transcript variants encoding different isoforms have been found for this gene. |
| Usage | Research use only |
| Conjugate | Unconjugated |



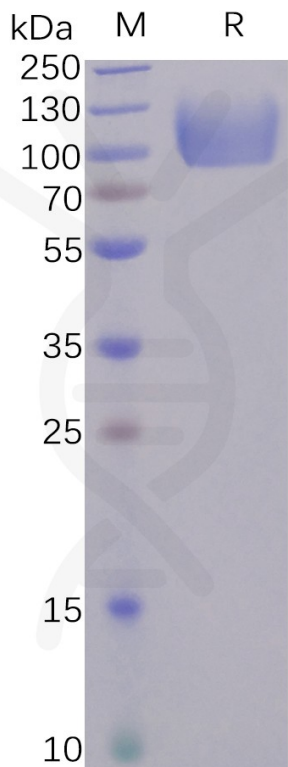


Figure 1. Human CD155 Protein, hFc Tag on SDS-PAGE under reducing condition.

Human CD155, hFc Tagged protein ELISA

0.2 µg of Human DNAM-1, mFc-His Tagged protein per well

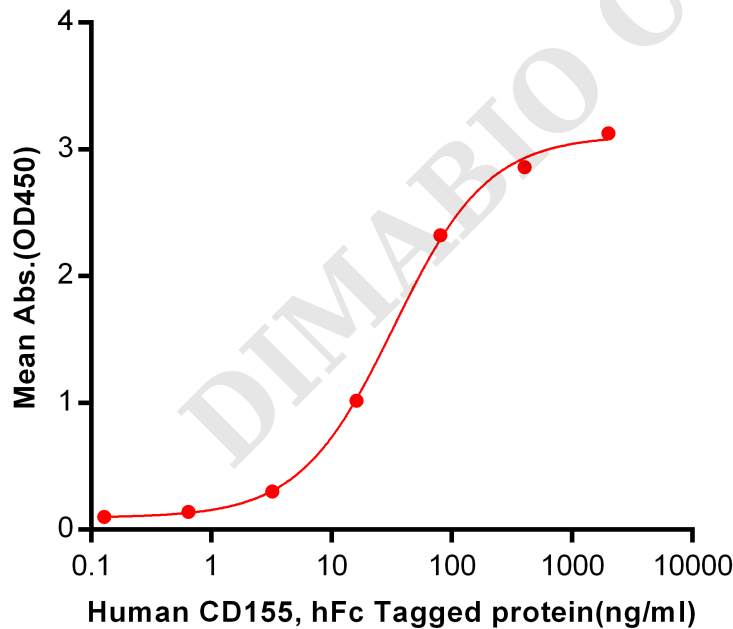


Figure 2. ELISA plate pre-coated by 2 µg/ml (100 µl/well) Human DNAM-1, mFc-His tagged protein PME100050 can bind Human CD155, hFc Tagged protein PME100485 in a linear range of 0.128-32.88 ng/ml.



Human CD155, hFc Tagged protein ELISA
0.2 µg of CD155, hFc Tagged protein per well

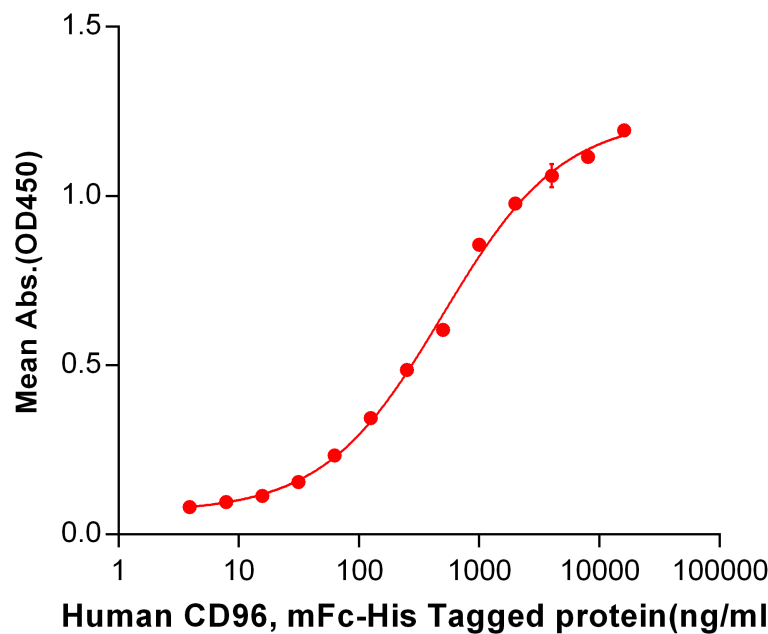


Figure 3. ELISA plate pre-coated by 2 µg/ml (100 µl/well) Human CD96, mFc-His tagged protein PME100028 can bind Human CD155, hFc tagged protein (PME100485) in a linear range of 62.5-4000 ng/ml.

