

PRODUCT INFORMATION

Target	CD160
Synonyms	BY55;NK1;NK28
Description	Recombinant human CD160 protein with C-terminal 6×His tag
Delivery	In Stock
Uniprot ID	O95971
Expression Host	HEK293
Tag	C-6×His Tag
Molecular Characterization	CD160(Ile27-Ser159) 6×His tag
Molecular Weight	The protein has a predicted molecular mass of 15.6 kDa after removal of the signal peptide. The apparent molecular mass of CD160-His is approximately 15-25 kDa due to glycosylation.
Purity	The purity of the protein is greater than 95% as determined by SDS-PAGE and Coomassie blue staining.
Formulation & Reconstitution	Lyophilized from sterile PBS, pH 7.4. Normally 5 % - 8% trehalose is added as protectants before lyophilization. Please see Certificate of Analysis for specific instructions of reconstitution.
Storage&Shipping	Store at -20°C to -80°C for 12 months in lyophilized form. After reconstitution, if not intended for use within a month, aliquot and store at -80°C (Avoid repeated freezing and thawing). Lyophilized proteins are shipped at ambient temperature.
Sterility	Products are supplied non-sterile. For cell culture applications, dilute in appropriate medium and sterile-filter (0.22 µm) prior to use.
Background	CD160 is an 27 kDa glycoprotein which was initially identified with the monoclonal antibody BY55. Its expression is tightly associated with peripheral blood NK cells and CD8 T lymphocytes with cytolytic effector activity. The cDNA sequence of CD160 predicts a cysteine-rich, glycosylphosphatidylinositol-anchored protein of 181 amino acids with a single Ig-like domain weakly homologous to KIR2DL4 molecule. CD160 is expressed at the cell surface as a tightly disulfide-linked multimer. RNA blot analysis revealed CD160 mRNAs of 1.5 and 1.6 kb whose expression was highly restricted to circulating NK and T cells, spleen and small intestine. Within NK cells CD160 is expressed by CD56dimCD16 cells whereas among circulating T cells its expression is mainly restricted to TCRgd bearing cells and to TCRab CD8brightCD95 CD56 CD28-CD27-cells. In tissues, CD160 is expressed on all intestinal intraepithelial lymphocytes. CD160 shows a broad specificity for binding to both classical and nonclassical MHC class I molecules. [provided by RefSeq, Jul 2008]
Usage	Research use only
Conjugate	Unconjugated



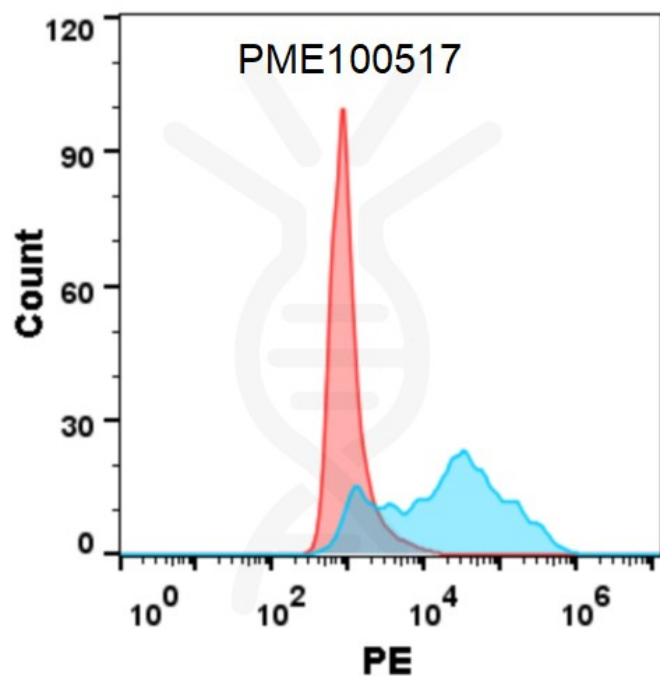


Figure 1. Flow cytometry analysis with Anti-CD160 (DMC270) on HEK293 cells transfected with human CD160 (Blue histogram) or HEK293 transfected with irrelevant protein (Red histogram).

