

**PRODUCT INFORMATION**

<b>Target</b>	CD161
<b>Synonyms</b>	NKR;KLRB1;CLEC5B;NKR-P1;NKR-P1A;hNKR-P1A
<b>Description</b>	Recombinant human CD161 Protein with N-terminal human Fc tag
<b>Delivery</b>	In Stock
<b>Uniprot ID</b>	Q12918
<b>Expression Host</b>	HEK293
<b>Tag</b>	N-Human Fc Tag
<b>Molecular Characterization</b>	hFc(Glu99-Ala330) CD161(Gln67-Ser225)
<b>Molecular Weight</b>	The protein has a predicted molecular mass of 44.6 kDa after removal of the signal peptide. The apparent molecular mass of hFc-CD161 is approximately 55-70 kDa due to glycosylation.
<b>Purity</b>	The purity of the protein is greater than 95% as determined by SDS-PAGE and Coomassie blue staining.
<b>Formulation &amp; Reconstitution</b>	Lyophilized from sterile PBS, pH 7.4. Normally 5% - 8% trehalose is added as protectants before lyophilization. Please see Certificate of Analysis for specific instructions of reconstitution.
<b>Sterility</b>	Products are supplied non-sterile. For cell culture applications, dilute in appropriate medium and sterile-filter (0.22 µm) prior to use.
<b>Storage&amp;Shipping</b>	Store at -20°C to -80°C for 12 months in lyophilized form. After reconstitution, if not intended for use within a month, aliquot and store at -80°C (Avoid repeated freezing and thawing). Lyophilized proteins are shipped at ambient temperature.
<b>Background</b>	Natural killer (NK) cells are lymphocytes that mediate cytotoxicity and secrete cytokines after immune stimulation. Several genes of the C-type lectin superfamily, including the rodent NKRP1 family of glycoproteins, are expressed by NK cells and may be involved in the regulation of NK cell function. The KLRB1 protein contains an extracellular domain with several motifs characteristic of C-type lectins, a transmembrane domain, and a cytoplasmic domain. The KLRB1 protein is classified as a type II membrane protein because it has an external C terminus. [provided by RefSeq, Jul 2008]
<b>Usage</b>	Research use only
<b>Conjugate</b>	Unconjugated



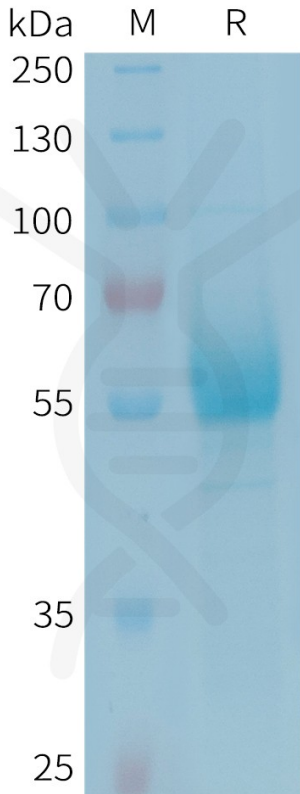


Figure 1. Human CD161 Protein, hFc Tag on SDS-PAGE under reducing condition.

### Human CD161, hFc Tagged Protein ELISA

0.2 µg of Human CD161, hFc tagged protein per well

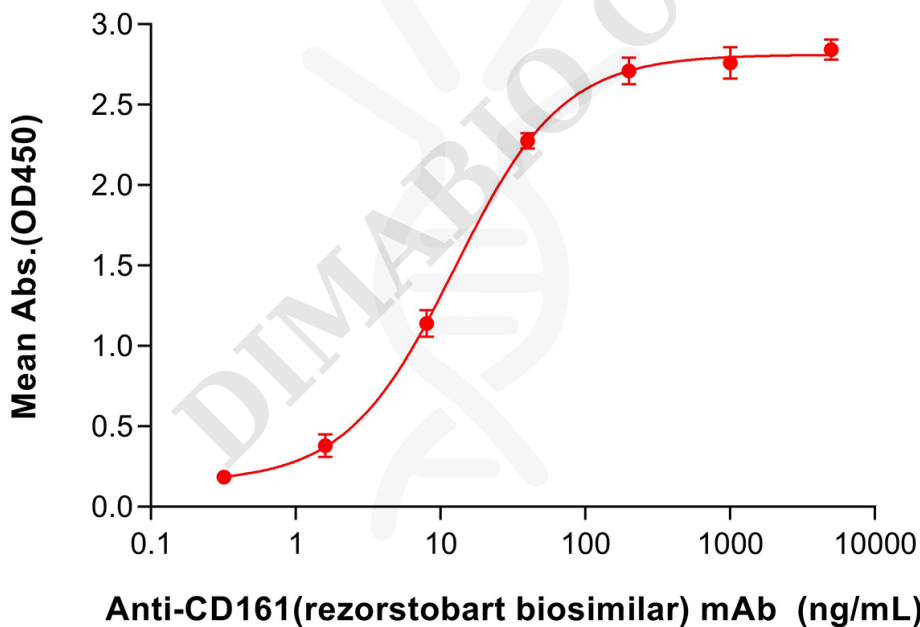


Figure 2. ELISA plate pre-coated by 2 µg/mL (100 µL/well) Human CD161 Protein, hFc Tag (PME101350) can bind Anti-CD161(rezorstobart biosimilar) mAb (BME100648) in a linear range of 8-40 ng/mL. In order to specifically detect BME100648, mouse anti-human Fab-specific antibody was used as detection antibody.

