

PRODUCT INFORMATION

Target	CD26
Synonyms	ADABP;ADCP2;CD26;DPPIV;TP103
Description	Recombinant Human CD26 with C-terminal 6×His tag
Delivery	In Stock
Uniprot ID	P27487
Expression Host	HEK293
Tag	C-6×His Tag
Molecular Characterization	CD26(Asn29-Pro766) 6×His tag
Molecular Weight	The protein has a predicted molecular mass of 111.5 kDa after removal of the signal peptide. The apparent molecular mass of CD26-His is approximately 100-130 kDa due to glycosylation.
Purity	The purity of the protein is greater than 95% as determined by SDS-PAGE and Coomassie blue staining.
Formulation & Reconstitution	Lyophilized from sterile PBS, pH 7.4. Normally 5 % - 8% trehalose is added as protectants before lyophilization. Please see Certificate of Analysis for specific instructions of reconstitution.
Storage & Shipping	Store at -20°C to -80°C for 12 months in lyophilized form. After reconstitution, if not intended for use within a month, aliquot and store at -80°C (Avoid repeated freezing and thawing). Lyophilized proteins are shipped at ambient temperature.
Background	The DPP4 gene encodes dipeptidyl peptidase 4, which is identical to adenosine deaminase complexing protein-2, and to the T-cell activation antigen CD26. It is an intrinsic type II transmembrane glycoprotein and a serine exopeptidase that cleaves X-proline dipeptides from the N-terminus of polypeptides. Dipeptidyl peptidase 4 is highly involved in glucose and insulin metabolism, as well as in immune regulation. This protein was shown to be a functional receptor for Middle East respiratory syndrome coronavirus (MERS-CoV), and protein modeling suggests that it may play a similar role with SARS-CoV-2, the virus responsible for COVID-19. [provided by RefSeq, Apr 2020]
Usage	Research use only
Conjugate	Unconjugated



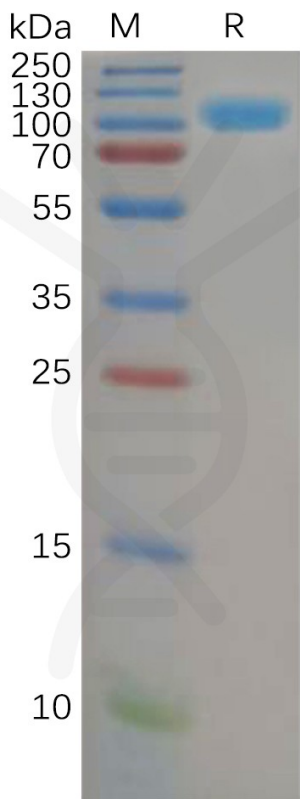


Figure 1. Human CD26 Protein, His Tag on SDS-PAGE under reducing condition.

**Human CD26 (29-766), His Tagged protein ELISA**  
0.2 µg of Human CD26 (29-766), His tagged protein per well

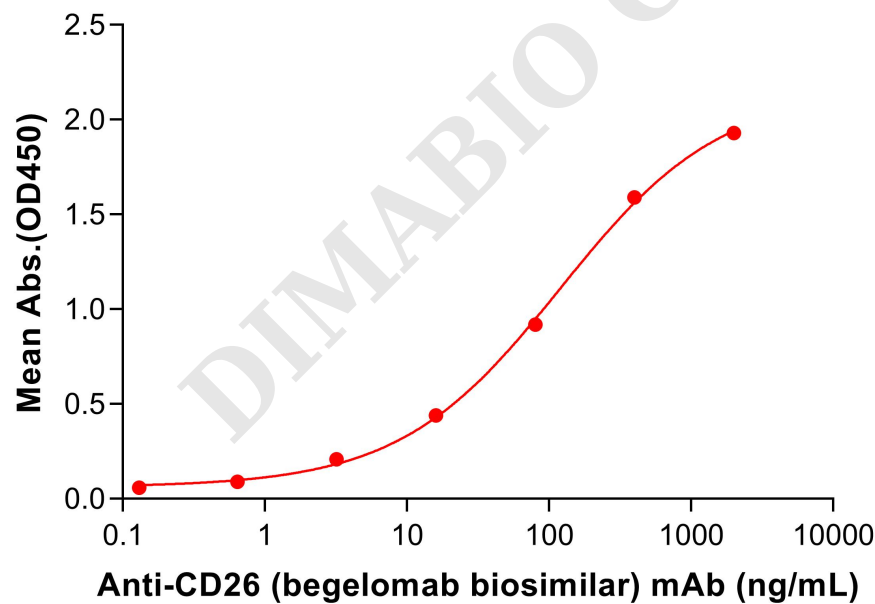


Figure 2. ELISA plate pre-coated by 2 µg/mL (100 µL/well) Human CD26 (29-766) Protein, His Tag (PME100590) can bind Anti-CD26 (begelomab biosimilar) mAb (BME100154) in a linear range of 16-400 ng/mL.

