

PRODUCT INFORMATION

Target	CD27
Synonyms	CD27;TNFRSF7;S152;T14;Tp55
Description	Recombinant human CD27 protein with C-terminal human Fc tag
Delivery	In Stock
Uniprot ID	P26842
Expression Host	HEK293
Tag	C-Human Fc Tag
Molecular Characterization	CD27(Ala20-Arg191) hFc(Glu99-Ala330)
Molecular Weight	The protein has a predicted molecular mass of 45.3 kDa after removal of the signal peptide. The apparent molecular mass of CD27-hFc is approximately 55-70 kDa due to glycosylation.
Purity	The purity of the protein is greater than 95% as determined by SDS-PAGE and Coomassie blue staining.
Formulation & Reconstitution	Lyophilized from sterile PBS, pH 7.4. Normally 5 % - 8% trehalose is added as protectants before lyophilization. Please see Certificate of Analysis for specific instructions of reconstitution.
Storage&Shipping	Store at -20°C to -80°C for 12 months in lyophilized form. After reconstitution, if not intended for use within a month, aliquot and store at -80°C (Avoid repeated freezing and thawing). Lyophilized proteins are shipped at ambient temperature.
Background	The protein encoded by this gene is a member of the TNF-receptor superfamily. This receptor is required for generation and long-term maintenance of T cell immunity. It binds to ligand CD70, and plays a key role in regulating B-cell activation and immunoglobulin synthesis. This receptor transduces signals that lead to the activation of NF-kappaB and MAPK8/JNK. Adaptor proteins TRAF2 and TRAF5 have been shown to mediate the signaling process of this receptor. CD27-binding protein (SIVA), a proapoptotic protein, can bind to this receptor and is thought to play an important role in the apoptosis induced by this receptor.
Usage	Research use only
Conjugate	Unconjugated



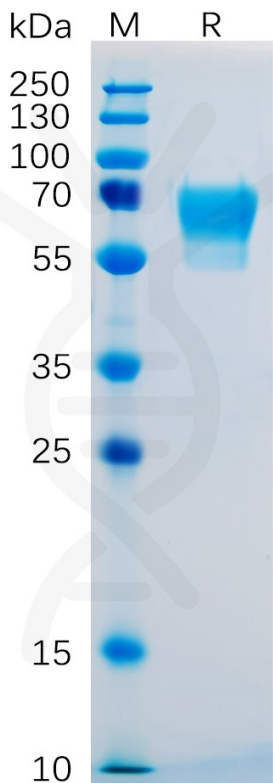


Figure 1. Human CD27 Protein, hFc Tag on SDS-PAGE under reducing condition.

**Human CD27, hFc Tagged protein ELISA**  
0.2 µg of CD27, hFc Tagged protein per well

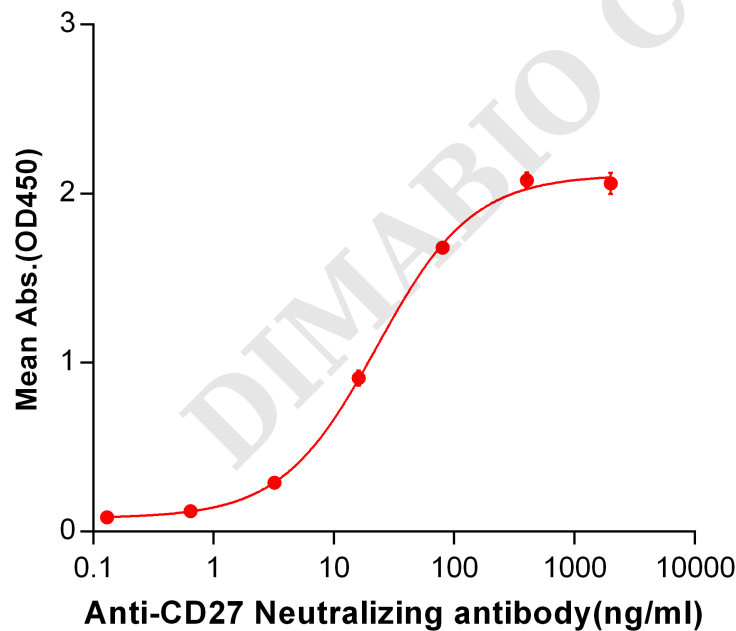


Figure 2. ELISA plate pre-coated by 2 µg/ml (100 µl/well) Human CD27, hFc tagged protein (PME100475) can bind Anti-CD27 Neutralizing antibody BME100018 in a linear range of 3.2-80.0 ng/ml.



**Human CD27, hFc Tagged protein ELISA**  
0.2 µg of CD27, hFc Tagged protein per well

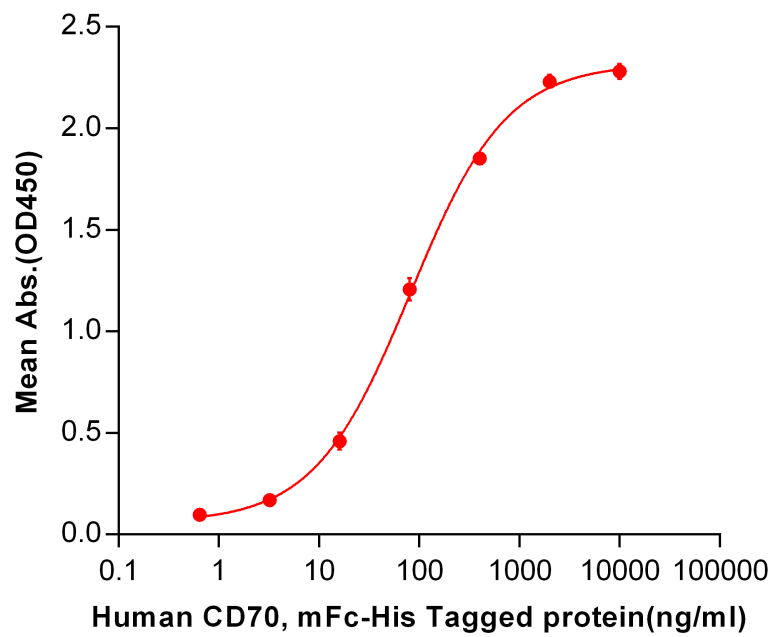


Figure 3. ELISA plate pre-coated by 2 µg/ml (100 µl/well) Human CD27, hFc tagged protein (PME100475) can bind Human CD70,mFc-His tagged protein PME100042 in a linear range of 3.2-400 ng/ml.

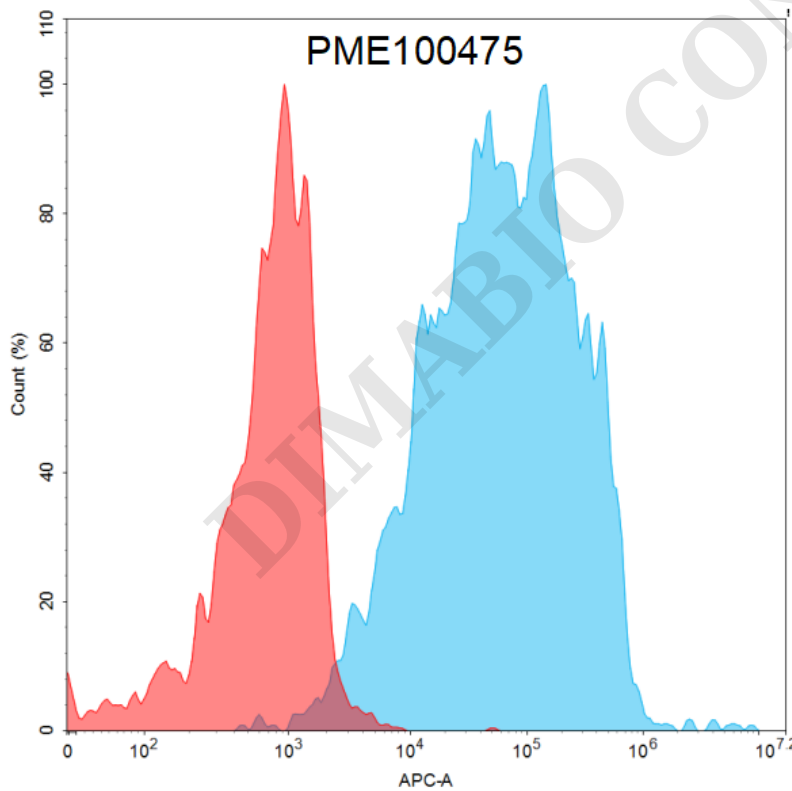


Figure 4. Flow cytometry analysis with 15 µg/mL Human CD27 Protein, hFc tag (PME100475) on HEK293 cells transfected with human CD70 (Blue histogram) or HEK293 transfected with irrelevant protein (Red histogram).

