

PRODUCT INFORMATION

Target	CD36
Synonyms	BDPLT10;CHDS7;FAT;GP3B;GP4;GPIV;PASIV;SCARB3
Description	Recombinant Human CD36 Protein with C-terminal human Fc tag
Delivery	In Stock
Uniprot ID	P16671
Expression Host	HEK293
Tag	C-Human Fc Tag
Molecular Characterization	CD36(Gly30-Asn439) hFc(Glu99-Ala330)
Molecular Weight	The protein has a predicted molecular mass of 72.8 kDa after removal of the signal peptide. The apparent molecular mass of CD36-hFc is approximately 100-130 kDa due to glycosylation.
Purity	The purity of the protein is greater than 95% as determined by SDS-PAGE and Coomassie blue staining.
Formulation & Reconstitution	Lyophilized from sterile PBS, pH 7.4. Normally 5 % - 8% trehalose is added as protectants before lyophilization. Please see Certificate of Analysis for specific instructions of reconstitution.
Storage&Shipping	Store at -20°C to -80°C for 12 months in lyophilized form. After reconstitution, if not intended for use within a month, aliquot and store at -80°C (Avoid repeated freezing and thawing). Lyophilized proteins are shipped at ambient temperature.
Background	The protein encoded by this gene is the fourth major glycoprotein of the platelet surface and serves as a receptor for thrombospondin in platelets and various cell lines. Since thrombospondins are widely distributed proteins involved in a variety of adhesive processes, this protein may have important functions as a cell adhesion molecule. It binds to collagen, thrombospondin, anionic phospholipids and oxidized LDL. It directly mediates cytoadherence of Plasmodium falciparum parasitized erythrocytes and it binds long chain fatty acids and may function in the transport and/or as a regulator of fatty acid transport. Mutations in this gene cause platelet glycoprotein deficiency. Multiple alternatively spliced transcript variants have been found for this gene.
Usage	Research use only
Conjugate	Unconjugated



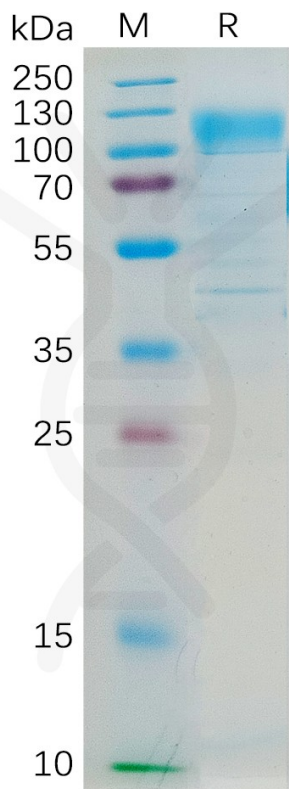


Figure 1. Human CD36 Protein, hFc Tag on SDS-PAGE under reducing condition.

Human CD36,hFc Tagged protein ELISA
0.2 μ g of Human CD36, hFc tagged protein per well

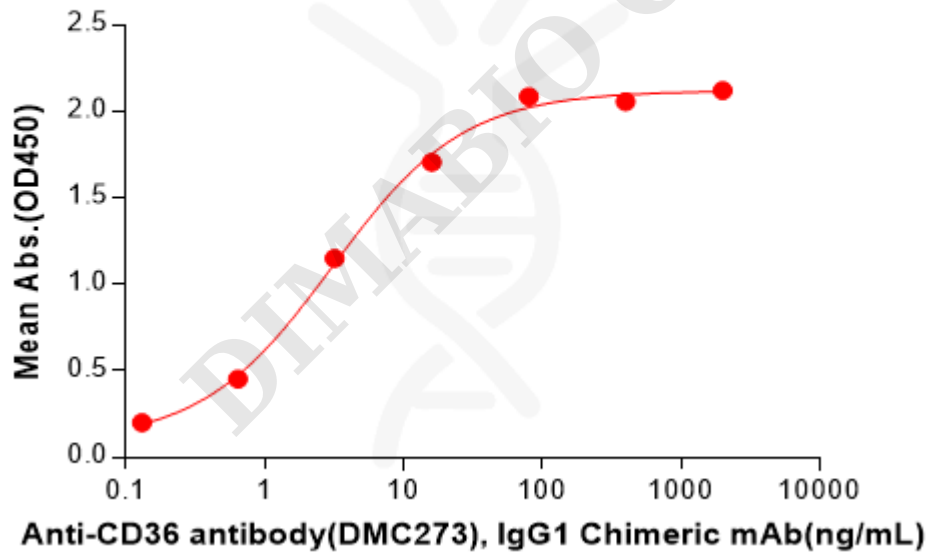


Figure 2. ELISA plate pre-coated by 2 μ g/mL (100 μ L/well) Human CD36 Protein, hFc Tag(PME100187) can bind Anti-CD36 antibody(DMC273), IgG1 Chimeric mAb in a linear range of 0.64-16 ng/mL.

