

## PRODUCT INFORMATION

<b>Target</b>	CD3D and CD3E
<b>Synonyms</b>	T3D; IMD19; CD3DELTA; CD3-DELTA and T3E, TCRE, IMD18, CD3epsilon
<b>Description</b>	Recombinant human CD3D-knob protein with C-terminal 6×His tag and human CD3E-Hole protein with C-Strep tag
<b>Delivery</b>	In Stock
<b>Uniprot ID</b>	P04234 and P07766
<b>Expression Host</b>	HEK293
<b>Tag</b>	C-6×His tag and C-Strep tag
<b>Molecular Characterization</b>	knob CD3D(Phe22-Ala105) 6×His tag Hole CD3E(Asp23-Asp126) Strep tag
<b>Molecular Weight</b>	The protein has a predicted molecular mass of 41.1 kDa and 37.0 kDa after removal of the signal peptide.
<b>Purity</b>	The purity of the protein is greater than 95% as determined by SDS-PAGE and Coomassie blue staining.
<b>Formulation &amp; Reconstitution</b>	Lyophilized from sterile PBS, pH 7.4. Normally 5 % - 8% trehalose is added as protectants before lyophilization. Please see Certificate of Analysis for specific instructions of reconstitution.
<b>Storage&amp;Shipping</b>	Store at -20°C to -80°C for 12 months in lyophilized form. After reconstitution, if not intended for use within a month, aliquot and store at -80°C (Avoid repeated freezing and thawing). Lyophilized proteins are shipped at ambient temperature.
<b>Sterility</b>	Products are supplied non-sterile. For cell culture applications, dilute in appropriate medium and sterile-filter (0.22 µm) prior to use.
<b>Background</b>	T-cell surface glycoprotein CD3 delta & CD3 epsilon chain, also known as CD3D & CD3E or CD3D&CD3E respectively, are single-pass type I membrane proteins. CD3D, together with CD3-epsilon(CD3E) , CD3-gamma and CD3-zeta, and the T-cell receptor alpha/beta and gamma/delta heterodimers, forms the T cell receptor-CD3 complex. T cell receptor-CD3 complex plays an important role in coupling antigen recognition to several intracellular signal-transduction pathways.
<b>Usage</b>	Research use only



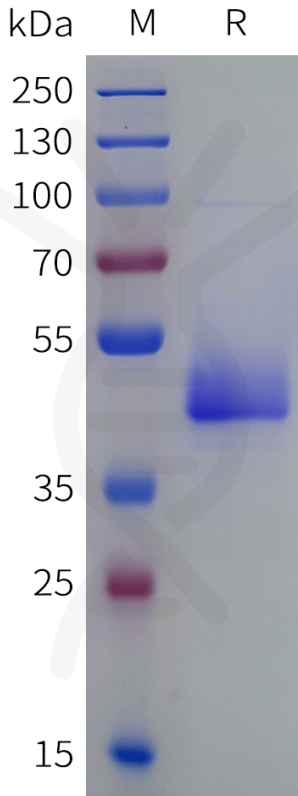


Figure 1. Human CD3D-knob and CD3E-Hole Heterodimer Protein, His Tag and Twin Strep tag on SDS-PAGE under reducing condition.

### Human CD3D-knob and CD3E-Hole Heterodimer, His and Twin Strep Tagged Protein ELISA

0.2  $\mu$ g of Human CD3D-knob and CD3E-Hole Heterodimer, His and Twin Strep tagged Protein per well

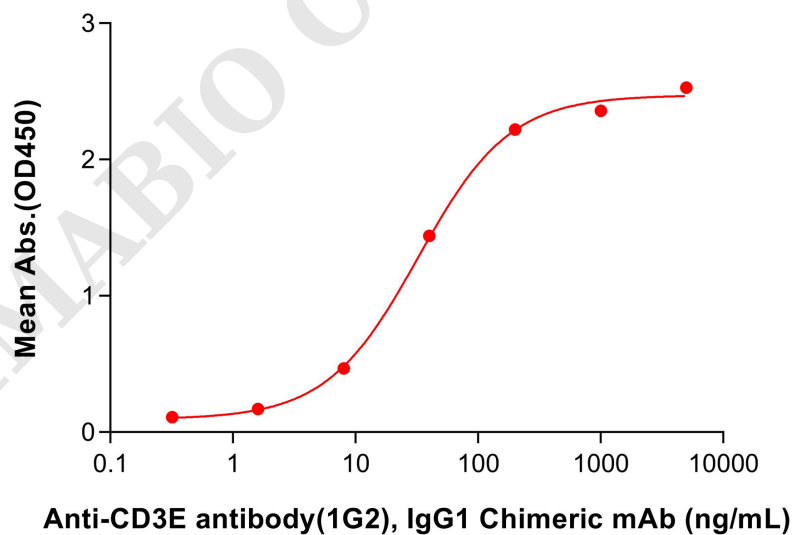


Figure 2. ELISA plate pre-coated by 2  $\mu$ g/mL (100  $\mu$ L/well) Human CD3D-knob and CD3E-Hole Heterodimer Protein, His Tag and Twin Strep Tag (PME101927) can bind Anti-CD3E antibody(1G2), IgG1 Chimeric mAb (DMC101085) in a linear range of 8.0-40 ng/mL.

