

PRODUCT INFORMATION

Target	CD3E and CD3G
Synonyms	T3E, TCRE, IMD18, CD3epsilon and T3G, IMD17, CD3GAMMA, CD3-GAMMA
Description	Recombinant human CD3E-knob protein with C-terminal 6×His tag and human CD3G-Hole protein with C-Strep tag
Delivery	In Stock
Uniprot ID	P07766 and P09693
Expression Host	HEK293
Tag	C-6×His tag and C-Strep tag
Molecular Characterization	knob-CD3E(Asp23-Asp126)+6×His tag Hole-CD3G(Gln23-Ser116)+Strep tag
Molecular Weight	The protein has a predicted molecular mass of 39.2 kDa and 40.0 kDa after removal of the signal peptide.
Purity	The purity of the protein is greater than 95% as determined by SDS-PAGE and Coomassie blue staining.
Formulation & Reconstitution	Lyophilized from sterile PBS, pH 7.4. Normally 5 % - 8% trehalose is added as protectants before lyophilization. Please see Certificate of Analysis for specific instructions of reconstitution.
Storage&Shipping	Store at -20°C to -80°C for 12 months in lyophilized form. After reconstitution, if not intended for use within a month, aliquot and store at -80°C (Avoid repeated freezing and thawing). Lyophilized proteins are shipped at ambient temperature.
Sterility	Products are supplied non-sterile. For cell culture applications, dilute in appropriate medium and sterile-filter (0.22 µm) prior to use.
Background	T-cell surface glycoprotein CD3 delta & CD3 gamma chain, also known as CD3D & CD3G or CD3D&CD3G respectively, are single-pass type I membrane proteins. CD3D, together with CD3-epsilon(CD3E) , CD3-gamma and CD3-zeta, and the T-cell receptor alpha/beta and gamma/delta heterodimers, forms the T cell receptor-CD3 complex. T cell receptor-CD3 complex plays an important role in coupling antigen recognition to several intracellular signal-transduction pathways.
Usage	Research use only



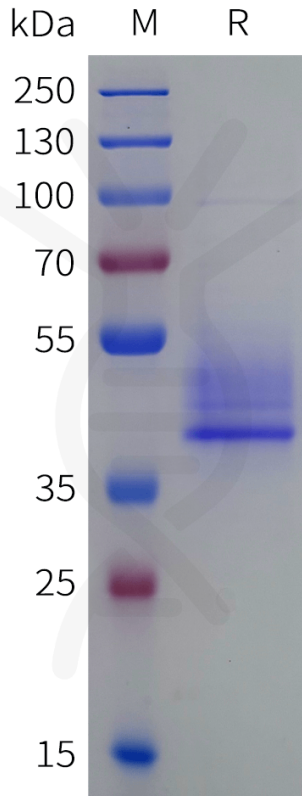


Figure 1. Human CD3E-knob and CD3G-Hole Heterodimer Protein, His Tag and Twin Strep tag on SDS-PAGE under reducing condition.

Human CD3E-knob and CD3G-Hole Heterodimer, His and Twin Strep Tagged Protein ELISA

0.2 μ g of Human CD3E-knob and CD3G-Hole Heterodimer, His and Twin Strep tagged protein per well

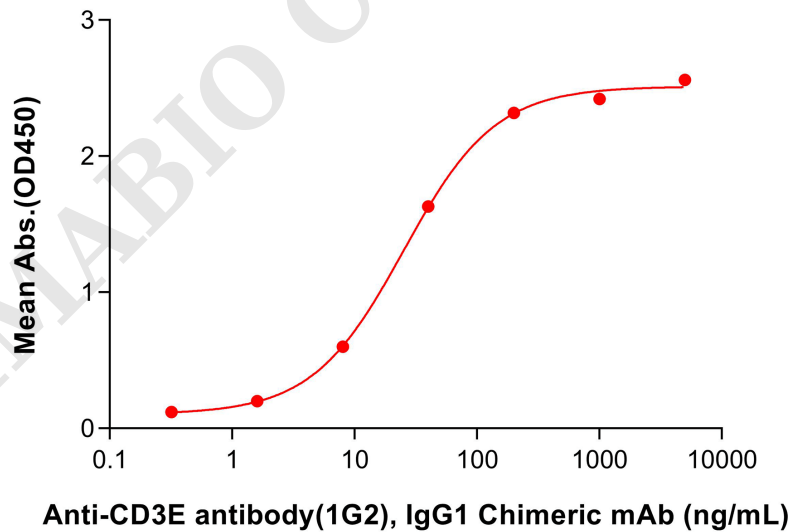


Figure 2. ELISA plate pre-coated by 2 μ g/mL (100 μ L/well) Human CD3E-knob and CD3G-Hole Heterodimer Protein, His Tag and Twin Strep Tag (PME101928) can bind Anti-CD3E antibody(1G2), IgG1 Chimeric mAb (DMC101085) in a linear range of 8.0-40 ng/mL.

