

PRODUCT INFORMATION

Target	CDCP1
Synonyms	CD318, TRASK, SIMA135
Description	Recombinant human CDCP1(30-430) Protein with C-terminal 10×His tag
Delivery	In Stock
Uniprot ID	Q9H5V8
Expression Host	HEK293
Tag	C-10×His tag
Molecular Characterization	CDCP1(Phe30-Leu430) 10×His tag
Molecular Weight	The protein has a predicted molecular mass of 46.4 kDa after removal of the signal peptide.
Purity	The purity of the protein is greater than 85% as determined by SDS-PAGE and Coomassie blue staining.
Formulation & Reconstitution	Lyophilized from sterile PBS, pH 7.4. Normally 5 % - 8% trehalose is added as protectants before lyophilization. Please see Certificate of Analysis for specific instructions of reconstitution.
Storage&Shipping	Store at -20°C to -80°C for 12 months in lyophilized form. After reconstitution, if not intended for use within a month, aliquot and store at -80°C (Avoid repeated freezing and thawing). Lyophilized proteins are shipped at ambient temperature.
Sterility	Products are supplied non-sterile. For cell culture applications, dilute in appropriate medium and sterile-filter (0.22 µm) prior to use.
Background	This gene encodes a transmembrane protein which contains three extracellular CUB domains and acts as a substrate for Src family kinases. The protein plays a role in the tyrosine phosphorylation-dependent regulation of cellular events that are involved in tumor invasion and metastasis. Alternative splicing results in multiple transcript variants of this gene. [provided by RefSeq, May 2013]
Usage	Research use only
Conjugate	Unconjugated



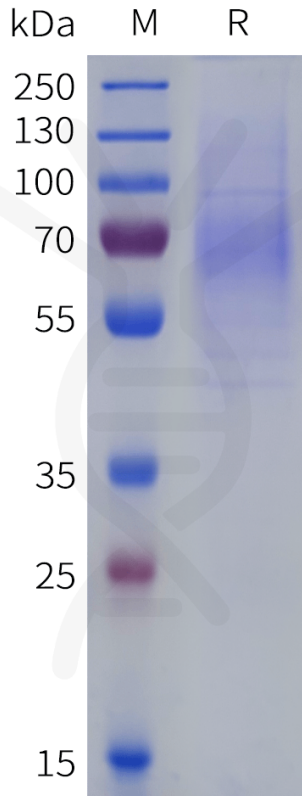


Figure 1. Human CDCP1(30-430) Protein, His Tag on SDS-PAGE under reducing condition.

DIMABIO CONFIDENTIAL

