

PRODUCT INFORMATION

Target	CDH6
Synonyms	CDH6;K-cadherin
Description	Recombinant human CDH6 protein with C-terminal 6×His tag
Delivery	In Stock
Uniprot ID	P55285
Expression Host	HEK293
Tag	C-6×His Tag
Molecular Characterization	CDH6(Thr19-Ala615) 6×His tag
Molecular Weight	The protein has a predicted molecular mass of 67.2 kDa after removal of the signal peptide. The apparent molecular mass of CDH6-His is approximately 70-130 kDa due to glycosylation.
Purity	The purity of the protein is greater than 85% as determined by SDS-PAGE and Coomassie blue staining.
Formulation & Reconstitution	Lyophilized from sterile PBS, pH 7.4. Normally 5 % - 8% trehalose is added as protectants before lyophilization. Please see Certificate of Analysis for specific instructions of reconstitution.
Storage & Shipping	Store at -20°C to -80°C for 12 months in lyophilized form. After reconstitution, if not intended for use within a month, aliquot and store at -80°C (Avoid repeated freezing and thawing). Lyophilized proteins are shipped at ambient temperature.
Background	This gene encodes a member of the cadherin superfamily. Cadherins are membrane glycoproteins that mediate homophilic cell-cell adhesion and play critical roles in cell differentiation and morphogenesis. The encoded protein is a type II cadherin and may play a role in kidney development as well as endometrium and placenta formation. Decreased expression of this gene may be associated with tumor growth and metastasis. [provided by RefSeq, May 2011]
Usage	Research use only
Conjugate	Unconjugated



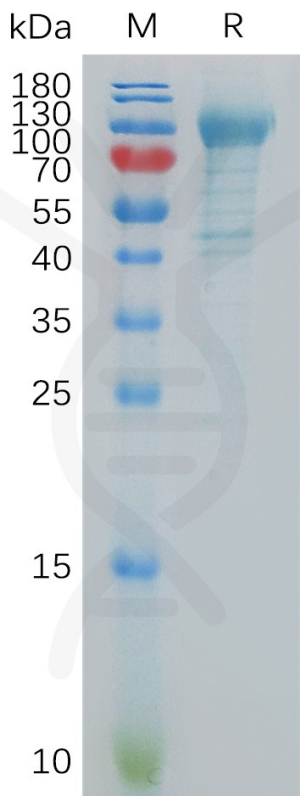


Figure 1. Human CDH6 Protein, His Tag on SDS-PAGE under reducing condition.

Human CDH6, His Tagged protein ELISA
0.2 µg of Human CDH6, His tagged protein per well

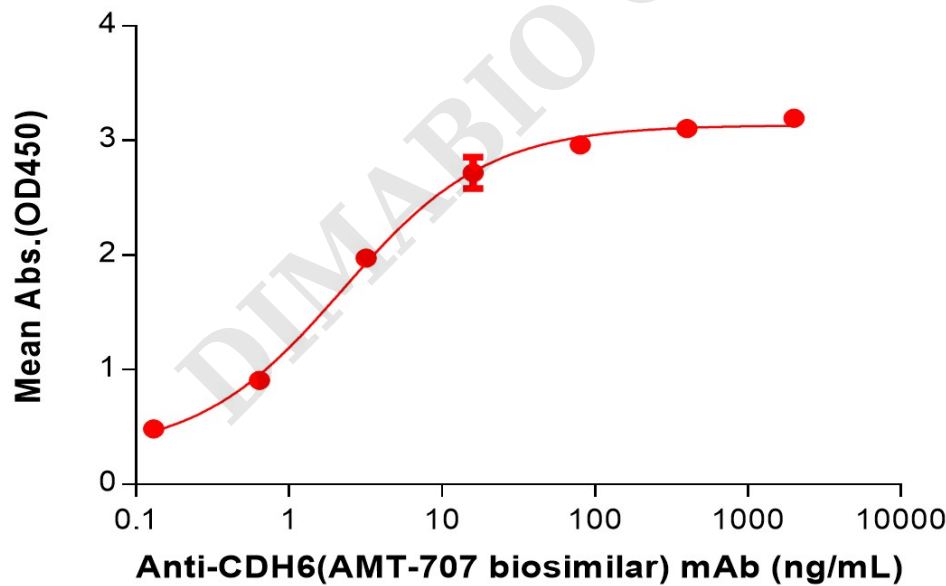


Figure 2. ELISA plate pre-coated by 2 µg/mL (100 µL/well) Human CDH6 Protein, His Tag (PME101111) can bind Anti-CDH6(AMT-707 biosimilar) mAb (BME100234) in a linear range of 0.13-16 ng/mL.



Human CDH6, His Tagged protein ELISA

0.2 μ g of Human CDH6, His tagged protein per well

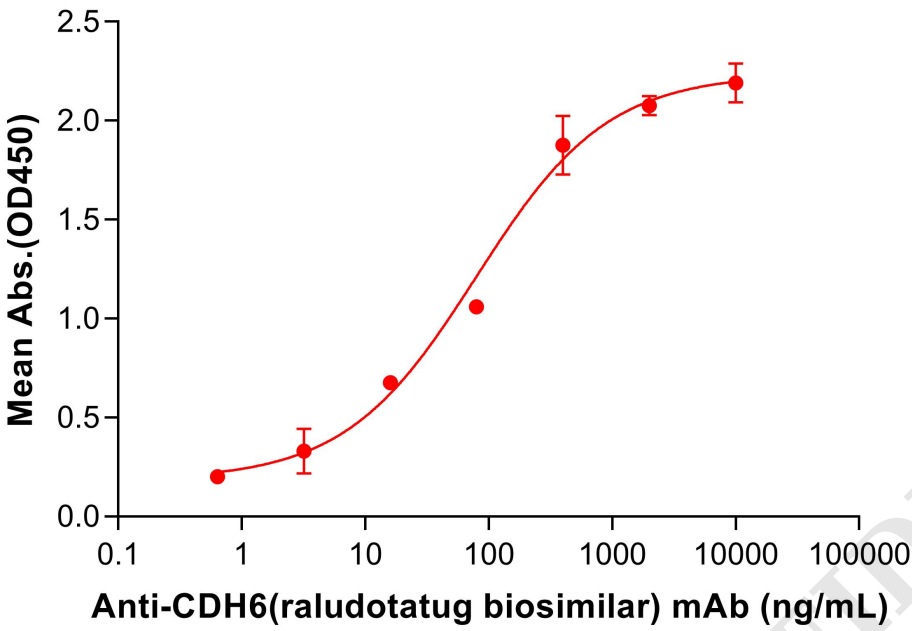


Figure 3. ELISA plate pre-coated by 2 μ g/mL (100 μ L/well) Human CDH6 Protein, His Tag (PME101111) can bind Anti-CDH6(raludotatug biosimilar) mAb (BME100232) in a linear range of 16-400 ng/mL.

