

PRODUCT INFORMATION

Target	CEACAM6
Synonyms	NCA; CEAL; CD66c; NCA-50/90
Description	Recombinant human CEACAM6(233-319) Protein with C-terminal human Fc tag
Delivery	In Stock
Uniprot ID	P40199
Expression Host	HEK293
Tag	C-Human Fc tag
Molecular Characterization	CEACAM6(Val233-Ser319) hFc(Glu99-Ala330)
Molecular Weight	The protein has a predicted molecular mass of 35.6 kDa after removal of the signal peptide. The apparent molecular mass of CEACAM6(233-319)-hFc is approximately 35-70 kDa due to glycosylation.
Purity	The purity of the protein is greater than 95% as determined by SDS-PAGE and Coomassie blue staining.
Formulation & Reconstitution	Lyophilized from sterile PBS, pH 7.4. Normally 5% - 8% trehalose is added as protectants before lyophilization. Please see Certificate of Analysis for specific instructions of reconstitution.
Storage&Shipping	Store at -20°C to -80°C for 12 months in lyophilized form. After reconstitution, if not intended for use within a month, aliquot and store at -80°C (Avoid repeated freezing and thawing). Lyophilized proteins are shipped at ambient temperature.
Sterility	Products are supplied non-sterile. For cell culture applications, dilute in appropriate medium and sterile-filter (0.22 µm) prior to use.
Background	This gene encodes a protein that belongs to the carcinoembryonic antigen (CEA) family whose members are glycosyl phosphatidyl inositol (GPI) anchored cell surface glycoproteins. Members of this family play a role in cell adhesion and are widely used as tumor markers in serum immunoassay determinations of carcinoma. This gene affects the sensitivity of tumor cells to adenovirus infection. The protein encoded by this gene acts as a receptor for adherent-invasive E. coli adhesion to the surface of ileal epithelial cells in patients with Crohn's disease. This gene is clustered with genes and pseudogenes of the cell adhesion molecules subgroup of the CEA family on chromosome 19. [provided by RefSeq, Apr 2014]
Usage	Research use only
Conjugate	Unconjugated



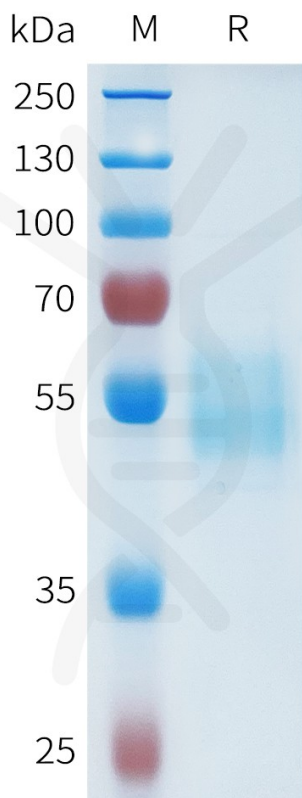


Figure 1. Human CEACAM6(233-319) Protein, hFc Tag on SDS-PAGE under reducing condition.

