

PRODUCT INFORMATION

Tag	C-Single Strep&His Tag
Expression Host	E.coli
Target	CLDN18.2
Description	Human CLDN18.2 cell-free full length protein-Detergent
Synonyms	SFTA5; SFTPJ
Uniprot ID	P56856-2
Protein Families	Transmembrane
Protein Pathways	Cell adhesion molecules (CAMs), Leukocyte transendothelial migration, Tight junction
Molecular Weight	The human CLDN18.2 cell-free full length protein-Detergent has a MW of 30kDa
Delivery	1 week
Formulation & Reconstitution	Liquid, 50mM HEPES, 150mM NaCl, 0.06M, 0.012%CHS, pH7.5
Sterility	Products are supplied non-sterile. For cell culture applications, dilute in appropriate medium and sterile-filter (0.22 μ m) prior to use.
Storage&Shipping	Store at -80°C, Ship on dry ice.
Purity	>80%
Background	<p>The protein encodes a member of the claudin family. Claudins are integral membrane proteins and components of tight junction strands. Tight junction strands serve as a physical barrier to prevent solutes and water from passing freely through the paracellular space between epithelial or endothelial cell sheets, and also play critical roles in maintaining cell polarity and signal transductions. This gene is upregulated in patients with ulcerative colitis and highly overexpressed in infiltrating ductal adenocarcinomas. PKC/MAPK/AP-1 (protein kinase C/mitogen-activated protein kinase/activator protein-1) dependent pathway regulates the expression of this gene in gastric cells. Alternatively spliced transcript variants encoding different isoforms have been identified. [provided by RefSeq, Jun 2010]</p>
Usage	Research use only
Conjugate	Unconjugated



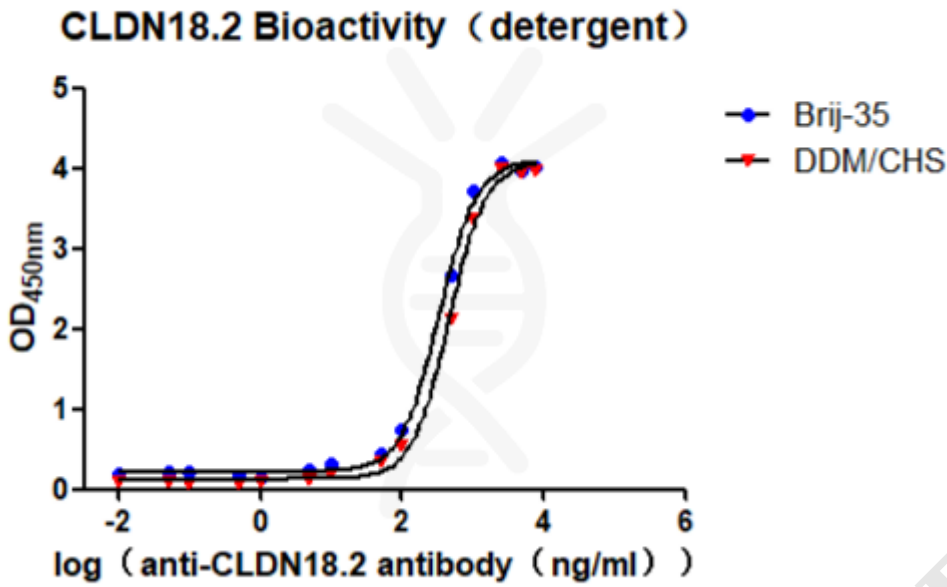


Figure 1. Elisa plates were pre-coated with Single Strep&His Tag CLDN18.2 cell-free-Detergent (0.5 μ g/per well). Serial diluted anti-CLDN18.2 antibody solutions were added, washed, and incubated with secondary antibody before Elisa reading. From above data, the EC₅₀ for anti-CLDN18.2 antibody binding with CLDN18.2 cell-free-Detergent is 457.2 ng/mL.

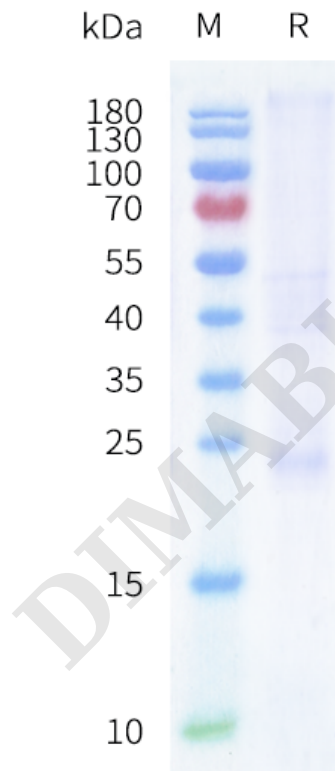


Figure 2. Human CLDN18.2 cell-free-Detergent, C-Single Strep&His Tag on SDS-PAGE.

