

PRODUCT INFORMATION

Target	CLDN3
Synonyms	C7orf1;CPE-R2;CPETR2;HRVP1;RVP1
Description	Recombinant human CLDN3 protein with C-terminal human Fc tag
Delivery	In Stock
Uniprot ID	O15551
Expression Host	HEK293
Tag	C-Human Fc Tag
Molecular Characterization	CLDN3(Arg30-Arg80) hFc(Glu99-Ala330)
Molecular Weight	The protein has a predicted molecular mass of 31.8 kDa after removal of the signal peptide. The apparent molecular mass of CLDN3-hFc is approximately 35-40 kDa due to glycosylation.
Purity	The purity of the protein is greater than 95% as determined by SDS-PAGE and Coomassie blue staining.
Formulation & Reconstitution	Lyophilized from sterile PBS, pH 7.4. Normally 5 % - 8% trehalose is added as protectants before lyophilization. Please see Certificate of Analysis for specific instructions of reconstitution.
Storage & Shipping	Store at -20°C to -80°C for 12 months in lyophilized form. After reconstitution, if not intended for use within a month, aliquot and store at -80°C (Avoid repeated freezing and thawing). Lyophilized proteins are shipped at ambient temperature.
Background	Tight junctions represent one mode of cell-to-cell adhesion in epithelial or endothelial cell sheets, forming continuous seals around cells and serving as a physical barrier to prevent solutes and water from passing freely through the paracellular space. These junctions are comprised of sets of continuous networking strands in the outwardly facing cytoplasmic leaflet, with complementary grooves in the inwardly facing extracytoplasmic leaflet. The protein encoded by this intronless gene, a member of the claudin family, is an integral membrane protein and a component of tight junction strands. It is also a low-affinity receptor for Clostridium perfringens enterotoxin, and shares aa sequence similarity with a putative apoptosis-related protein found in rat. [provided by RefSeq, Jul 2008]
Usage	Research use only
Conjugate	Unconjugated



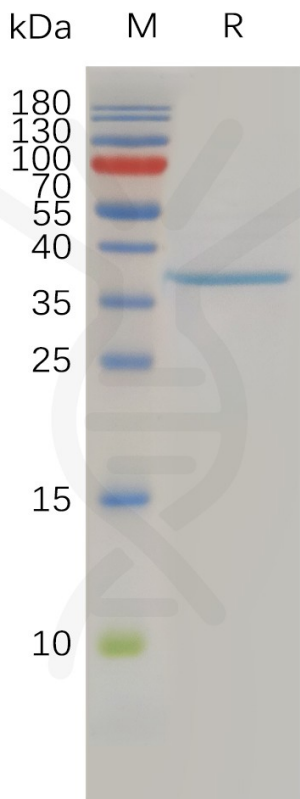


Figure 1. Human CLDN3 Protein, hFc Tag on SDS-PAGE under reducing condition.

