

**PRODUCT INFORMATION**

<b>Target</b>	CPM
<b>Synonyms</b>	CBPM
<b>Description</b>	Recombinant Human CPM Protein with C-terminal 6×His tag
<b>Delivery</b>	In Stock
<b>Uniprot ID</b>	P14384
<b>Expression Host</b>	HEK293
<b>Tag</b>	C-6×His Tag
<b>Molecular Characterization</b>	CPM(Leu18-His422) 6×His tag
<b>Molecular Weight</b>	The protein has a predicted molecular mass of 47.1 kDa after removal of the signal peptide. The apparent molecular mass of CPM-His is approximately 35-55 kDa due to glycosylation.
<b>Purity</b>	The purity of the protein is greater than 85% as determined by SDS-PAGE and Coomassie blue staining.
<b>Formulation &amp; Reconstitution</b>	Lyophilized from sterile PBS, pH 7.4. Normally 5 % - 8% trehalose is added as protectants before lyophilization. Please see Certificate of Analysis for specific instructions of reconstitution.
<b>Storage&amp;Shipping</b>	Store at -20°C to -80°C for 12 months in lyophilized form. After reconstitution, if not intended for use within a month, aliquot and store at -80°C (Avoid repeated freezing and thawing). Lyophilized proteins are shipped at ambient temperature.
<b>Sterility</b>	Products are supplied non-sterile. For cell culture applications, dilute in appropriate medium and sterile-filter (0.22 µm) prior to use.
<b>Background</b>	The protein encoded by this gene is a membrane-bound arginine/lysine carboxypeptidase. Its expression is associated with monocyte to macrophage differentiation. This encoded protein contains hydrophobic regions at the amino and carboxy termini and has 6 potential asparagine-linked glycosylation sites. The active site residues of carboxypeptidases A and B are conserved in this protein. Three alternatively spliced transcript variants encoding the same protein have been described for this gene. [provided by RefSeq, Jul 2008]
<b>Usage</b>	Research use only
<b>Conjugate</b>	Unconjugated



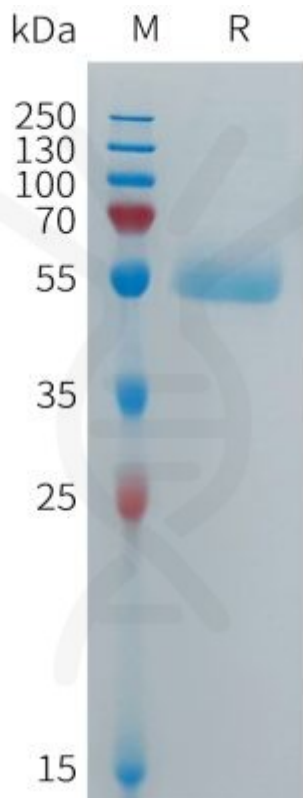


Figure 1. Human CPM Protein, His Tag on SDS-PAGE under reducing condition.

DIMABIO CONFIDENTIAL

