

PRODUCT INFORMATION

Target	CRHR1
Synonyms	CRF1, CRHR, CRF-R, CRFR1, CRF-R1, CRFR-1, CRH-R1, CRHR1L, CRF-R-1, CRH-R-1
Description	Recombinant human CRHR1 Protein with C-terminal human Fc tag
Delivery	In Stock
Uniprot ID	P34998
Expression Host	HEK293
Tag	C-Human Fc tag
Molecular Characterization	CRHR1(Ser24-Lys111) hFc(Glu99-Ala330)
Molecular Weight	The protein has a predicted molecular mass of 35.9 kDa after removal of the signal peptide.
Purity	The purity of the protein is greater than 95% as determined by SDS-PAGE and Coomassie blue staining.
Formulation & Reconstitution	Lyophilized from sterile PBS, pH 7.4. Normally 5 % - 8% trehalose is added as protectants before lyophilization. Please see Certificate of Analysis for specific instructions of reconstitution.
Storage&Shipping	Store at -20°C to -80°C for 12 months in lyophilized form. After reconstitution, if not intended for use within a month, aliquot and store at -80°C (Avoid repeated freezing and thawing). Lyophilized proteins are shipped at ambient temperature.
Sterility	Products are supplied non-sterile. For cell culture applications, dilute in appropriate medium and sterile-filter (0.22 µm) prior to use.
Background	This gene encodes a G-protein coupled receptor that binds neuropeptides of the corticotropin releasing hormone family that are major regulators of the hypothalamic-pituitary-adrenal pathway. The encoded protein is essential for the activation of signal transduction pathways that regulate diverse physiological processes including stress, reproduction, immune response and obesity. Alternative splicing results in multiple transcript variants. Naturally-occurring readthrough transcription between this gene and upstream GenelD:147081 results in transcripts that encode isoforms that share similarity with the products of this gene. [provided by RefSeq, Aug 2016]
Usage	Research use only
Conjugate	Unconjugated



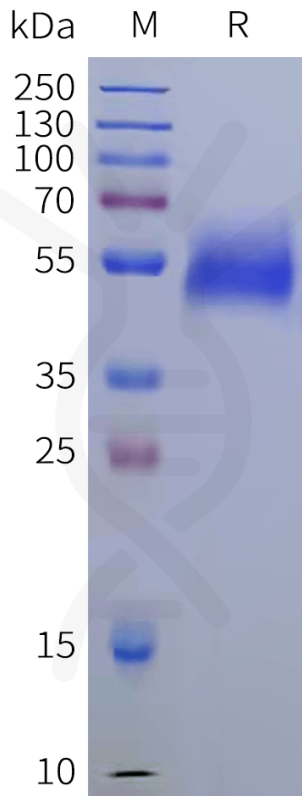


Figure 1. Human CRHR1 Protein, hFc Tag on SDS-PAGE under reducing condition.

DIMABIO CONFIDENTIAL

