

PRODUCT INFORMATION

| | |
|---|--|
| Target | CRP |
| Synonyms | PTX1 |
| Description | Recombinant human CRP Protein with C-terminal 6×His tag |
| Delivery | In Stock |
| Uniprot ID | P02741 |
| Expression Host | HEK293 |
| Tag | C-6×His tag |
| Molecular Characterization | CRP(Gln19-Pro224) 6×His tag |
| Molecular Weight | The protein has a predicted molecular mass of 23.9 kDa after removal of the signal peptide. |
| Purity | The purity of the protein is greater than 85% as determined by SDS-PAGE and Coomassie blue staining. |
| Formulation & Reconstitution | Lyophilized from sterile PBS, pH 7.4. Normally 5 % - 8% trehalose is added as protectants before lyophilization. Please see Certificate of Analysis for specific instructions of reconstitution. |
| Storage&Shipping | Store at -20°C to -80°C for 12 months in lyophilized form. After reconstitution, if not intended for use within a month, aliquot and store at -80°C (Avoid repeated freezing and thawing). Lyophilized proteins are shipped at ambient temperature. |
| Sterility | Products are supplied non-sterile. For cell culture applications, dilute in appropriate medium and sterile-filter (0.22 µm) prior to use. |
| Background | The protein encoded by this gene belongs to the pentraxin family which also includes serum amyloid P component protein and pentraxin 3. Pentraxins are involved in complement activation and amplification via communication with complement initiation pattern recognition molecules, but also complement regulation via recruitment of complement regulators. The encoded protein has a calcium dependent ligand binding domain with a distinctive flattened beta-jellyroll structure. It exists in two forms as either a pentamer in circulation or as a nonsoluble monomer in tissues. It is involved in several host defense related functions based on its ability to recognize foreign pathogens and damaged cells of the host and to initiate their elimination by interacting with humoral and cellular effector systems in the blood. Consequently, the level of this protein in plasma increases greatly during acute phase response to tissue injury, infection, or other inflammatory stimuli. Elevated expression of the encoded protein is associated with severe acute respiratory syndrome coronavirus 2 (SARS-CoV-2) infection. [provided by RefSeq, Aug 2020] |
| Usage | Research use only |
| Conjugate | Unconjugated |



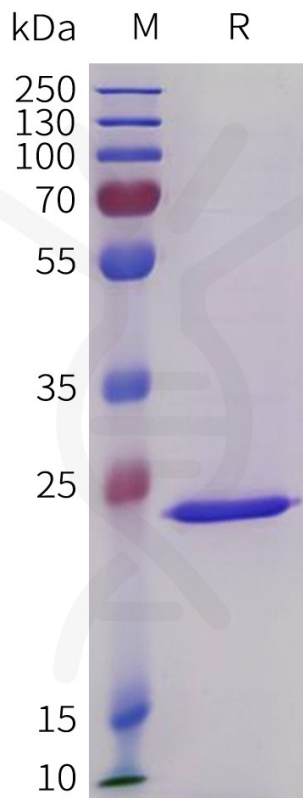


Figure 1. Human CRP Protein, His Tag on SDS-PAGE under reducing condition.

DIMABIO CONFIDENTIAL

