

PRODUCT INFORMATION

Target	CSF1R
Synonyms	FMS; CSFR; FIM2; GPSC; HDLS; C-FMS; CD115; HDLS1; CSF-1R; BANDDOS; M-CSF-R
Description	Recombinant human CSF1R(198-298) Protein with C-terminal human Fc tag
Delivery	In Stock
Uniprot ID	P07333
Expression Host	HEK293
Tag	C-Human Fc tag
Molecular Characterization	CSF1R(Val198-Ser298) hFc(Glu99-Ala330)
Molecular Weight	The protein has a predicted molecular mass of 37.3 kDa after removal of the signal peptide. The apparent molecular mass of CSF1R(198-298)-hFc is approximately 35-55 kDa due to glycosylation.
Purity	The purity of the protein is greater than 95% as determined by SDS-PAGE and Coomassie blue staining.
Formulation & Reconstitution	Lyophilized from sterile PBS, pH 7.4. Normally 5 % - 8% trehalose is added as protectants before lyophilization. Please see Certificate of Analysis for specific instructions of reconstitution.
Storage&Shipping	Store at -20°C to -80°C for 12 months in lyophilized form. After reconstitution, if not intended for use within a month, aliquot and store at -80°C (Avoid repeated freezing and thawing). Lyophilized proteins are shipped at ambient temperature.
Sterility	Products are supplied non-sterile. For cell culture applications, dilute in appropriate medium and sterile-filter (0.22 µm) prior to use.
Background	The protein encoded by this gene is the receptor for colony stimulating factor 1, a cytokine which controls the production, differentiation, and function of macrophages. This receptor mediates most if not all of the biological effects of this cytokine. Ligand binding activates the receptor kinase through a process of oligomerization and transphosphorylation. The encoded protein is a tyrosine kinase transmembrane receptor and member of the CSF1/PDGF receptor family of tyrosine-protein kinases. Mutations in this gene have been associated with a predisposition to myeloid malignancy. The first intron of this gene contains a transcriptionally inactive ribosomal protein L7 processed pseudogene oriented in the opposite direction. Alternative splicing results in multiple transcript variants. Expression of a splice variant from an LTR promoter has been found in Hodgkin lymphoma (HL), HL cell lines and anaplastic large cell lymphoma. [provided by RefSeq, Mar 2017]
Usage	Research use only
Conjugate	Unconjugated



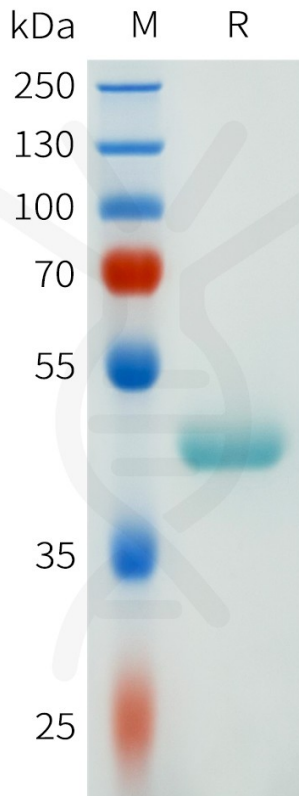


Figure 1. Human CSF1R(198-298) Protein, hFc Tag on SDS-PAGE under reducing condition.

DIMABIO CONFIDENTIAL

