

PRODUCT INFORMATION

Target	DLL1
Synonyms	DL1; Delta; DELTA1; NEDBAS
Description	Recombinant human DLL1 Protein with C-terminal 6×His tag
Delivery	In Stock
Uniprot ID	O00548
Expression Host	HEK293
Tag	C-6×His tag
Molecular Characterization	DLL1(Gln18-Gly540) 6×His tag
Molecular Weight	The protein has a predicted molecular mass of 57.3 kDa after removal of the signal peptide. The apparent molecular mass of DLL1-His is approximately 55-70 kDa due to glycosylation.
Purity	The purity of the protein is greater than 85% as determined by SDS-PAGE and Coomassie blue staining.
Formulation & Reconstitution	Lyophilized from sterile PBS, pH 7.4. Normally 5 % - 8% trehalose is added as protectants before lyophilization. Please see Certificate of Analysis for specific instructions of reconstitution.
Storage&Shipping	Store at -20°C to -80°C for 12 months in lyophilized form. After reconstitution, if not intended for use within a month, aliquot and store at -80°C (Avoid repeated freezing and thawing). Lyophilized proteins are shipped at ambient temperature.
Sterility	Products are supplied non-sterile. For cell culture applications, dilute in appropriate medium and sterile-filter (0.22 µm) prior to use.
Background	DLL1 is a human homolog of the Notch Delta ligand and is a member of the delta/serrate/jagged family. It plays a role in mediating cell fate decisions during hematopoiesis. It may play a role in cell-to-cell communication. [provided by RefSeq, Jul 2008]
Usage	Research use only
Conjugate	Unconjugated



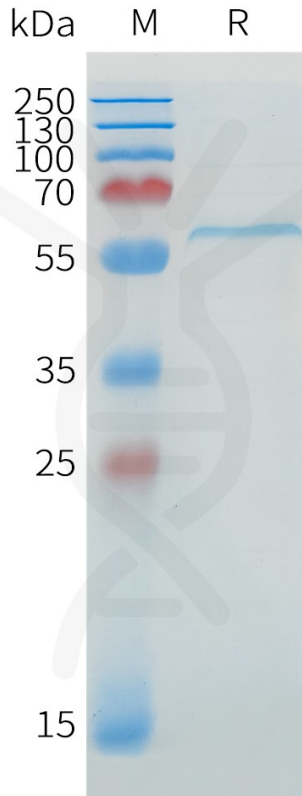


Figure 1. Human DLL1 Protein, His Tag on SDS-PAGE under reducing condition.

DIMABIO CONFIDENTIAL

