

PRODUCT INFORMATION

Target	FCRL1
Synonyms	FCRH1; IFGP1; IRTA5; CD307a
Description	Recombinant human FCRL1 Protein with C-terminal human Fc tag
Delivery	In Stock
Uniprot ID	Q96LA6
Expression Host	HEK293
Tag	C-Human Fc tag
Molecular Characterization	FCRL1(Ala17-Asn303) hFc(Glu99-Ala330)
Molecular Weight	The protein has a predicted molecular mass of 57.3 kDa after removal of the signal peptide. The apparent molecular mass of FCRL1-hFc is approximately 55-70 kDa due to glycosylation.
Purity	The purity of the protein is greater than 95% as determined by SDS-PAGE and Coomassie blue staining.
Formulation & Reconstitution	Lyophilized from sterile PBS, pH 7.4. Normally 5 % - 8% trehalose is added as protectants before lyophilization. Please see Certificate of Analysis for specific instructions of reconstitution.
Storage & Shipping	Store at -20°C to -80°C for 12 months in lyophilized form. After reconstitution, if not intended for use within a month, aliquot and store at -80°C (Avoid repeated freezing and thawing). Lyophilized proteins are shipped at ambient temperature.
Background	This gene encodes a member of the immunoglobulin receptor superfamily and is one of several Fc receptor-like glycoproteins clustered on the long arm of chromosome 1. The encoded protein contains three extracellular C2-like immunoglobulin domains, a transmembrane domain and a cytoplasmic domain with two immunoreceptor-tyrosine activation motifs. This protein may play a role in the regulation of cancer cell growth. Alternative splicing results in multiple transcript variants. [provided by RefSeq, Apr 2009]
Usage	Research use only
Conjugate	Unconjugated



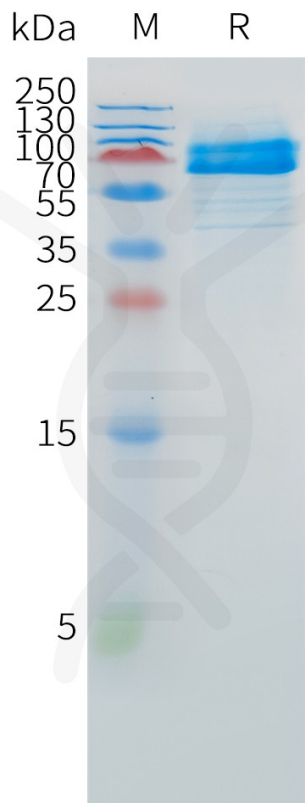


Figure 1. Human FCRL1 Protein, hFc Tag on SDS-PAGE under reducing condition.

