

PRODUCT INFORMATION

Target	GDNF
Synonyms	ATF;ATF1;ATF2;HFB1-GDNF;HSCR3
Description	Recombinant Human GDNF with C-terminal human Fc tag
Delivery	In Stock
Uniprot ID	P39905
Expression Host	HEK293
Tag	C-Human Fc Tag
Molecular Characterization	GDNF(Ser78-Ile211) hFc(Glu99-Ala330)
Molecular Weight	The protein has a predicted molecular mass of 41.2 kDa after removal of the signal peptide. The apparent molecular mass of GDNF-hFc is approximately 55-70 kDa due to glycosylation.
Purity	The purity of the protein is greater than 95% as determined by SDS-PAGE and Coomassie blue staining.
Formulation & Reconstitution	Lyophilized from sterile PBS, pH 7.4. Normally 5 % - 8% trehalose is added as protectants before lyophilization. Please see Certificate of Analysis for specific instructions of reconstitution.
Storage&Shipping	Store at -20°C to -80°C for 12 months in lyophilized form. After reconstitution, if not intended for use within a month, aliquot and store at -80°C (Avoid repeated freezing and thawing). Lyophilized proteins are shipped at ambient temperature.
Background	This gene encodes a secreted ligand of the TGF-beta (transforming growth factor-beta) superfamily of proteins. Ligands of this family bind various TGF-beta receptors leading to recruitment and activation of SMAD family transcription factors that regulate gene expression. The encoded preproprotein is proteolytically processed to generate each subunit of the disulfide-linked homodimer. The recombinant form of this protein, a highly conserved neurotrophic factor, was shown to promote the survival and differentiation of dopaminergic neurons in culture, and was able to prevent apoptosis of motor neurons induced by axotomy. This protein is a ligand for the product of the RET (rearranged during transfection) protooncogene. Mutations in this gene may be associated with Hirschsprung disease and Tourette syndrome. This gene encodes multiple protein isoforms that may undergo similar proteolytic processing. [provided by RefSeq, Aug 2016]
Usage	Research use only
Conjugate	Unconjugated



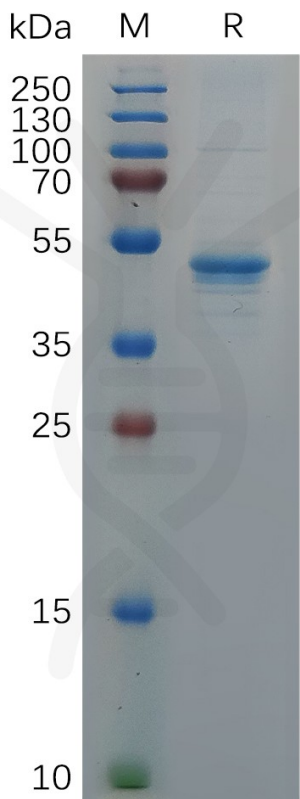


Figure 1. Human FOLR2 Protein, hFc Tag on SDS-PAGE under reducing condition.

