

**PRODUCT INFORMATION**

<b>Target</b>	GPA33
<b>Synonyms</b>	A33
<b>Description</b>	Recombinant human GPA33(135-235) Protein with C-terminal human Fc tag
<b>Delivery</b>	In Stock
<b>Uniprot ID</b>	Q99795
<b>Expression Host</b>	HEK293
<b>Tag</b>	C-Human Fc tag
<b>Molecular Characterization</b>	GPA33(Leu135-Val235) hFc(Glu99-Ala330)
<b>Molecular Weight</b>	The protein has a predicted molecular mass of 37.1 kDa after removal of the signal peptide. The apparent molecular mass of GPA33(135-235)-hFc is approximately 35-55 kDa due to glycosylation.
<b>Purity</b>	The purity of the protein is greater than 95% as determined by SDS-PAGE and Coomassie blue staining.
<b>Formulation &amp; Reconstitution</b>	Lyophilized from sterile PBS, pH 7.4. Normally 5% - 8% trehalose is added as protectants before lyophilization. Please see Certificate of Analysis for specific instructions of reconstitution.
<b>Storage&amp;Shipping</b>	Store at -20°C to -80°C for 12 months in lyophilized form. After reconstitution, if not intended for use within a month, aliquot and store at -80°C (Avoid repeated freezing and thawing). Lyophilized proteins are shipped at ambient temperature.
<b>Sterility</b>	Products are supplied non-sterile. For cell culture applications, dilute in appropriate medium and sterile-filter (0.22 µm) prior to use.
<b>Background</b>	The glycoprotein encoded by this gene is a cell surface antigen that is expressed in greater than 95% of human colon cancers. The open reading frame encodes a 319-amino acid polypeptide having a putative secretory signal sequence and 3 potential glycosylation sites. The predicted mature protein has a 213-amino acid extracellular region, a single transmembrane domain, and a 62-amino acid intracellular tail. The sequence of the extracellular region contains 2 domains characteristic of the CD2 subgroup of the immunoglobulin (Ig) superfamily. [provided by RefSeq, Jul 2008]
<b>Usage</b>	Research use only
<b>Conjugate</b>	Unconjugated



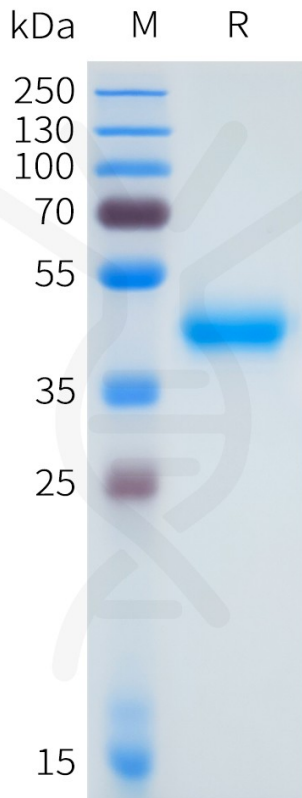


Figure 1. Human GPA33(135-235) Protein, hFc Tag on SDS-PAGE under reducing condition.

