

PRODUCT INFORMATION

Target	GPC3
Synonyms	DGSX;GTR2-2;MXR7;OCI-5;SDYS;SGB;SGBS;SGBS1
Description	Recombinant Human GPC3 Protein with N-terminal Human Fc tag
Delivery	In Stock
Uniprot ID	P51654
Expression Host	HEK293
Tag	N-Human Fc Tag
Molecular Characterization	hFc(Glu99-Ala330) GPC3(Asp511-Ser560)
Molecular Weight	The protein has a predicted molecular mass of 43.3 kDa after removal of the signal peptide.
Purity	The purity of the protein is greater than 95% as determined by SDS-PAGE and Coomassie blue staining.
Formulation & Reconstitution	Lyophilized from sterile PBS, pH 7.4. Normally 5% - 8% trehalose is added as protectants before lyophilization. Please see Certificate of Analysis for specific instructions of reconstitution.
Storage&Shipping	Store at -20°C to -80°C for 12 months in lyophilized form. After reconstitution, if not intended for use within a month, aliquot and store at -80°C (Avoid repeated freezing and thawing). Lyophilized proteins are shipped at ambient temperature.
Background	Cell surface heparan sulfate proteoglycans are composed of a membrane-associated protein core substituted with a variable number of heparan sulfate chains. Members of the glypican-related integral membrane proteoglycan family (GRIPs) contain a core protein anchored to the cytoplasmic membrane via a glycosyl phosphatidylinositol linkage. These proteins may play a role in the control of cell division and growth regulation. The protein encoded by this gene can bind to and inhibit the dipeptidyl peptidase activity of CD26, and it can induce apoptosis in certain cell types. Deletion mutations in this gene are associated with Simpson-Golabi-Behmel syndrome, also known as Simpson dysmorphia syndrome. Alternative splicing results in multiple transcript variants. [provided by RefSeq, Sep 2009] References [1] Fu Ying,Urban Daniel J,Nani Roger R et al. Glypican-3-Specific Antibody Drug Conjugates Targeting Hepatocellular Carcinoma.[J] .Hepatology, 2019, 70: 563-576. Zhang Yi-Fan,Ho Mitchell,Humanization of high-affinity antibodies targeting glypican-3 in hepatocellular carcinoma.[J] .Sci Rep, 2016, 6: 33878.
Usage	Research use only
Conjugate	Unconjugated



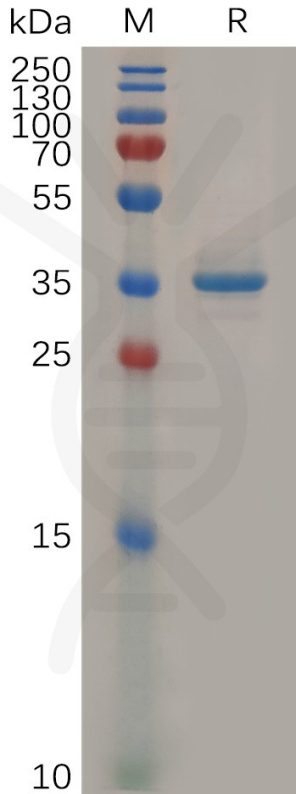


Figure 1. Human GPC3 Protein, hFc Tag on SDS-PAGE under reducing condition.

Human GPC3, hFc tagged protein ELISA

0.1 μ g of Human GPC3, hFc tagged protein per well

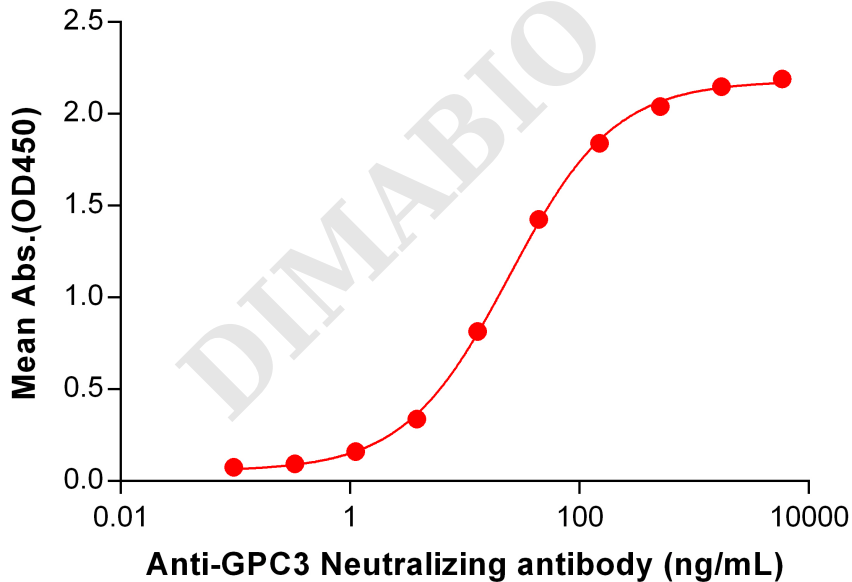


Figure 2. ELISA plate pre-coated by 1 μ g/mL (100 μ L/well) Human GPC3 Protein, hFc Tag (PME100113) can bind Anti-GPC3 Neutralizing antibody BME100083 in a linear range of 1.12-508.85 ng/mL.



Human GPC3, hFc tagged protein ELISA

0.2 μ g of Human GPC3, hFc tagged protein per well

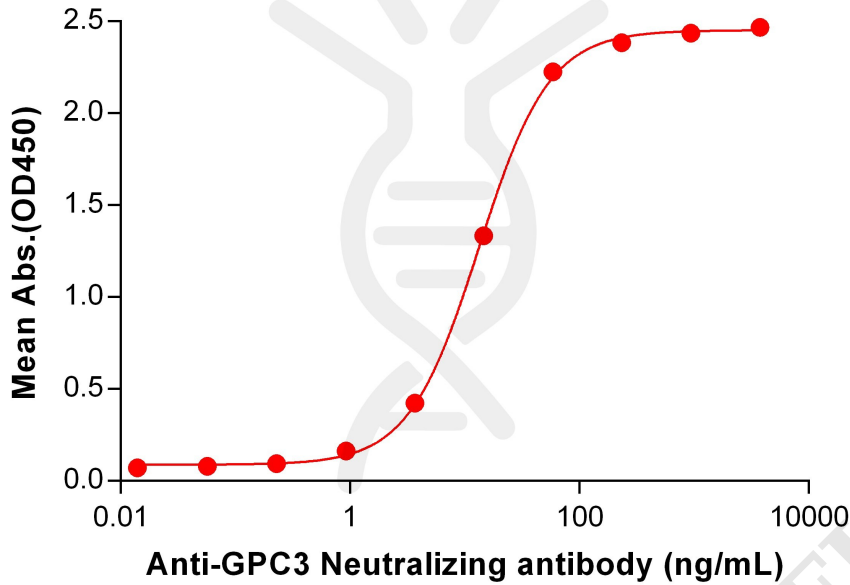


Figure 3. ELISA plate pre-coated by 2 μ g/mL (100 μ L/well) Human GPC3 Protein, hFc Tag (PME100113) can bind Anti-GPC3 Neutralizing antibody BME100147 in a linear range of 0.92-58.59 ng/mL.

