

PRODUCT INFORMATION

Target	GPR37
Synonyms	PAELR; EDNRBL; hET(B)R-LP
Description	Recombinant human GPR37 Protein with C-terminal 10×His tag
Delivery	In Stock
Uniprot ID	O15354
Expression Host	HEK293
Tag	C-10×His tag
Molecular Characterization	GPR37(Leu28-Tyr262) 10×His tag
Molecular Weight	The protein has a predicted molecular mass of 26.2 kDa after removal of the signal peptide.
Purity	The purity of the protein is greater than 85% as determined by SDS-PAGE and Coomassie blue staining.
Formulation & Reconstitution	Lyophilized from sterile PBS, pH 7.4. Normally 5 % - 8% trehalose is added as protectants before lyophilization. Please see Certificate of Analysis for specific instructions of reconstitution.
Storage&Shipping	Store at -20°C to -80°C for 12 months in lyophilized form. After reconstitution, if not intended for use within a month, aliquot and store at -80°C (Avoid repeated freezing and thawing). Lyophilized proteins are shipped at ambient temperature.
Background	This gene is a member of the G protein-coupled receptor family. The encoded protein contains seven transmembrane domains and is found in cell and endoplasmic reticulum membranes. G protein-coupled receptors are involved in translating outside signals into G protein mediated intracellular effects. This gene product interacts with Parkin and is involved in juvenile Parkinson disease. [provided by RefSeq, Oct 2012]
Usage	Research use only
Conjugate	Unconjugated



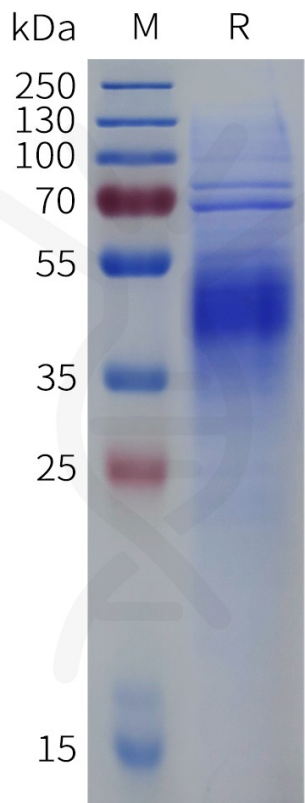


Figure 1. Human GPR37 Protein, His Tag on SDS-PAGE under reducing condition.

