

PRODUCT INFORMATION

| | |
|------------------------------|---|
| Target | GPR56 |
| Synonyms | BFPP;BPPR;GPR56;TM7LN4;TM7XN1 |
| Description | Recombinant Human GPR56 Protein with C-terminal 6×His tag |
| Delivery | In Stock |
| Uniprot ID | Q9Y653 |
| Expression Host | HEK293 |
| Tag | C-6×His Tag |
| Molecular Characterization | GPR56(Arg26-Tyr402) 6×His tag |
| Molecular Weight | The protein has a predicted molecular mass of 43.6 kDa after removal of the signal peptide. The apparent molecular mass of GPR56-His is approximately 55-70 kDa due to glycosylation. |
| Purity | The purity of the protein is greater than 85% as determined by SDS-PAGE and Coomassie blue staining. |
| Formulation & Reconstitution | Lyophilized from sterile PBS, pH 7.4. Normally 5 % - 8% trehalose is added as protectants before lyophilization. Please see Certificate of Analysis for specific instructions of reconstitution. |
| Storage&Shipping | Store at -20°C to -80°C for 12 months in lyophilized form. After reconstitution, if not intended for use within a month, aliquot and store at -80°C (Avoid repeated freezing and thawing). Lyophilized proteins are shipped at ambient temperature. |
| Background | This gene encodes a member of the G protein-coupled receptor family and regulates brain cortical patterning. The encoded protein binds specifically to transglutaminase 2, a component of tissue and tumor stroma implicated as an inhibitor of tumor progression. Mutations in this gene are associated with a brain malformation known as bilateral frontoparietal polymicrogyria. Alternative splicing results in multiple transcript variants. [provided by RefSeq, Feb 2014] |
| Usage | Research use only |
| Conjugate | Unconjugated |



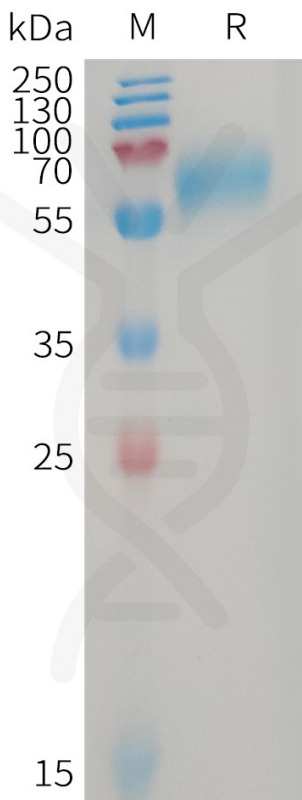


Figure 1. Human GPR56 Protein, His Tag on SDS-PAGE under reducing condition.

Human GPR56, His Tagged protein ELISA
0.2 µg of Human GPR56, His tagged protein per well

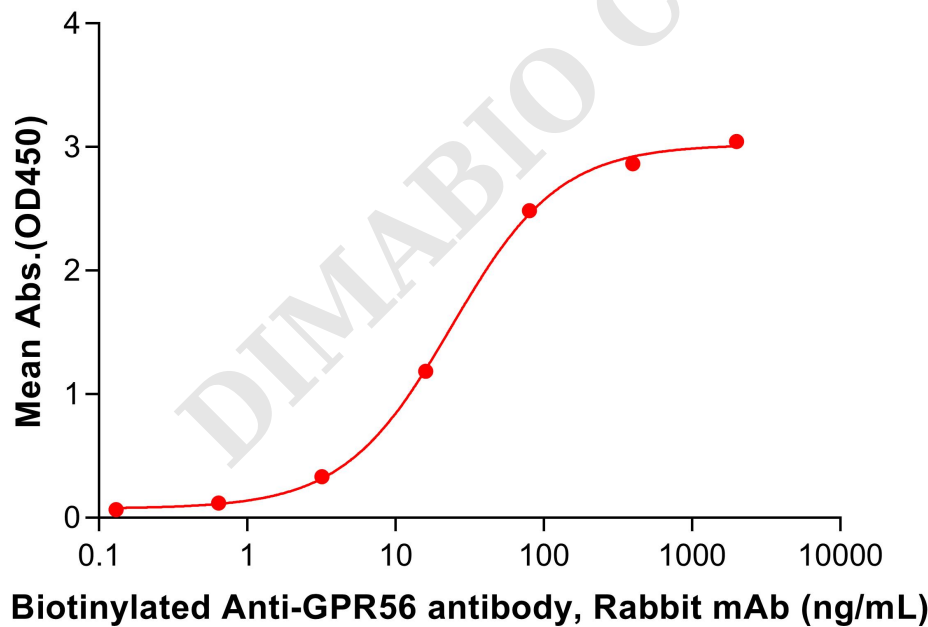


Figure 2. ELISA plate pre-coated by 2 µg/mL (100 µL/well) Human GPR56 Protein, His Tag (PME101228) can bind Biotinylated Anti-GPR56 antibody, Rabbit mAb (DME101183B) in a linear range of 3.2-80 ng/mL.

