

PRODUCT INFORMATION

Target	HVEM
Synonyms	ATAR;CD270;HVEA;HVEM;LIGHTR;TR2
Description	Recombinant Human HVEM Protein with C-terminal 6×His tag
Delivery	In Stock
Uniprot ID	Q92956
Expression Host	HEK293
Tag	C-6×His Tag
Molecular Characterization	HVEM(Leu39-Val202) 6×His tag
Molecular Weight	The protein has a predicted molecular mass of 18.2 kDa after removal of the signal peptide. The apparent molecular mass of HVEM-His is approximately 25-55 kDa due to glycosylation.
Purity	The purity of the protein is greater than 95% as determined by SDS-PAGE and Coomassie blue staining.
Formulation & Reconstitution	Lyophilized from sterile PBS, pH 7.4. Normally 5% - 8% trehalose is added as protectants before lyophilization. Please see Certificate of Analysis for specific instructions of reconstitution.
Storage&Shipping	Store at -20°C to -80°C for 12 months in lyophilized form. After reconstitution, if not intended for use within a month, aliquot and store at -80°C (Avoid repeated freezing and thawing). Lyophilized proteins are shipped at ambient temperature.
Sterility	Products are supplied non-sterile. For cell culture applications, dilute in appropriate medium and sterile-filter (0.22 µm) prior to use.
Background	This gene encodes a member of the TNF (tumor necrosis factor) receptor superfamily. The encoded protein functions in signal transduction pathways that activate inflammatory and inhibitory T-cell immune response. It binds herpes simplex virus (HSV) viral envelope glycoprotein D (gD), mediating its entry into cells. Alternative splicing results in multiple transcript variants.
Usage	Research use only
Conjugate	Unconjugated



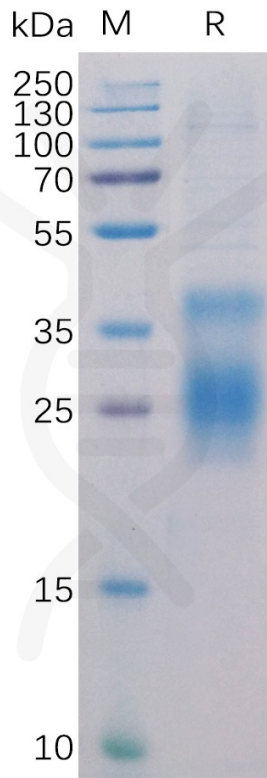


Figure 1. Human HVEM Protein, His Tag on SDS-PAGE under reducing condition.

Human HVEM, His Tagged protein ELISA

0.2 µg of HVEM, His Tagged protein per well

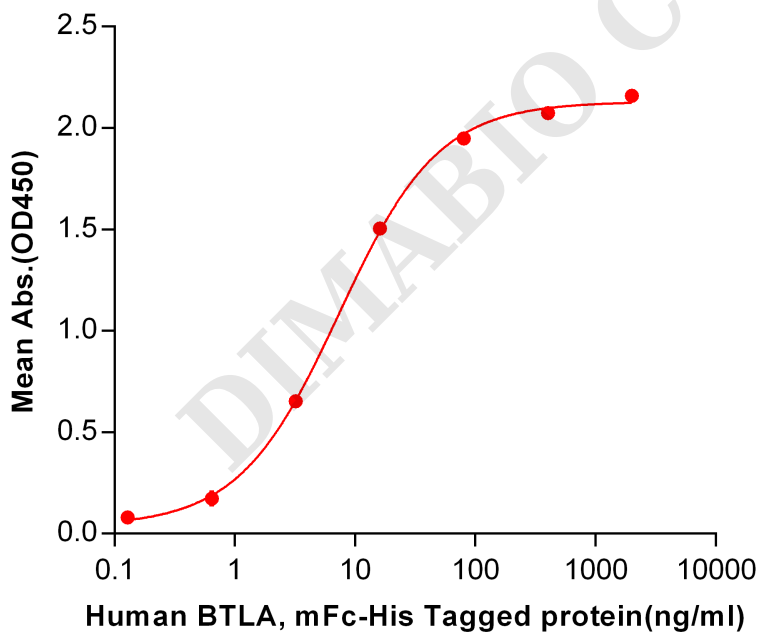


Figure 2. ELISA plate pre-coated by 2 µg/ml (100 µl/well) Human HVEM, His tagged protein (PME100273) can bind Human BTLA, mFc-His tagged protein PME100048 in a linear range of 0.64-80 ng/ml.



Human HVEM, His Tagged protein ELISA

0.2 μ g of HVEM, His Tagged protein per well

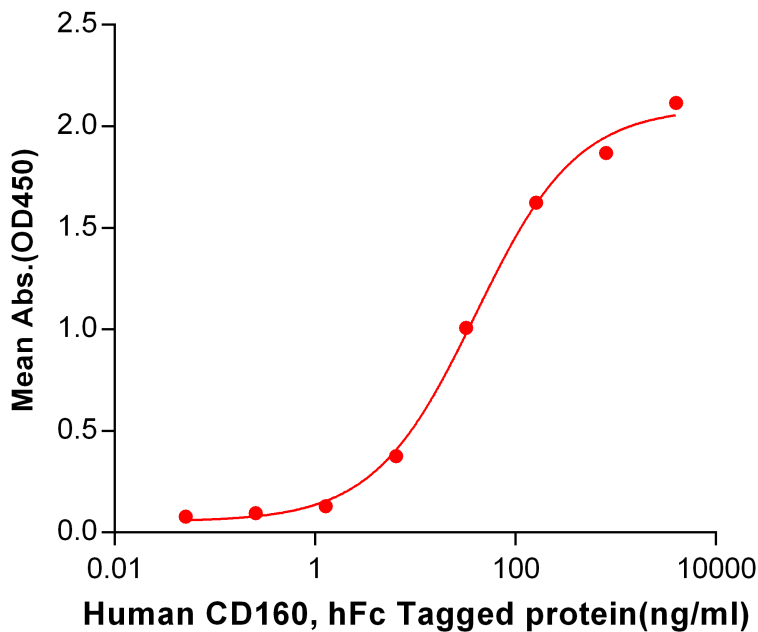


Figure 3. ELISA plate pre-coated by 2 μ g/ml (100 μ l/well) Human HVEM, His tagged protein (PME100273) can bind Human CD160,hFc tagged protein PME100055 in a linear range of 1.28-160 ng/ml.

Human HVEM, His Tagged protein ELISA

0.2 μ g of Human HVEM, His Tagged protein per well

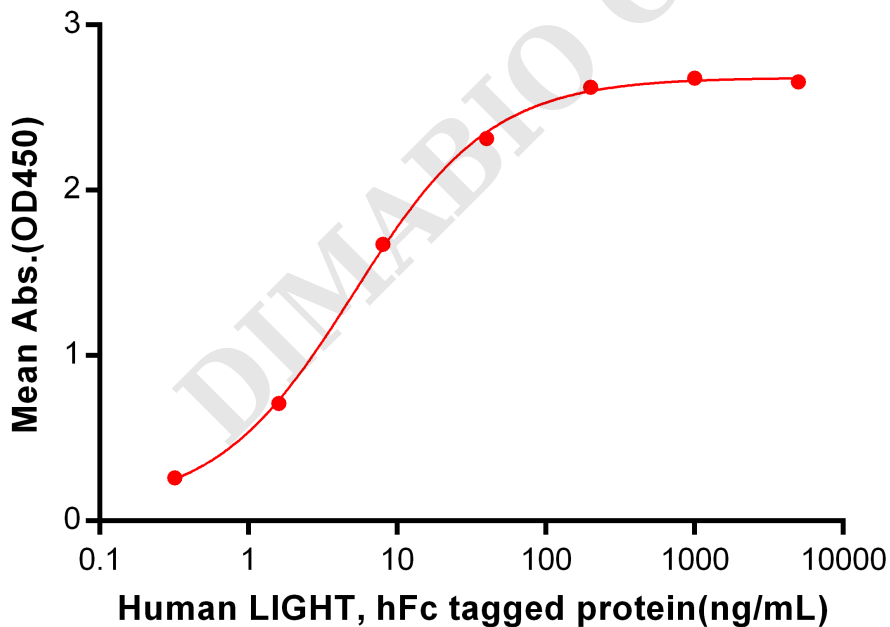


Figure 4. ELISA plate pre-coated by 2 μ g/ml (100 μ l/well) Human HVEM, His tagged protein (PME100273) can bind Human LIGHT, hFc tagged protein PME100049 in a linear range of 0.32-40 ng/ml.



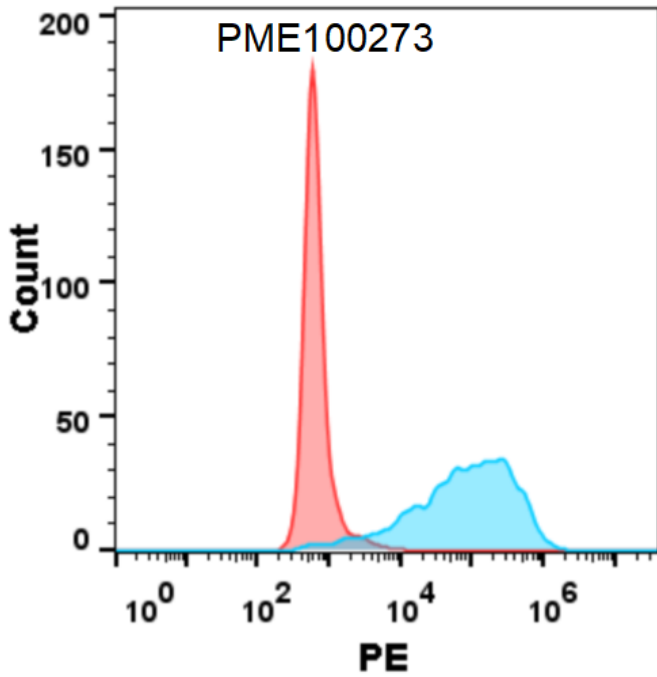


Figure 5. Flow cytometry analysis with 15 µg/mL Human HVEM Protein, His tag (PME100273) on HEK293 cells transfected with human BTLA (Blue histogram) or HEK293 transfected with irrelevant protein (Red histogram).

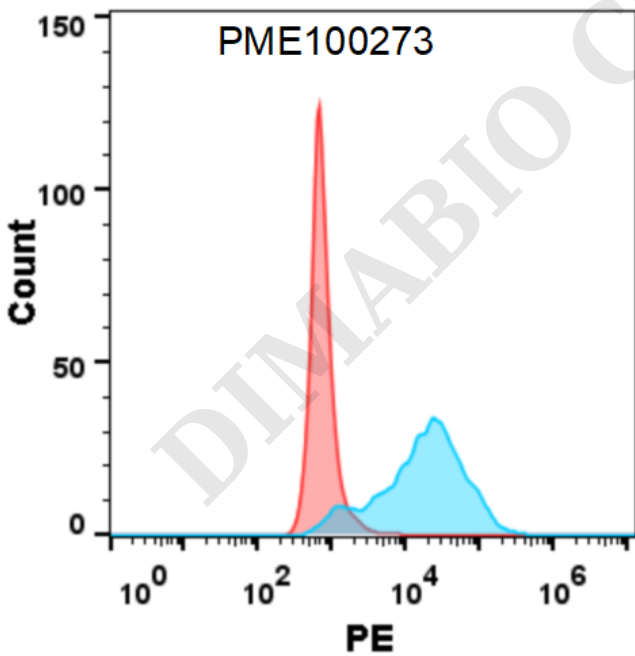


Figure 6. Flow cytometry analysis with 15 µg/mL Human HVEM Protein, His tag (PME100273) on HEK293 cells transfected with human LIGHT (Blue histogram) or HEK293 transfected with irrelevant protein (Red histogram).

