

PRODUCT INFORMATION

Target	IGF-I
Synonyms	Insulin-Like Growth Factor I;IGF-I;Mechano Growth Factor;MGF;Somatomedin-C;IGF1;IBP1
Description	Recombinant Human Insulin-like Growth Factor I(4-70) is produced by our E.coli expression system and the target gene encoding Thr52-Ala118 is expressed.
Delivery	In Stock
Uniprot ID	P05019
Expression Host	E.coli
Tag	
Molecular Characterization	Not available
Molecular Weight	7.3 KDa
Purity	Greater than 95% as determined by reducing SDS-PAGE.
Formulation & Reconstitution	Lyophilized from a 0.2 μ m filtered solution of 20mM NaAc-HAc, pH 4.5.
Storage&Shipping	Store at -20°C to -80°C for 12 months in lyophilized form. After reconstitution, if not intended for use within a month, aliquot and store at -80°C (Avoid repeated freezing and thawing). Lyophilized proteins are shipped at ambient temperature.
Sterility	Products are supplied non-sterile. For cell culture applications, dilute in appropriate medium and sterile-filter (0.22 μ m) prior to use.
Background	Insulin-like growth factor I (IGF1) belongs to the family of insulin-like growth factors that are structurally homologous to proinsulin. Mature IGFs are generated by proteolytic processing of inactive precursor protein containing N-terminal and C-terminal propeptide regions. Mature human IGF-I consisting of 70 amino acids with 94% identity with mouse IGF1 and exhibits cross-species activity. IGF1 binds IGF-1R, IGF-2R, and the insulin receptor and plays a key role in cell cycle progression, cell proliferation and tumor progression. IGF1 expression is regulated by growth hormone.
Usage	Research use only
Conjugate	Unconjugated



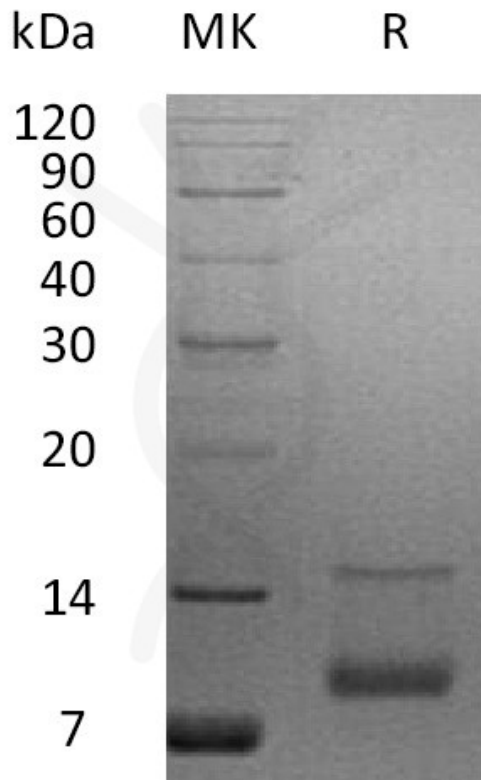


Figure 1. Greater than 95% as determined by reducing SDS-PAGE.

