

PRODUCT INFORMATION

Target	IL15 and IL15RA
Synonyms	IL-15,CD215
Description	Recombinant human IL15(N120D) protein with C-terminal human Fc tag and human IL15RA protein
Delivery	In Stock
Uniprot ID	Q13261 and P40933
Expression Host	HEK293
Tag	C-Human Fc tag and tag Free
Molecular Characterization	IL15(Asn49-Ser162,N120D) hFc(Glu99-Ala330) IL15RA(Ile31-Arg95)
Molecular Weight	The protein has a predicted molecular mass of 38.9kDa and 7.3kDa kDa after removal of the signal peptide.
Purity	The purity of the protein is greater than 95% as determined by SDS-PAGE and Coomassie blue staining.
Formulation & Reconstitution	Lyophilized from sterile PBS, pH 7.4. Normally 5 % - 8% trehalose is added as protectants before lyophilization. Please see Certificate of Analysis for specific instructions of reconstitution.
Storage&Shipping	Store at -20°C to -80°C for 12 months in lyophilized form. After reconstitution, if not intended for use within a month, aliquot and store at -80°C (Avoid repeated freezing and thawing). Lyophilized proteins are shipped at ambient temperature.
Background	Interleukin-15 is a member of the four α helix bundle family of cytokines. It plays a multifaceted role in the development and control of the immune system. The IL-15R consists of three polypeptides, the type-specific IL-15R α , the IL-2/IL-15R β , and the common γ -chain (γ C), which is shared by multiple cytokine receptors. IL-15 could enhance the effect of chemotherapeutic agents and ACT on transplanted tumors, but had little or no effect when administered alone. The result of research shows that the biological activity of IL-15 could be increased ~50-fold by administering preformed complexes of IL-15 and its soluble receptor, IL-15R α .
Usage	Research use only
Conjugate	Unconjugated



Human IL15RA & IL15, hFc Tagged (N120D) Protein ELISA

0.2 µg of Human IL15RA & IL15, hFc tagged protein per well

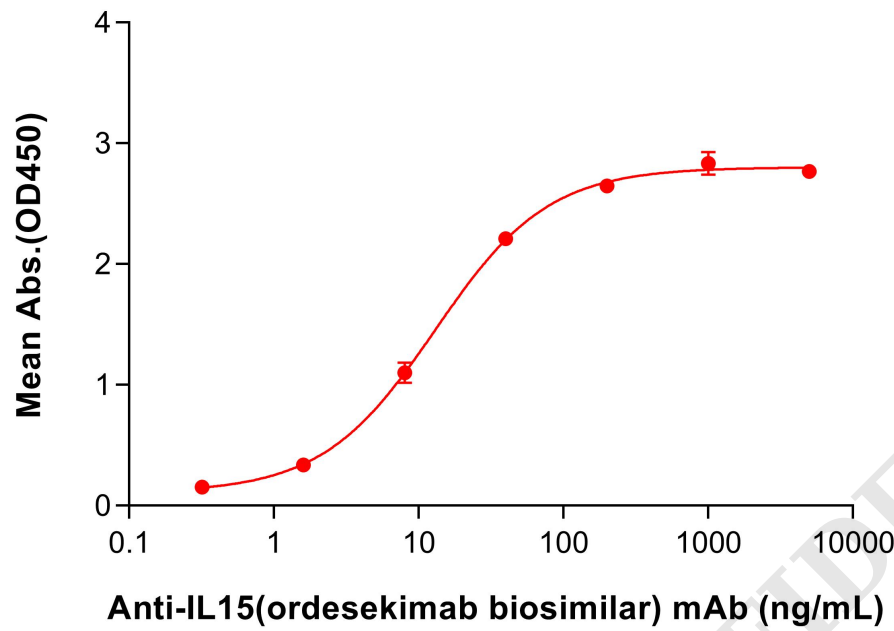


Figure 1. ELISA plate pre-coated by 2 µg/mL (100 µL/well) Human IL15RA & IL15 Protein, hFc Tag (N120D) (PME101891) can bind Anti-IL15(ordesekimab biosimilar) mAb (BME100253) in a linear range of 1.6-8 ng/mL. In order to specifically detect BME100253, mouse anti-human Fab-specific antibody was used as detection antibody.

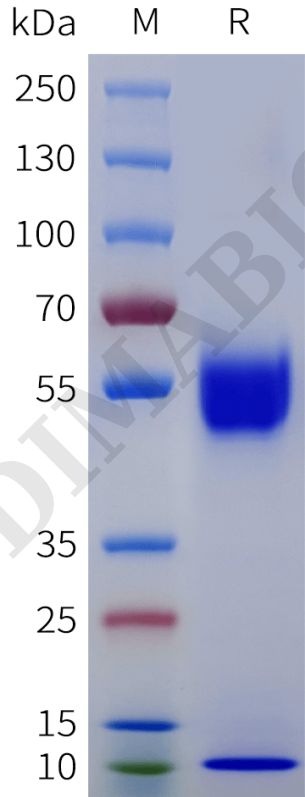


Figure 1. Human IL15(N120D) protein with C-terminal human Fc tag and human IL15RA protein on SDS-PAGE under reducing condition.



Human IL15RA & IL15, hFc Tagged (N120D) Protein ELISA

0.2 µg of Human IL15RA & IL15, hFc tagged protein per well

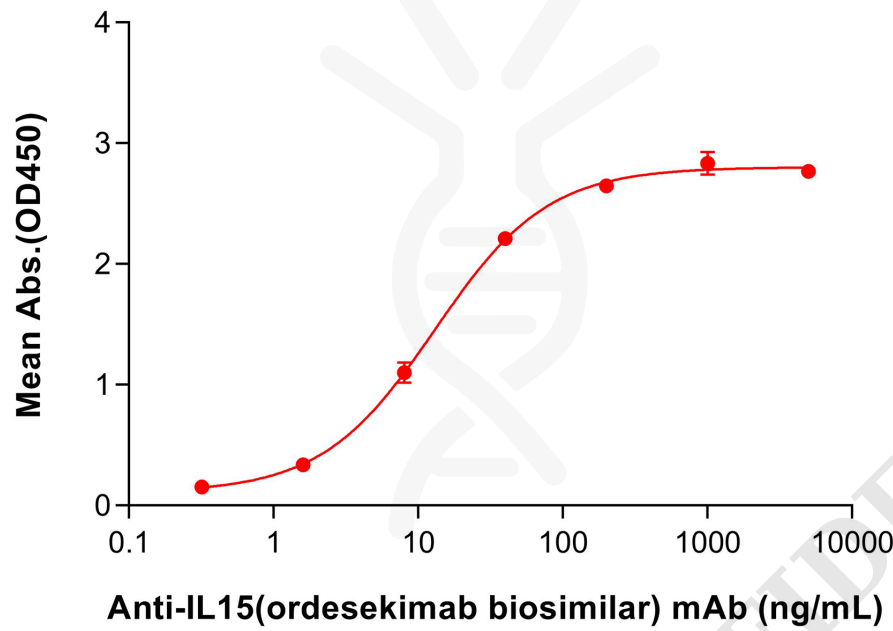


Figure 2. ELISA plate pre-coated by 2 µg/mL (100 µL/well) Human IL15RA and IL15 Protein, hFc Tag (N120D) (PME101891) can bind Anti-IL15(ordezekimab biosimilar) mAb (BME100253) in a linear range of 1.6–8 ng/mL. In order to specifically detect BME100253, mouse anti-human Fab-specific antibody was used as detection antibody.

