

PRODUCT INFORMATION

|                              |   |
|------------------------------|---|
| Target                       | IL1RA   |
| Synonyms                     | P80; IL1R; CRMO3; IL1R1; CD121A; D2S1473; IL-1RT1; IL-1R-alpha  |
| Description                  | Recombinant human IL1RA Protein with C-terminal mouse Fc tag  |
| Delivery                     | In Stock  |
| Uniprot ID                   | P14778  |
| Expression Host              | HEK293  |
| Tag                          | C-mouse Fc tag  |
| Molecular Characterization   | IL1RA(Leu18-Thr332) mFc(Pro99-Lys330)   |
| Molecular Weight             | The protein has a predicted molecular mass of 62.4 kDa after removal of the signal peptide. The apparent molecular mass of IL1RA-mFc is approximately 70-100 kDa due to glycosylation.  |
| Purity                       | The purity of the protein is greater than 95% as determined by SDS-PAGE and Coomassie blue staining.  |
| Formulation & Reconstitution | Lyophilized from sterile PBS, pH 7.4. Normally 5 % - 8% trehalose is added as protectants before lyophilization. Please see Certificate of Analysis for specific instructions of reconstitution.  |
| Storage & Shipping           | Store at -20°C to -80°C for 12 months in lyophilized form. After reconstitution, if not intended for use within a month, aliquot and store at -80°C (Avoid repeated freezing and thawing). Lyophilized proteins are shipped at ambient temperature.   |
| Background                   | This gene encodes a cytokine receptor that belongs to the interleukin-1 receptor family. The encoded protein is a receptor for interleukin-1 alpha, interleukin-1 beta, and interleukin-1 receptor antagonist. It is an important mediator involved in many cytokine-induced immune and inflammatory responses. This gene is located in a cluster of related cytokine receptor genes on chromosome 2q12. [provided by RefSeq, Dec 2013] |
| Usage                        | Research use only   |
| Conjugate                    | Unconjugated  |



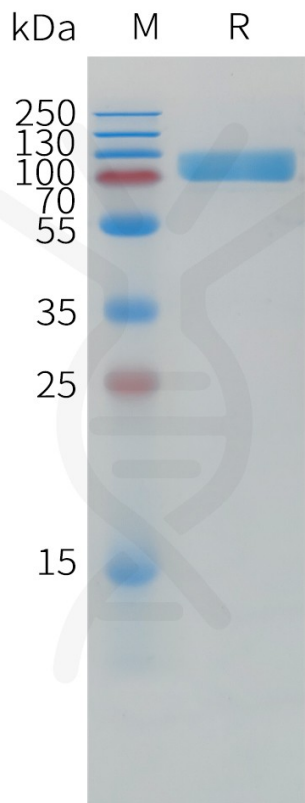


Figure 1. Human IL1RA Protein, mFc Tag on SDS-PAGE under reducing condition.

**Human IL1RA, mFc Tagged protein ELISA**

0.2 µg of Human IL1B, hFc tagged protein per well

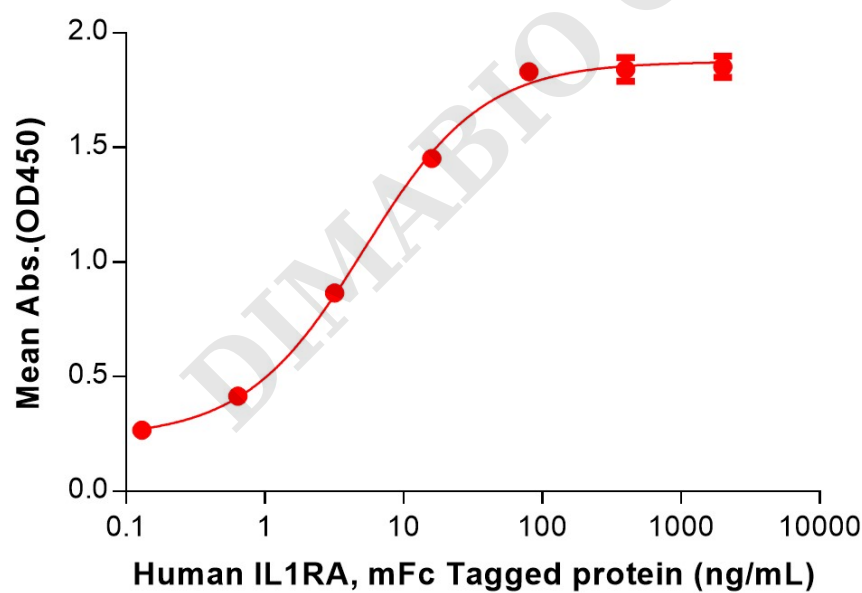


Figure 2. ELISA plate pre-coated by 2 µg/mL (100 µL/well) Human IL1B Protein, hFc Tag (PME100838) can bind Human IL1RA Protein, mFc Tag (PME101500) in a linear range of 0.64-80 ng/mL.

