

PRODUCT INFORMATION

Target	IL22RA1
Synonyms	IL22R; CRF2-9; IL22R1
Description	Recombinant human IL22RA1 Protein with C-terminal human Fc tag
Delivery	In Stock
Uniprot ID	Q8N6P7
Expression Host	HEK293
Tag	C-Human Fc tag
Molecular Characterization	IL22RA1(His16-Thr228) hFc(Glu99-Ala330)
Molecular Weight	The protein has a predicted molecular mass of 50.5 kDa after removal of the signal peptide.
Purity	The purity of the protein is greater than 95% as determined by SDS-PAGE and Coomassie blue staining.
Formulation & Reconstitution	Lyophilized from sterile PBS, pH 7.4. Normally 5 % - 8% trehalose is added as protectants before lyophilization. Please see Certificate of Analysis for specific instructions of reconstitution.
Storage&Shipping	Store at -20°C to -80°C for 12 months in lyophilized form. After reconstitution, if not intended for use within a month, aliquot and store at -80°C (Avoid repeated freezing and thawing). Lyophilized proteins are shipped at ambient temperature.
Background	The protein encoded by this gene belongs to the class II cytokine receptor family, and has been shown to be a receptor for interleukin 22 (IL22). IL22 receptor is a protein complex that consists of this protein and interleukin 10 receptor, beta (IL10BR/CRFB4), a subunit also shared by the receptor complex for interleukin 10 (IL10). This gene and interleukin 28 receptor, alpha (IL28RA) form a cytokine receptor gene cluster in the chromosomal region 1p36. [provided by RefSeq, Jul 2008]
Usage	Research use only
Conjugate	Unconjugated



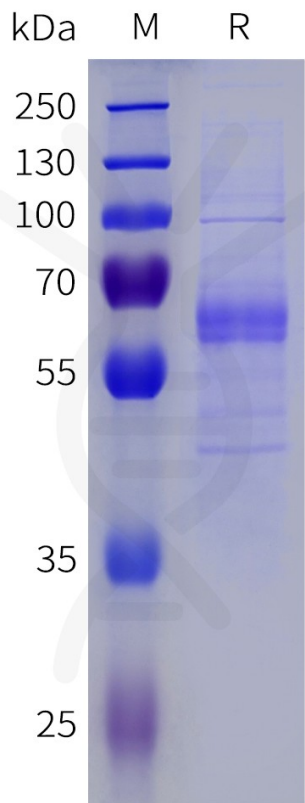


Figure 1. Human IL22RA1 Protein, hFc Tag on SDS-PAGE under reducing condition.

Human IL22RA1, hFc Tagged protein ELISA

0.2 μ g of Human IL22RA1, hFc tagged protein per well

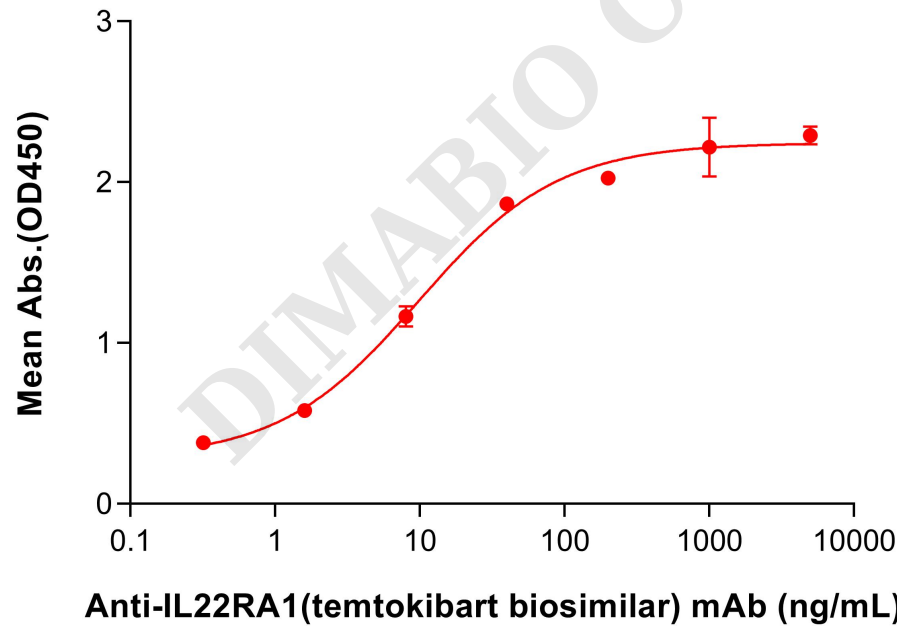


Figure 2. ELISA plate pre-coated by 2 μ g/mL (100 μ L/well) Human IL22RA1 Protein, hFc Tag (PME101824) can bind Anti-IL22RA1(temtokibart biosimilar) mAb (BME100764) in a linear range of 1.6-8 ng/mL, mouse anti-human Fab-specific antibody was used as detection antibody.

