

PRODUCT INFORMATION

Target	IL31
Synonyms	IL-31
Description	Recombinant human IL31 Protein with C-terminal 10×His tag
Delivery	In Stock
Uniprot ID	Q6EBC2
Expression Host	HEK293
Tag	C-10×His tag
Molecular Characterization	IL31(Ser24-Thr164) 10×His tag
Molecular Weight	The protein has a predicted molecular mass of 17.2 kDa after removal of the signal peptide.
Purity	The purity of the protein is greater than 85% as determined by SDS-PAGE and Coomassie blue staining.
Formulation & Reconstitution	Lyophilized from sterile PBS, pH 7.4. Normally 5 % - 8% trehalose is added as protectants before lyophilization. Please see Certificate of Analysis for specific instructions of reconstitution.
Storage&Shipping	Store at -20°C to -80°C for 12 months in lyophilized form. After reconstitution, if not intended for use within a month, aliquot and store at -80°C (Avoid repeated freezing and thawing). Lyophilized proteins are shipped at ambient temperature.
Sterility	Products are supplied non-sterile. For cell culture applications, dilute in appropriate medium and sterile-filter (0.22 µm) prior to use.
Background	IL31, which is made principally by activated Th2-type T cells, interacts with a heterodimeric receptor consisting of IL31RA (MIM 609510) and OSMR (MIM 601743) that is constitutively expressed on epithelial cells and keratinocytes. IL31 may be involved in the promotion of allergic skin disorders and in regulating other allergic diseases, such as asthma (Dillon et al., 2004 [PubMed 15184896]).[supplied by OMIM, Mar 2008]
Usage	Research use only
Conjugate	Unconjugated



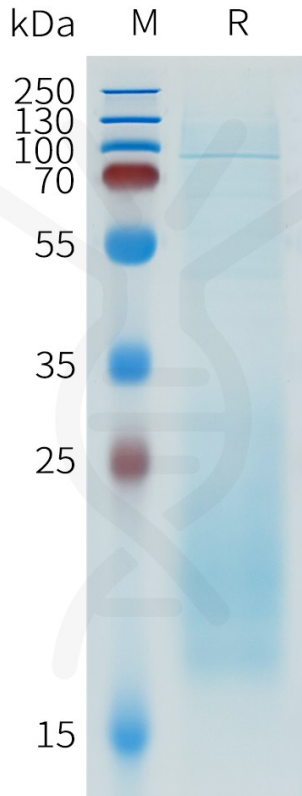


Figure 1. Human IL31 Protein, His Tag on SDS-PAGE under reducing condition.

Human IL31, His Tagged protein ELISA

0.2 μ g of Human IL31, His tagged protein per well

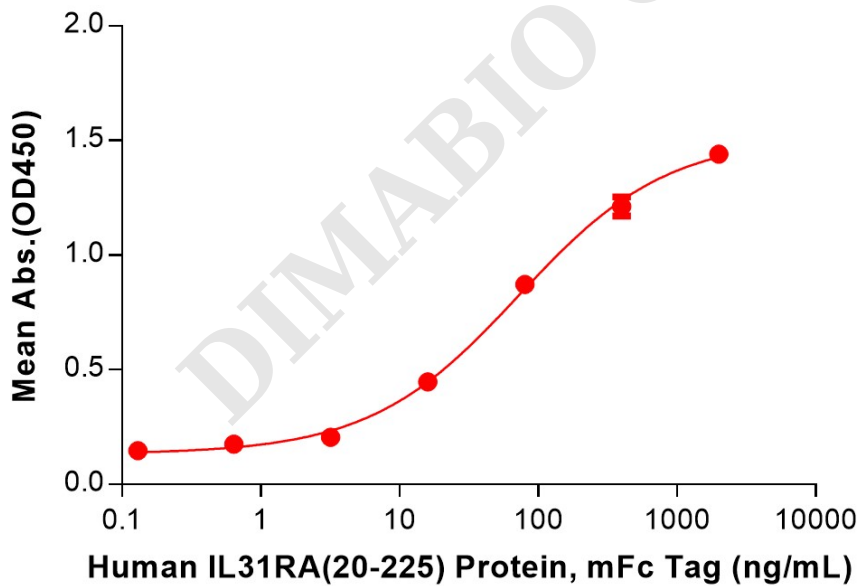
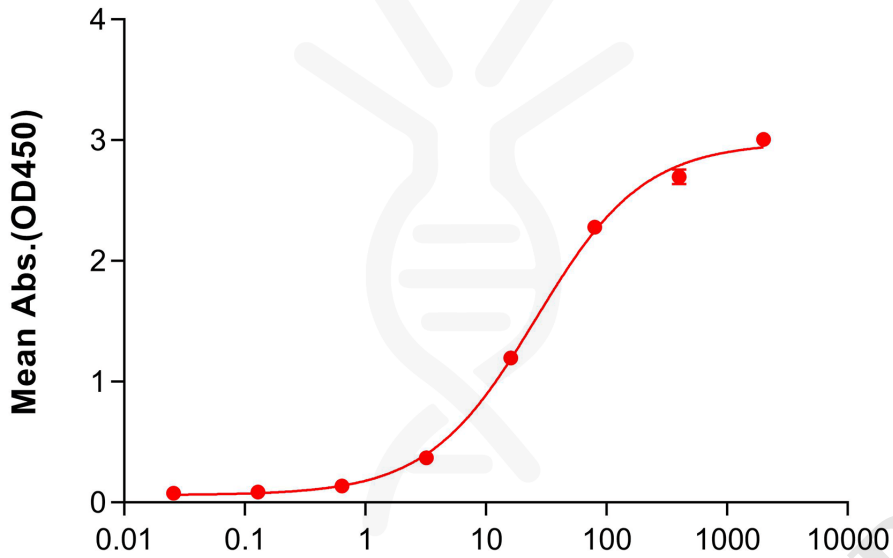


Figure 2. ELISA plate pre-coated by 2 μ g/mL (100 μ L/well) Human IL31 Protein, His Tag (PME101593) can bind Human IL31RA(20-225) Protein, mFc Tag (PME101700) in a linear range of 3.20-400 ng/mL.



Human IL31, His tagged protein ELISA

1 μ g of Human IL31, His tagged protein per well



Anti-IL31 antibody(1A12), IgG1 Chimeric mAb (ng/mL)

Figure 3. ELISA plate pre-coated by 1 μ g/mL (100 μ L/well) Human IL31 Protein, His Tag (PME101593) can bind Anti-IL31 antibody(1A12), IgG1 Chimeric mAb (DMC101687) in a linear range of 16-80 ng/mL.

