

PRODUCT INFORMATION

| | |
|---|---|
| Target | IL31RA |
| Synonyms | CRL; GPL; CRL3; GLMR; GLM-R; PLCA2; hGLM-R; IL-31RA; PRO21384; zcytoR17 |
| Description | Recombinant human IL31RA Protein with C-terminal mouse Fc tag |
| Delivery | In Stock |
| Uniprot ID | Q8NI17 |
| Expression Host | HEK293 |
| Tag | C-Mouse Fc tag |
| Molecular Characterization | IL31RA(Ala20-Glu519) mFc(Pro99-Lys330) |
| Molecular Weight | The protein has a predicted molecular mass of 83.3 kDa after removal of the signal peptide. The apparent molecular mass of IL31RA-mFc is approximately 100-250 kDa due to glycosylation. |
| Purity | The purity of the protein is greater than 95% as determined by SDS-PAGE and Coomassie blue staining. |
| Formulation & Reconstitution | Lyophilized from sterile PBS, pH 7.4. Normally 5 % - 8% trehalose is added as protectants before lyophilization. Please see Certificate of Analysis for specific instructions of reconstitution. |
| Storage&Shipping | Store at -20°C to -80°C for 12 months in lyophilized form. After reconstitution, if not intended for use within a month, aliquot and store at -80°C (Avoid repeated freezing and thawing). Lyophilized proteins are shipped at ambient temperature. |
| Background | The protein encoded by this gene belongs to the type I cytokine receptor family. This receptor, with homology to gp130, is expressed on monocytes, and is involved in IL-31 signaling via activation of STAT-3 and STAT-5. It functions either as a monomer, or as part of a receptor complex with oncostatin M receptor (OSMR). Several alternatively spliced transcript variants encoding different isoforms have been noted for this gene.[provided by RefSeq, Jun 2011] |
| Usage | Research use only |
| Conjugate | Unconjugated |



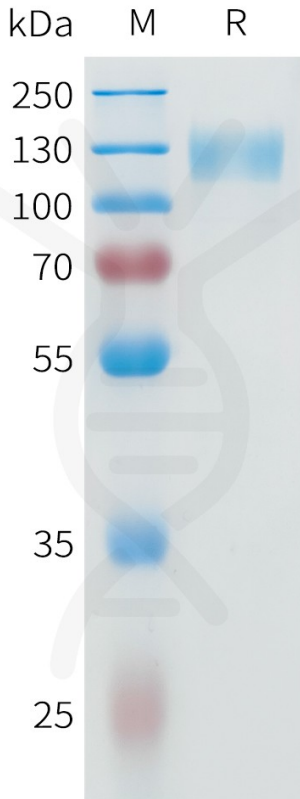


Figure 1. Human IL31RA Protein, mFc Tag on SDS-PAGE under reducing condition.

Human IL31RA Protein, mFc Tag ELISA

0.2 μ g of Human IL31, hFc tagged protein per well

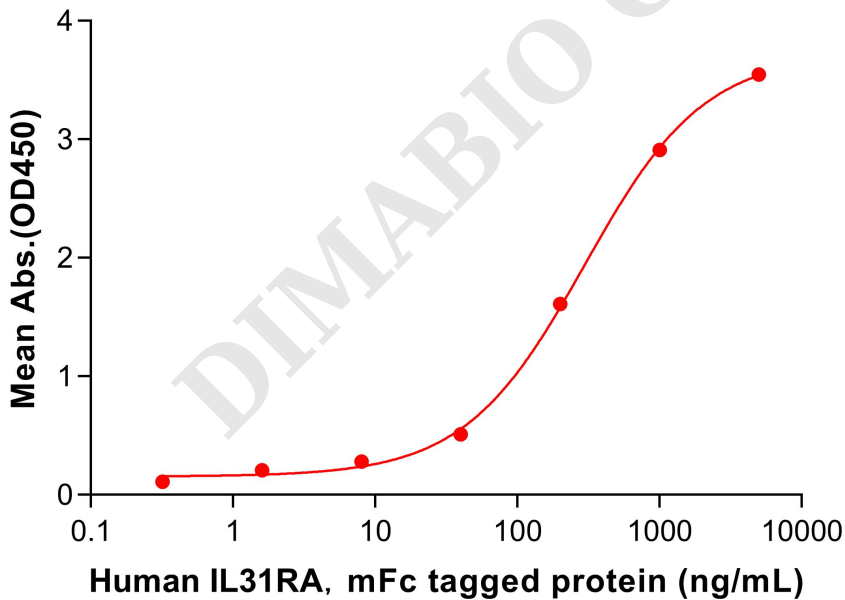


Figure 2. ELISA plate pre-coated by 2 μ g/mL (100 μ L/well) Human IL31 Protein, hFc Tag (PME100739) can bind Human IL31RA Protein, mFc Tag (PME101598) in a linear range of 200-1000 ng/mL.

