

## PRODUCT INFORMATION

<b>Target</b>	IL31RA
<b>Synonyms</b>	CRL; GPL; CRL3; GLMR; GLM-R; PLCA2; hGLM-R; IL-31RA; PRO21384; zcytoR17
<b>Description</b>	Recombinant human IL31RA(20-225) Protein with C-terminal human Fc tag
<b>Delivery</b>	In Stock
<b>Uniprot ID</b>	Q8NI17
<b>Expression Host</b>	HEK293
<b>Tag</b>	C-Human Fc tag
<b>Molecular Characterization</b>	IL31RA(Ala20-Glu225) hFc(Glu99-Ala330)
<b>Molecular Weight</b>	The protein has a predicted molecular mass of 50.1 kDa after removal of the signal peptide. The apparent molecular mass of IL31RA(20-225)-hFc is approximately 55-100 kDa due to glycosylation.
<b>Purity</b>	The purity of the protein is greater than 90% as determined by SDS-PAGE and Coomassie blue staining.
<b>Formulation &amp; Reconstitution</b>	Lyophilized from sterile PBS, pH 7.4. Normally 5 % - 8% trehalose is added as protectants before lyophilization. Please see Certificate of Analysis for specific instructions of reconstitution.
<b>Storage&amp;Shipping</b>	Store at -20°C to -80°C for 12 months in lyophilized form. After reconstitution, if not intended for use within a month, aliquot and store at -80°C (Avoid repeated freezing and thawing). Lyophilized proteins are shipped at ambient temperature.
<b>Sterility</b>	Products are supplied non-sterile. For cell culture applications, dilute in appropriate medium and sterile-filter (0.22 µm) prior to use.
<b>Background</b>	The protein encoded by this gene belongs to the type I cytokine receptor family. This receptor, with homology to gp130, is expressed on monocytes, and is involved in IL-31 signaling via activation of STAT-3 and STAT-5. It functions either as a monomer, or as part of a receptor complex with oncostatin M receptor (OSMR). Several alternatively spliced transcript variants encoding different isoforms have been noted for this gene.[provided by RefSeq, Jun 2011]
<b>Usage</b>	Research use only
<b>Conjugate</b>	Unconjugated



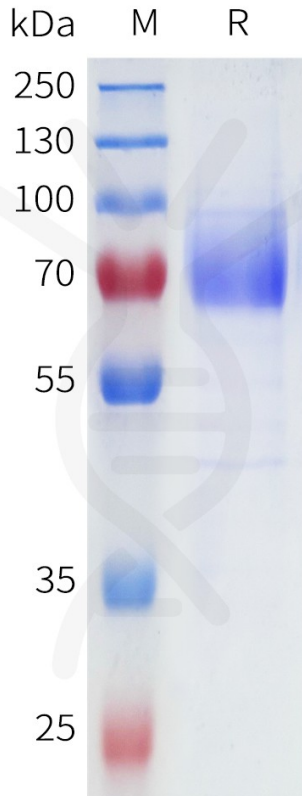


Figure 1. Human IL31RA(20-225) Protein, hFc Tag on SDS-PAGE under reducing condition.

### Human IL31RA(20-225), hFc Tagged protein ELISA

0.2  $\mu$ g of Human IL31RA(20-225), hFc tagged protein per well

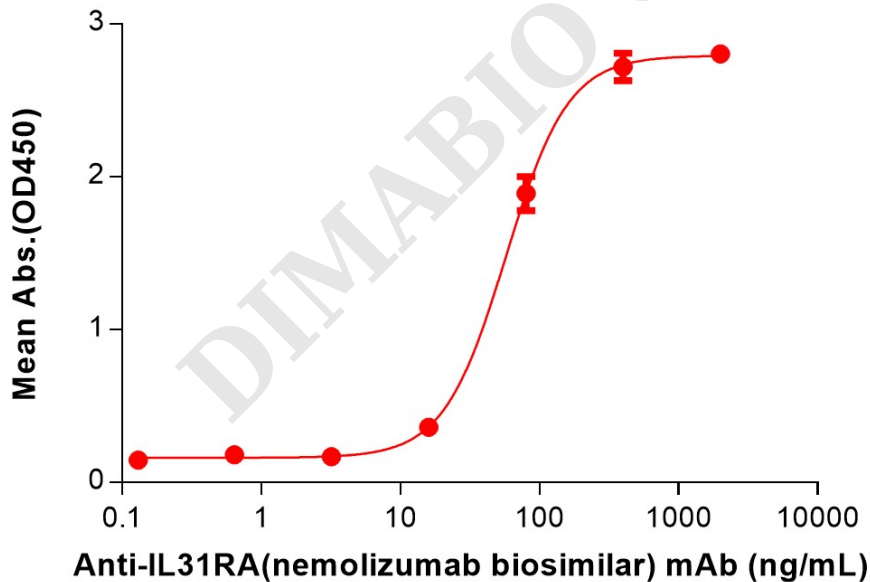


Figure 2. ELISA plate pre-coated by 2  $\mu$ g/mL (100  $\mu$ L/well) Human IL31RA(20-225) Protein, hFc Tag (PME101699) can bind Anti-IL31RA(nemolizumab biosimilar) mAb (BME100231) in a linear range of 3.20–400 ng/mL.

