

PRODUCT INFORMATION

Target	IL5RA
Synonyms	IL5Ra;CD125;IL-5 R alpha
Description	Recombinant human L5RA protein with C-terminal 6×His tag
Delivery	In Stock
Uniprot ID	Q01344
Expression Host	HEK293
Tag	C-6×His Tag
Molecular Characterization	IL5RA(Asp21-Pro338) 6×His tag
Molecular Weight	The protein has a predicted molecular mass of 37.0 kDa after removal of the signal peptide.The apparent molecular mass of IL5RA-His is approximately 50-55 kDa due to glycosylation.
Purity	The purity of the protein is greater than 90% as determined by SDS-PAGE and Coomassie blue staining.
Formulation & Reconstitution	Lyophilized from sterile PBS, pH 7.4. Normally 5 % - 8% trehalose is added as protectants before lyophilization. Please see Certificate of Analysis for specific instructions of reconstitution.
Storage&Shipping	Store at -20°C to -80°C for 12 months in lyophilized form. After reconstitution, if not intended for use within a month, aliquot and store at -80°C (Avoid repeated freezing and thawing). Lyophilized proteins are shipped at ambient temperature.
Background	The protein encoded by this gene is an interleukin 5 specific subunit of a heterodimeric cytokine receptor. The receptor is comprised of a ligand specific alpha subunit and a signal transducing beta subunit shared by the receptors for interleukin 3 (IL3), colony stimulating factor 2 (CSF2/GM-CSF), and interleukin 5 (IL5). The binding of this protein to IL5 depends on the beta subunit. The beta subunit is activated by the ligand binding, and is required for the biological activities of IL5. This protein has been found to interact with syndecan binding protein (syntenin), which is required for IL5 mediated activation of the transcription factor SOX4. Several alternatively spliced transcript variants encoding four distinct isoforms have been reported.
Usage	Research use only
Conjugate	Unconjugated



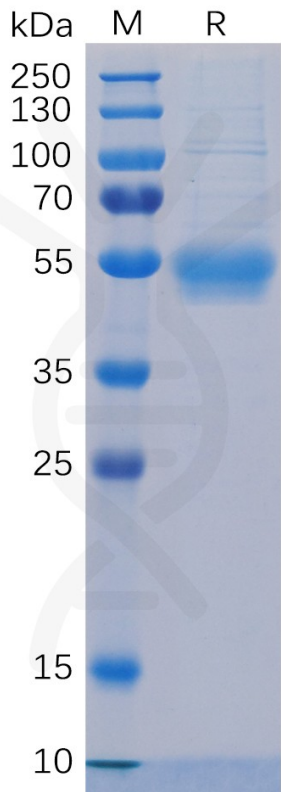


Figure 1. Human IL5RA Protein, His Tag on SDS-PAGE under reducing condition.

Human IL5RA, His Tagged protein ELISA
0.2 μ g of Human IL5RA, His tagged protein per well

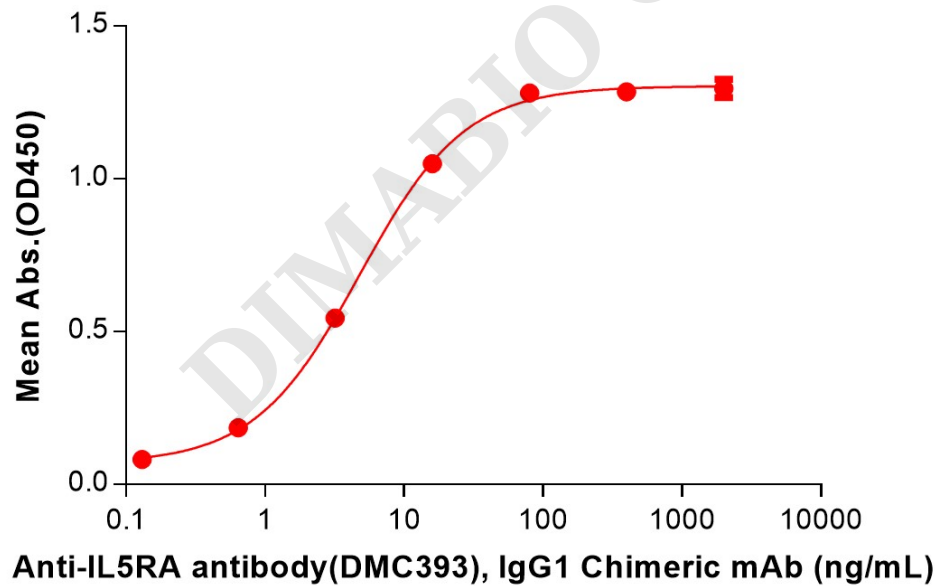


Figure 2. ELISA plate pre-coated by 2 μ g/mL (100 μ L/well) Human IL5RA Protein, His Tag (PME100093) can bind Anti-IL5RA antibody(DMC393), IgG1 Chimeric mAb in a linear range of 0.64-16 ng/mL.



Human IL5RA, His Tagged protein ELISA
0.2 μ g of Human IL5RA, His tagged protein per well

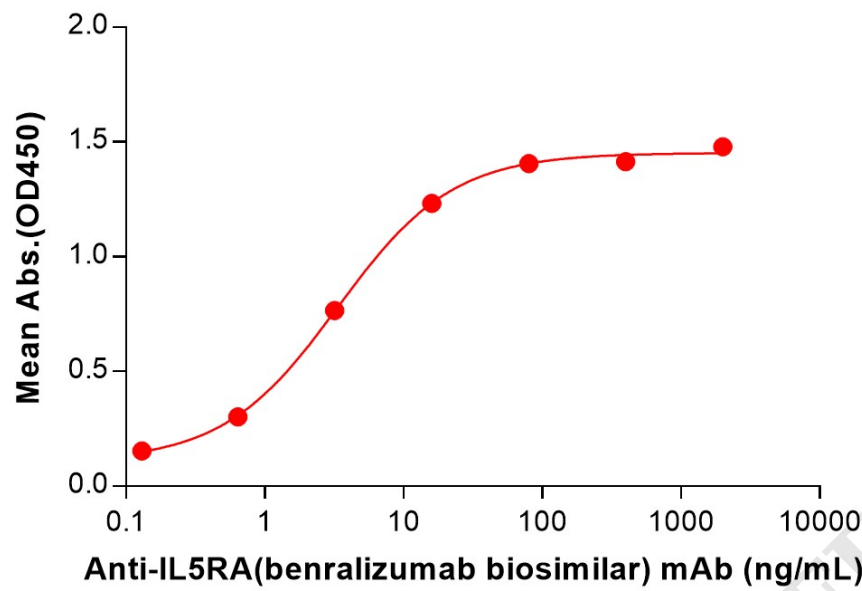


Figure 3. ELISA plate pre-coated by 2 μ g/mL (100 μ L/well) Human IL5RA Protein, His Tag (PME100093) can bind Anti-IL5RA(benralizumab biosimilar) mAb (BME100221) in a linear range of 0.13–16 ng/mL.

