

PRODUCT INFORMATION

Target	IL7RA
Synonyms	CD127;CDW127;IL-7R-alpha;IL7RA;ILRA
Description	Recombinant Human IL7RA with C-terminal human Fc tag
Delivery	In Stock
Uniprot ID	P16871
Expression Host	HEK293
Tag	C-Human Fc Tag
Molecular Characterization	IL7RA(Glu21-Gly236) hFc(Glu99-Ala330)
Molecular Weight	The protein has a predicted molecular mass of 51.0 kDa after removal of the signal peptide. The apparent molecular mass of IL7RA-hFc is approximately 55-100 kDa due to glycosylation.
Purity	The purity of the protein is greater than 95% as determined by SDS-PAGE and Coomassie blue staining.
Formulation & Reconstitution	Lyophilized from sterile PBS, pH 7.4. Normally 5 % - 8% trehalose is added as protectants before lyophilization. Please see Certificate of Analysis for specific instructions of reconstitution.
Storage & Shipping	Store at -20°C to -80°C for 12 months in lyophilized form. After reconstitution, if not intended for use within a month, aliquot and store at -80°C (Avoid repeated freezing and thawing). Lyophilized proteins are shipped at ambient temperature.
Background	The protein encoded by this gene is a receptor for interleukin 7 (IL7). The function of this receptor requires the interleukin 2 receptor, gamma chain (IL2RG), which is a common gamma chain shared by the receptors of various cytokines, including interleukins 2, 4, 7, 9, and 15. This protein has been shown to play a critical role in V(D)J recombination during lymphocyte development. Defects in this gene may be associated with severe combined immunodeficiency (SCID). Alternatively spliced transcript variants have been found. [provided by RefSeq, Dec 2015]
Usage	Research use only
Conjugate	Unconjugated



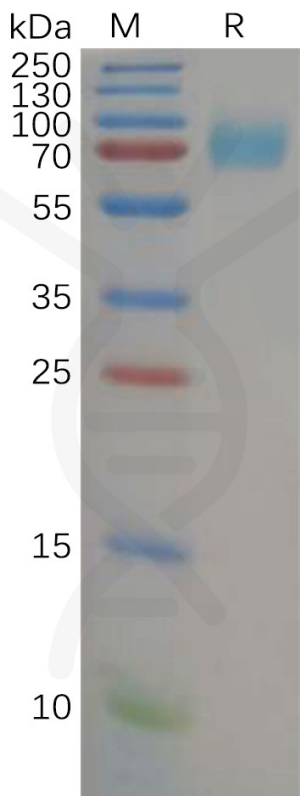


Figure 1. Human IL7RA Protein, hFc Tag on SDS-PAGE under reducing condition.

**Human IL7RA,hFc Tagged protein ELISA**  
0.2 µg of Human IL7RA, hFc tagged protein per well

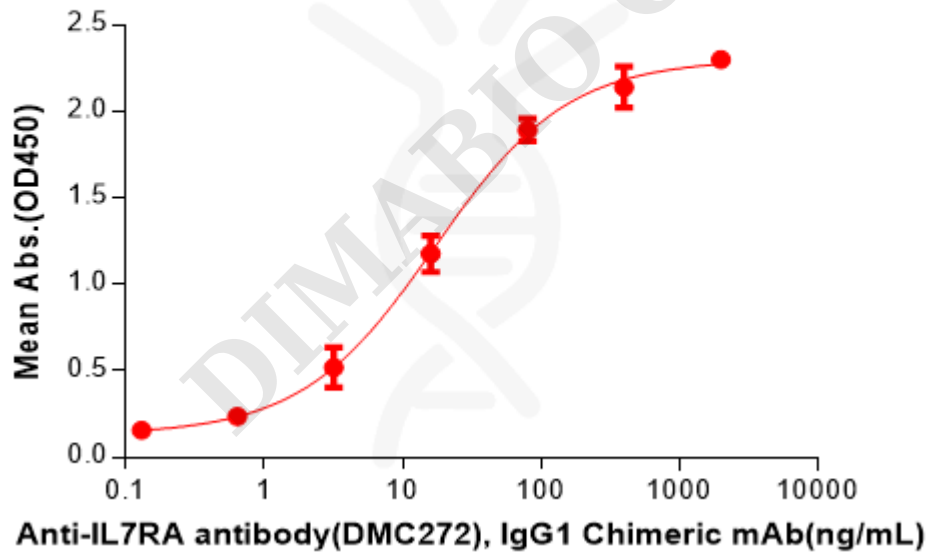


Figure 2. ELISA plate pre-coated by 2 µg/mL (100 µL/well) Human IL7RA Protein, hFc Tag(PME100840) can bind Anti-IL7RA antibody(DMC272), IgG1 Chimeric mAb in a linear range of 3.20-80 ng/mL.



**Human IL7RA, hFc Tagged protein ELISA**

0.2 µg of Human IL7RA, hFc tagged protein per well

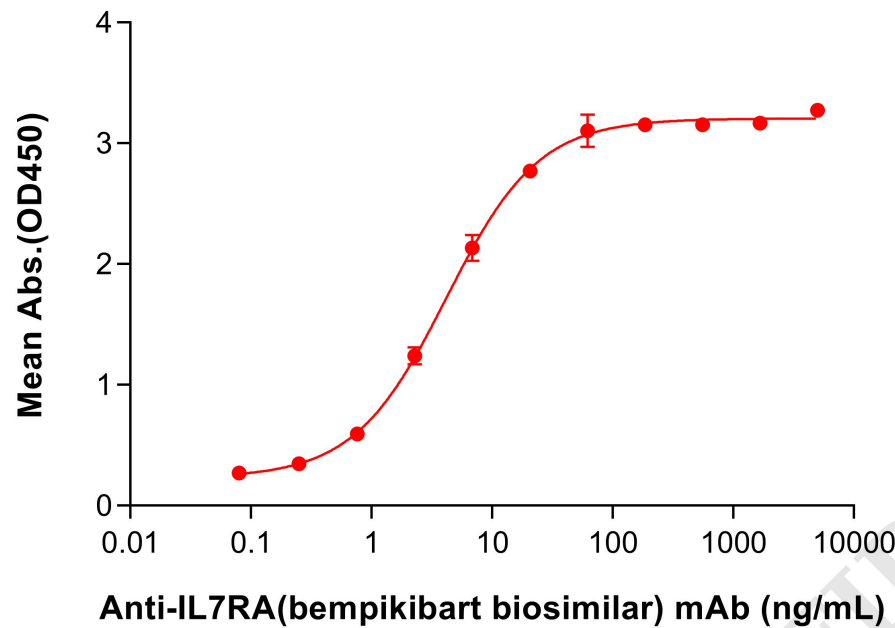


Figure 3. ELISA plate pre-coated by 2 µg/mL (100 µL/well) Human IL7RA Protein, hFc Tag (PME100840) can bind Anti-IL7RA(bempikibart biosimilar) mAb (BME100428) in a linear range of 0.76–20.58 ng/mL, mouse anti-human Fab-specific antibody was used as detection antibody.

